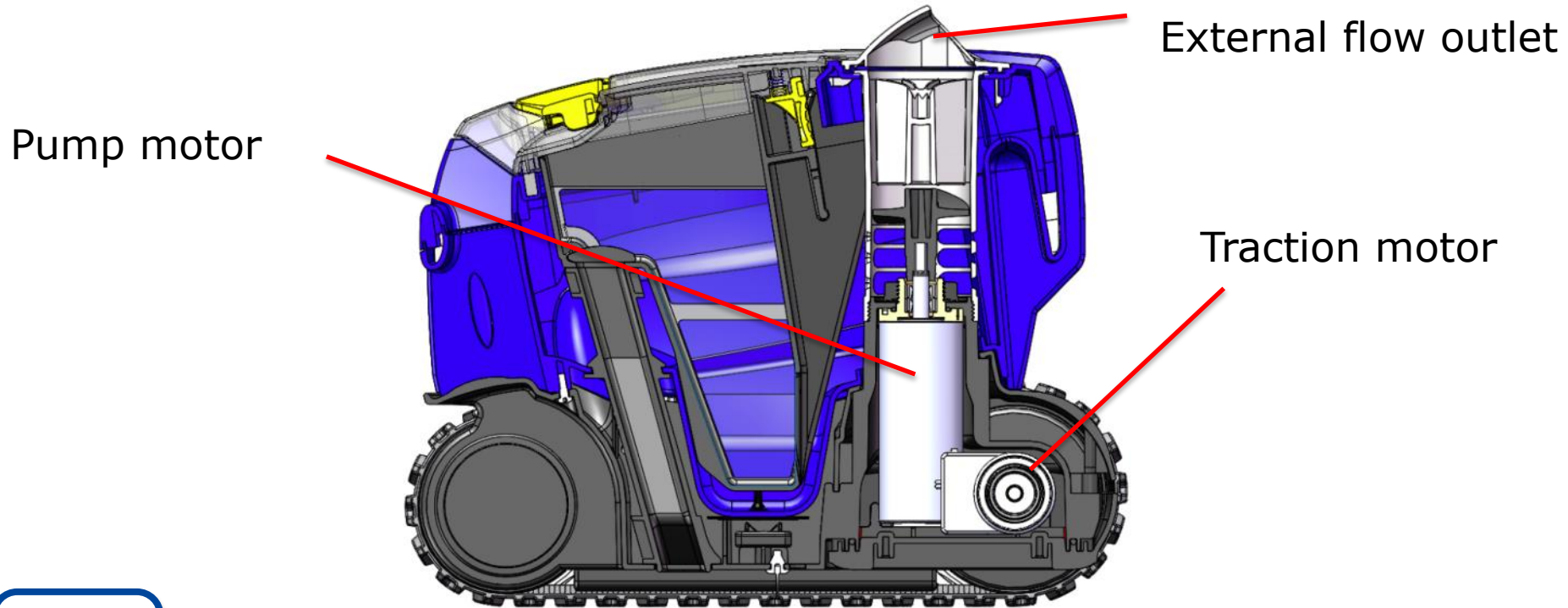






The platform

2 motors



A very light cleaner: 5.5 kg



The platform

Traction system

Notched tracks

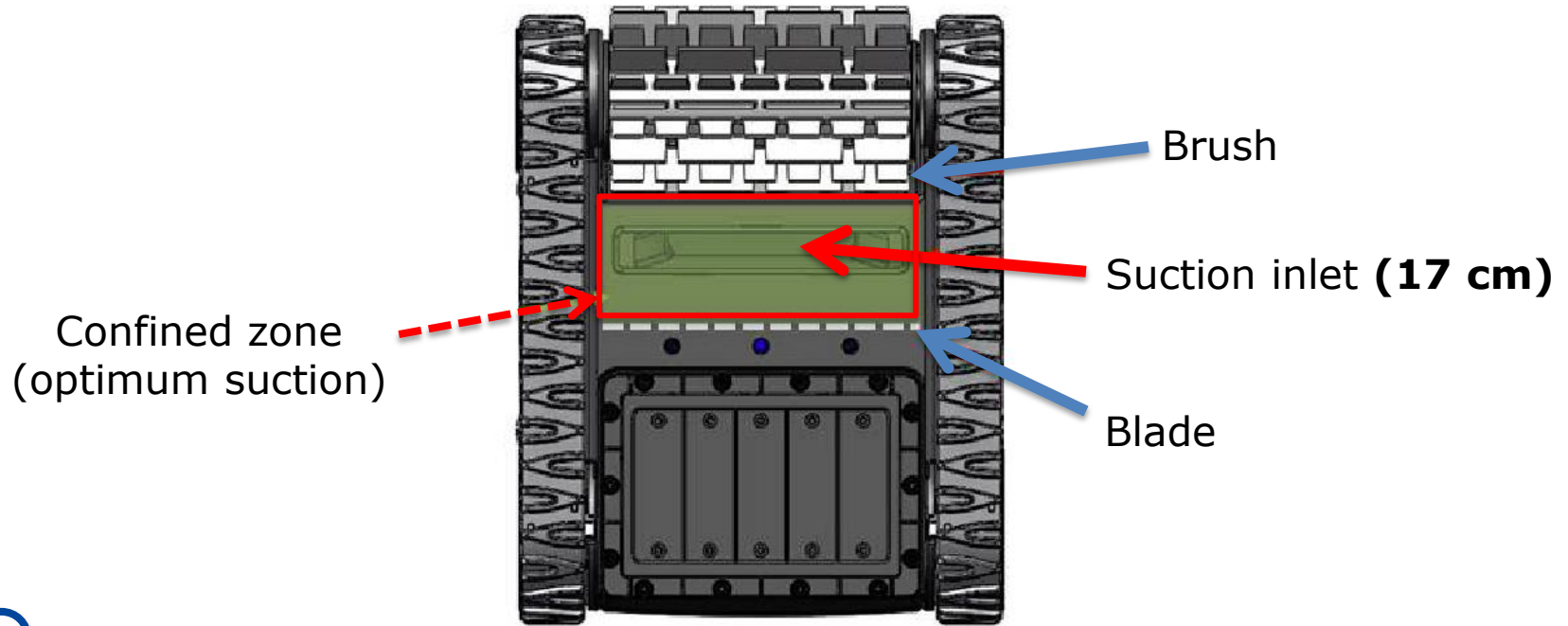


Agile movement



The platform

Suction inlet



Easy suction for all types of debris



The platform

Clear window (according to model)



Immediate view
of the filter



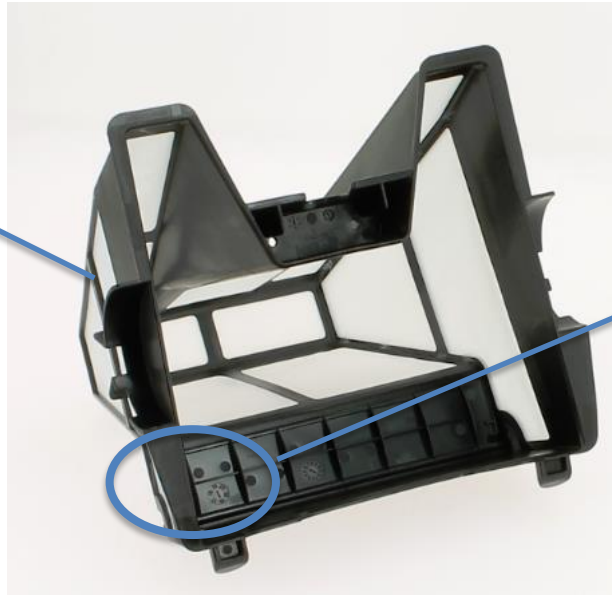
Check the filter condition quickly



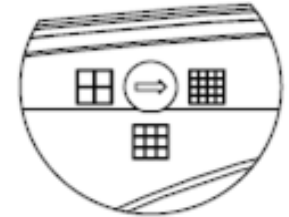
The platform

The filter

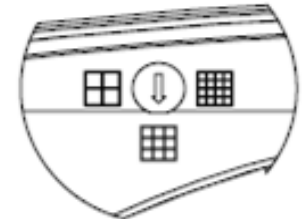
3L capacity



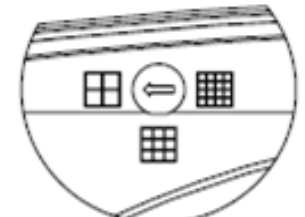
Filtration level marker



A0244702 VIEW



A0244700 VIEW



3 filtration levels available:

- Very fine: 60 μ (optional)
- Fine: 100 μ (supplied)
- Wide: 200 μ (optional)





The platform

The brush

Standard brush



PVA brush*



All coatings: Liner, PVC, reinforced PVC, painted concrete, polyester, tiles* etc.

*For pools with right angles between the bottom and the side, use a PVA brush kit



The platform

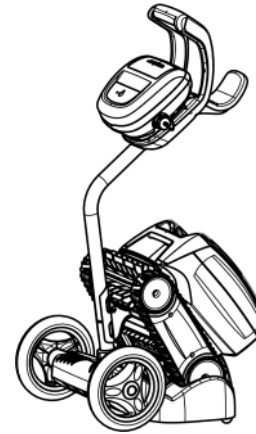
The base

The base



Unit protection

The carriage*



Cleaner drying

Cable storage

Cleaner transport

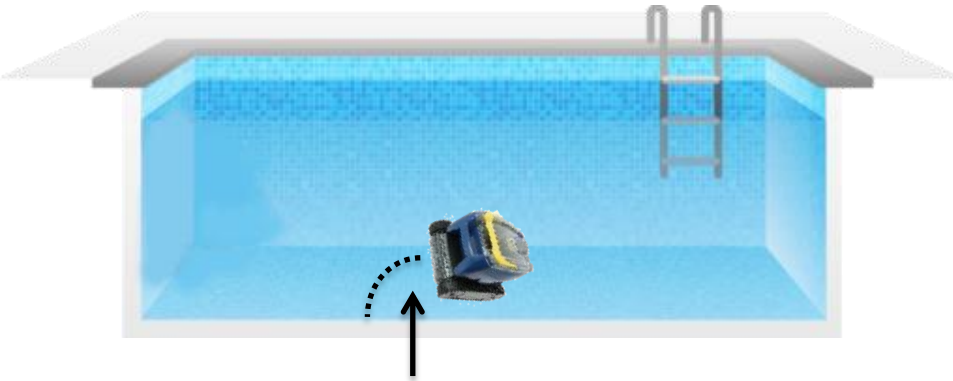


*Carriage available as an option



Behaviour

The cleaner rears up during certain FORWARD rotations



Depending on the pool's adhesiveness...

... the cleaner is likely to "rear up" from the bottom.

- "Normal" cleaner behaviour
- The more "grip" the surface has, the more the cleaner will "rear up"



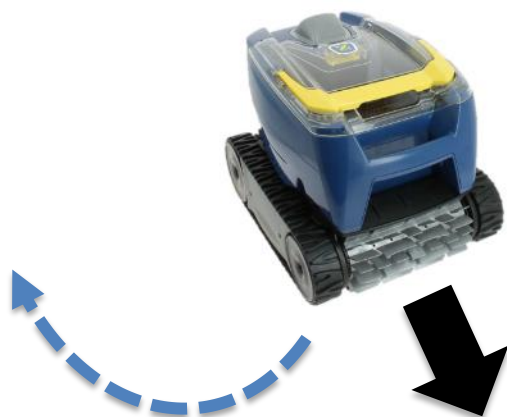
The cleaner has a safety mechanism in case it rears up excessively.



Behaviour

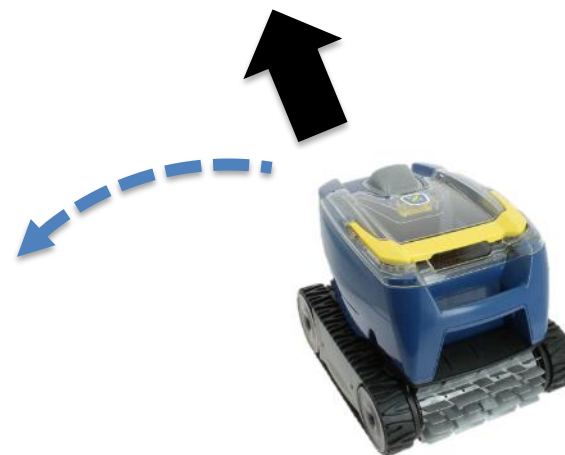
The cleaner turns around its cable

IN FORWARD MOVEMENT



Rotations to the right

IN REVERSE



Rotations to the left



- In this way the cleaner covers the whole pool
- As many right/left rotations to prevent the cable being tangled



Behaviour

Automatic safety features

① Timer system



The cleaner detects that it is out of the water and reverses to turn over in the water

→ **Autonomy**

② Out-of-water safety



On start-up the cleaner performs 3 tests to check whether it is in the water.

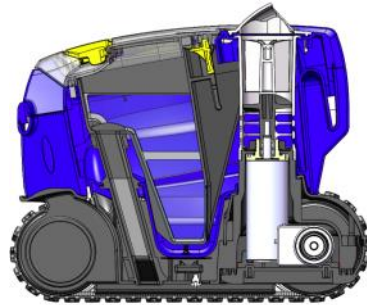
→ **Reliability**



Behaviour

Automatic safety features

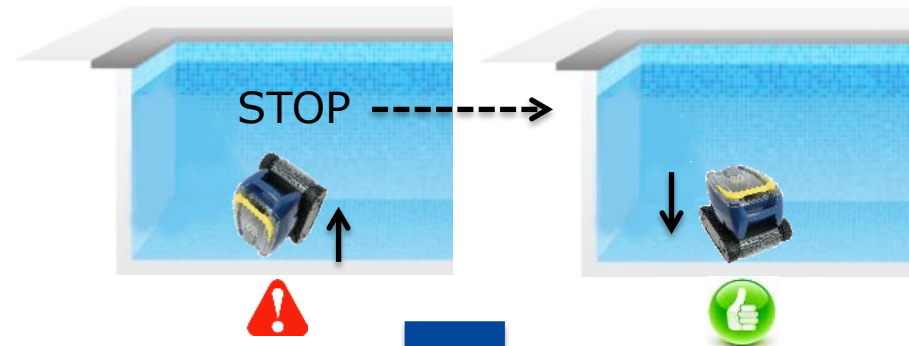
③ Electronic motor protection



The motor consumption is controlled

→ **Performance**

④ Rotation pick-up safety



The safety enables the cleaner to be placed flat on the bottom if the cleaner runs on the rear wheels (following a rotation)

→ **Performance**



Description

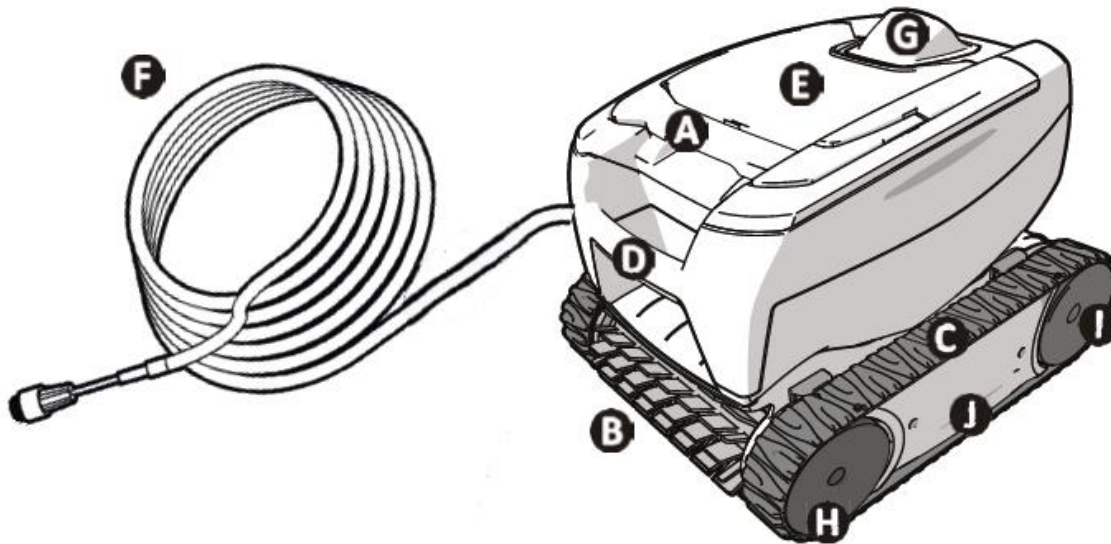
Technical specifications

	OT 2100 OT 2190 RT 2100	OT 3200 - OT 3230 - OT 3240 OT 3290 - RT 3200 - RT 3250 RT 3260 - RT 3270
Control box power supply voltage	100-240 VAC, 50/60 Hz	
Cleaner power supply voltage	30 VDC	
Max absorbed power	100 W	
Cable length	14 m (maximum 8 x 4 m)	16.5 m (maximum 10 x 5 m)
Cleaner dimensions (L x W x h)	37 x 29 x 30 cm	
Packaging dimensions (L x W x h)	56 x 37 x 38 cm	
Cleaner weight	5.5 kg	
Packaged weight	10.5 kg	
Theoretical cleaning width	17 cm	
Pump flow	10 m ³ /h	



Description

Marking

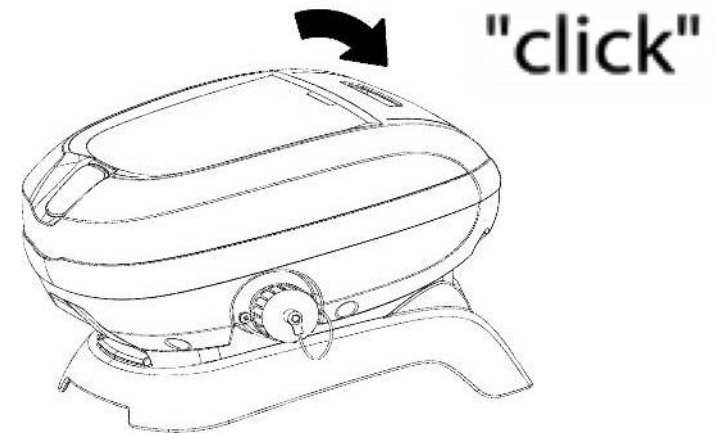


- A** Filter access handle
- B** Brush
- C** Tracks
- D** Transport handle
- E** Filter cover
- F** Floating cable
- G** Oriented flow guide
- H** Front wheels
- I** Rear wheels
- J** Cartridges



Installation

Attachment to the base

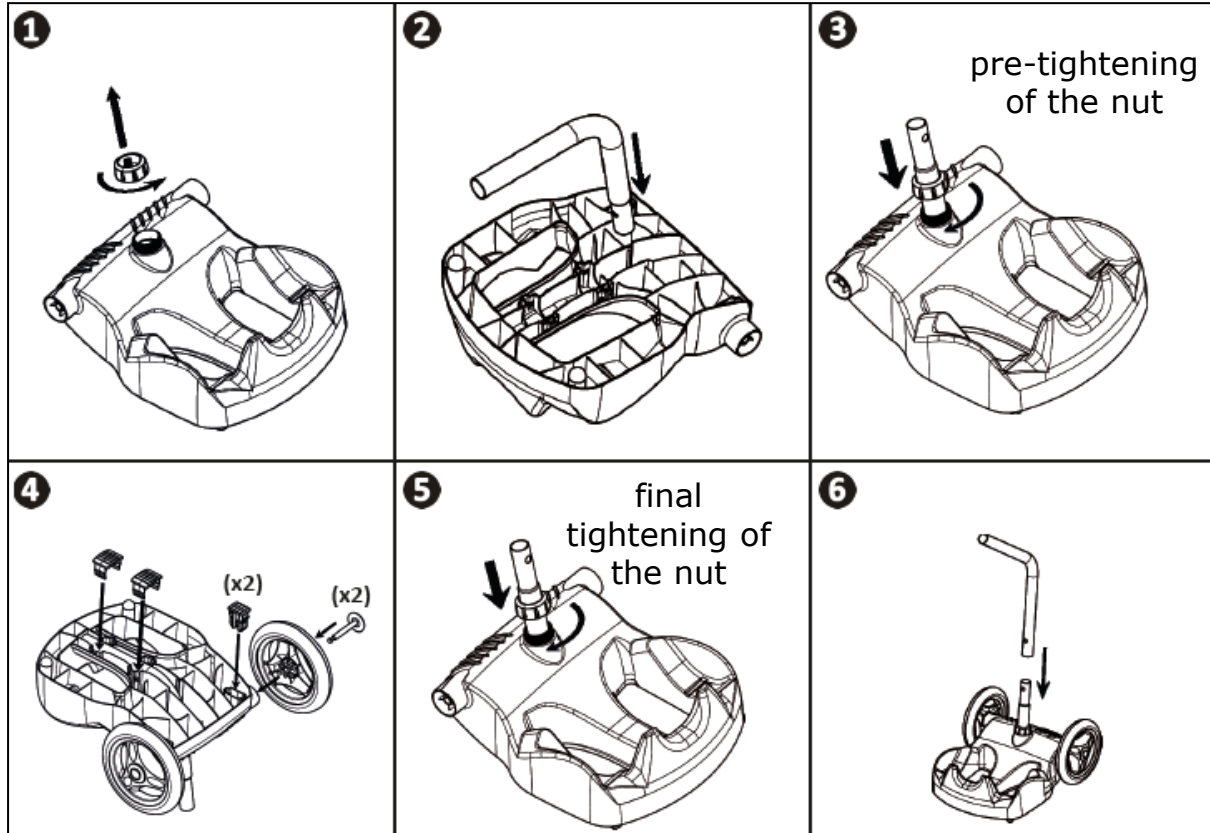


- Protects the command unit if the ground is flooded.
- Unit splash-proof but must not be immersed.



Installation

Mounting the carriage (available as an accessory)



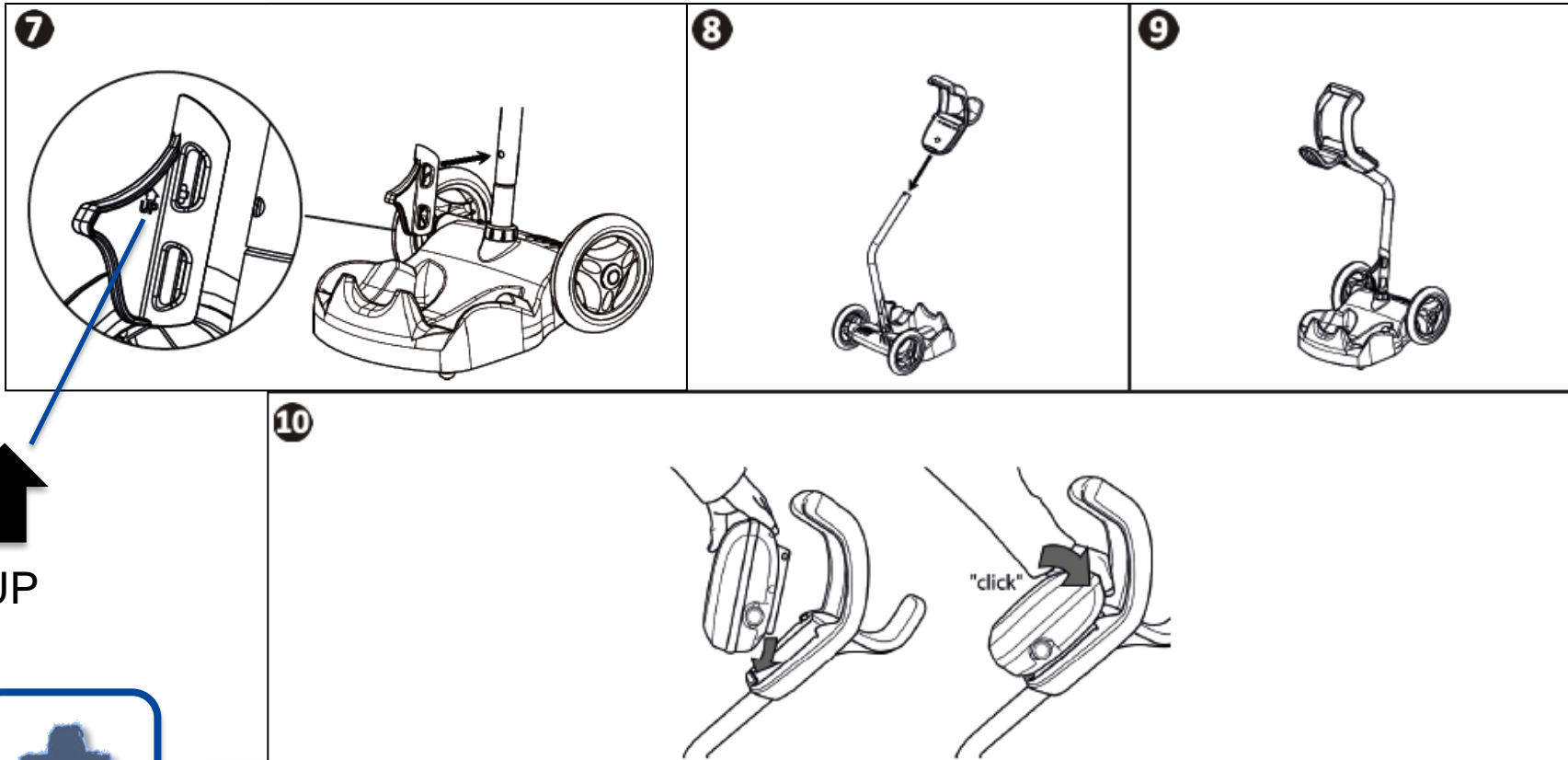
No tools or fixings required

"click"



Installation

Mounting the carriage (available as an accessory)



UP



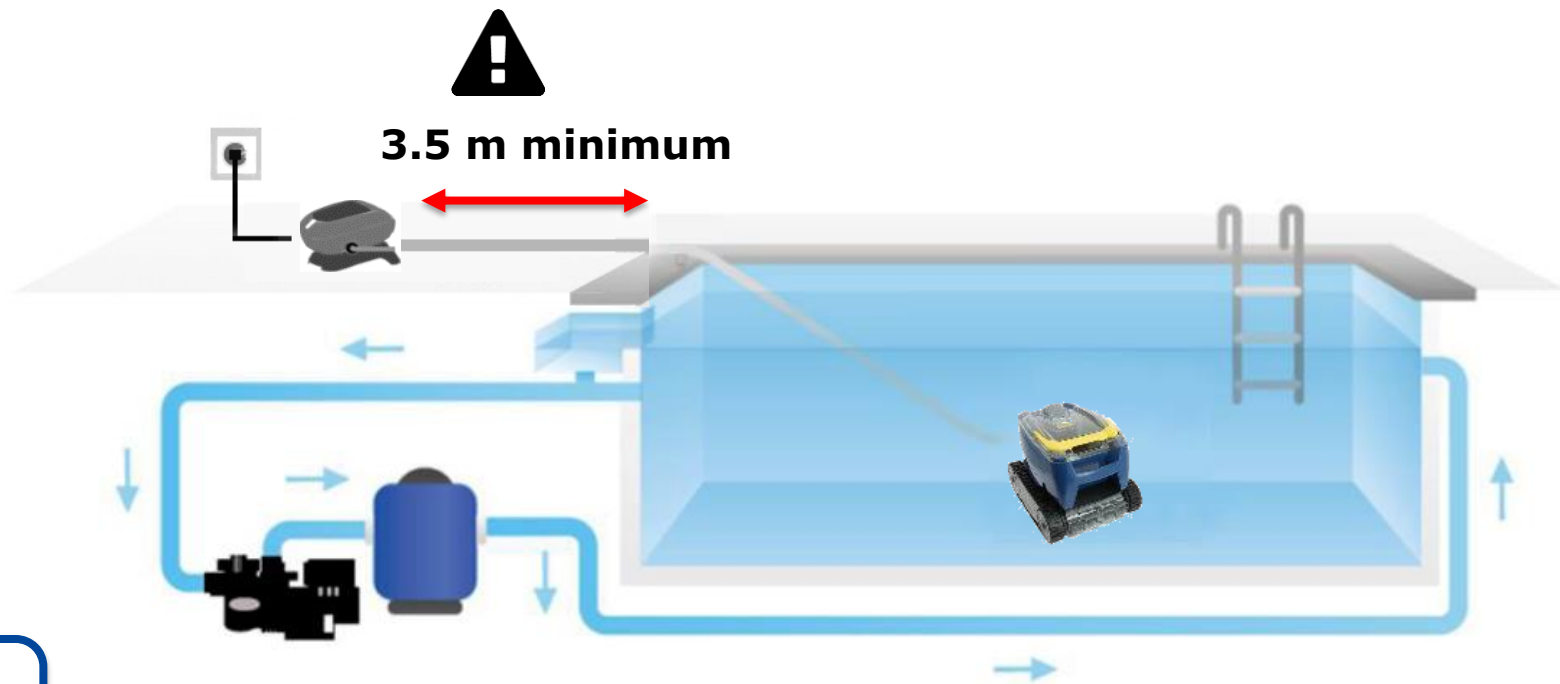
No tools or fixings required

"click"



Installation

Positioning



Minimum distance of 3.5 metres between the command unit and the edge of the pool



Selection guide

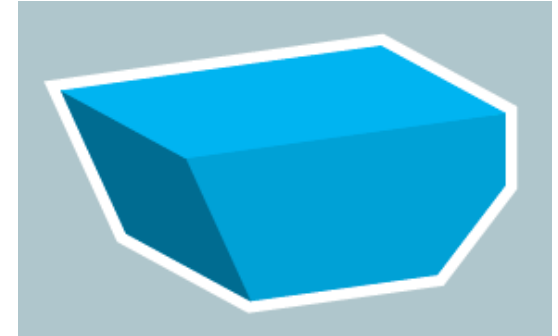
Pool configuration



In ground Above ground
with stiff sides



All shapes



All bottom types*



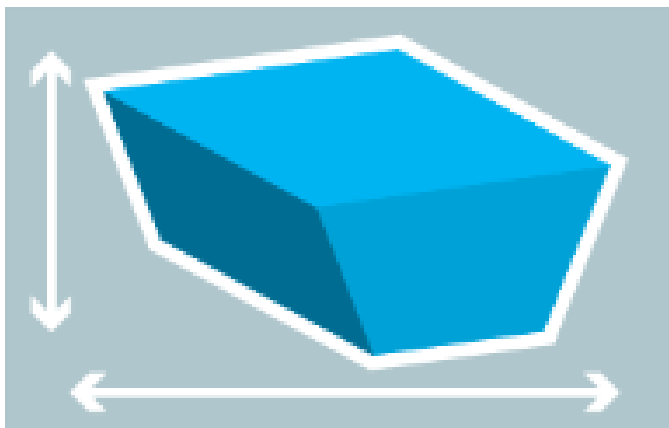
The Tornax range adapts to each pool

* Provide a PVA brush kit for pools with right angles between the bottom and the side.



Selection guide

Pool dimension (according to model)



8 X 4 m

10 X 5 m



14 m of cable

16.5 m of cable



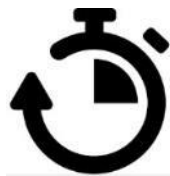
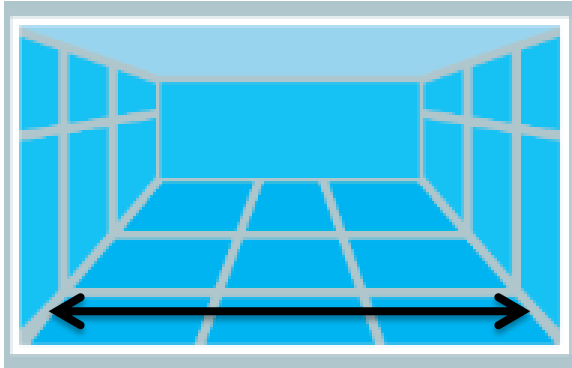
The floating cable must be long enough to cover the whole pool



Selection guide

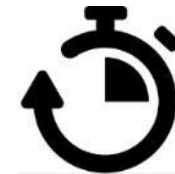
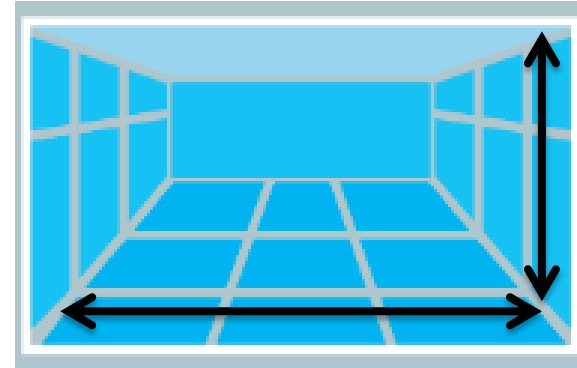
The cleaning surfaces (according to model)

Bottom only



2 hrs

Bottom and sides



2.5 hrs

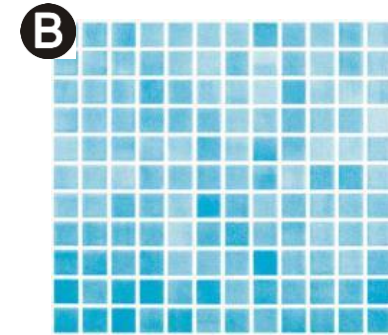


- Fully identify the cleaning requirements
- Setting configured by default (no selection possible)




Selection guide

Pool covering (according to model)



A	PVC liner, reinforced PVC, painted concrete, Polyester (casing)
B	Tiling, enamel *



Standard brush
PVA brush* 



* The PVA brush is only recommended for pools with right angles between the bottom and the side (provided as an option)



Use

Prepare the pool for optimum cleaning

Water between **15°C and 35°C**



pH between **6.8 and 7.6**

Chlorine **< 3mg/l**



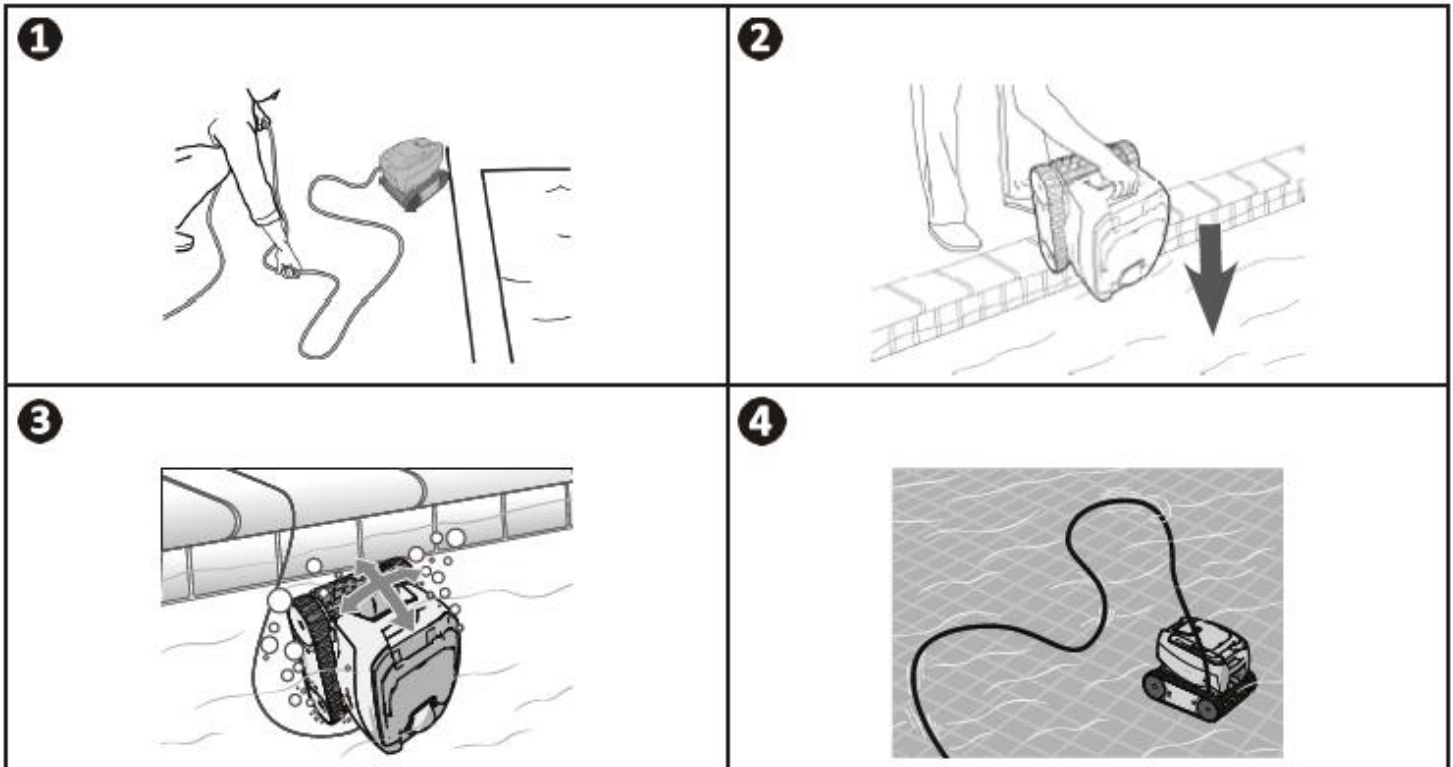
At the start of the bathing season,
remove the large debris using the net





Use

Immersing the cleaner

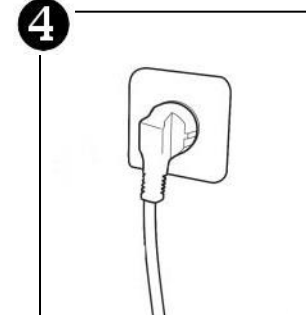
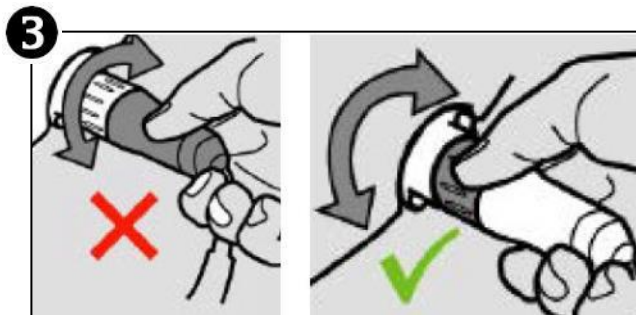
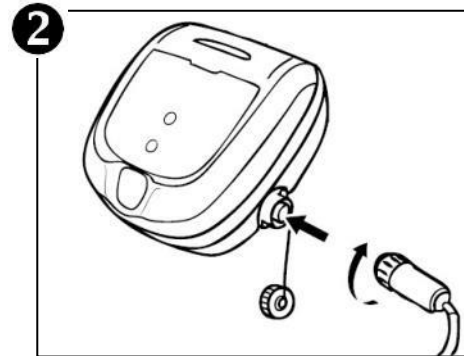
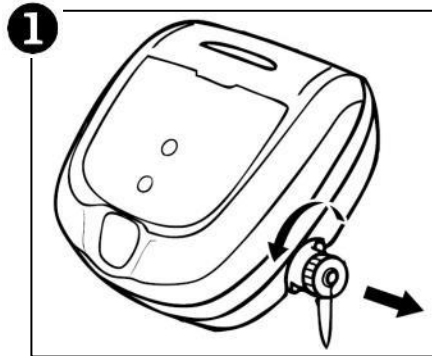


As the cleaner is light, it is sensitive to the twisting and tension of the floating cable. So, it will need a maximum length of cable in the pool = Will avoid the cable becoming tangled.



Use

Electrical connection



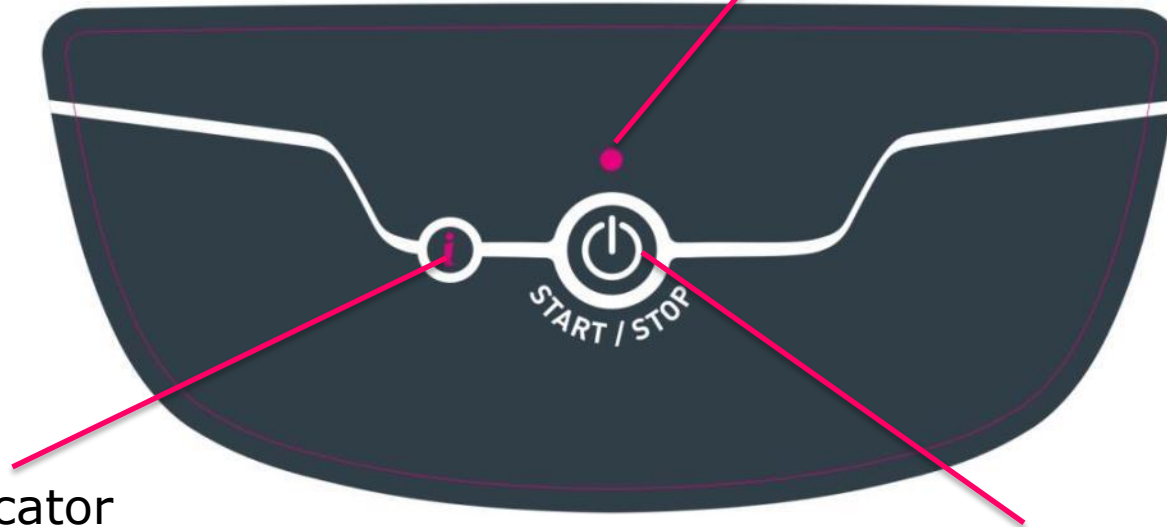
To protect the electrical wires from splashing, make sure that the connector's ring is fully tightened



Use

The control box

LED on: cleaning in progress



"Control" indicator

Short press:
Start / Stop cycle

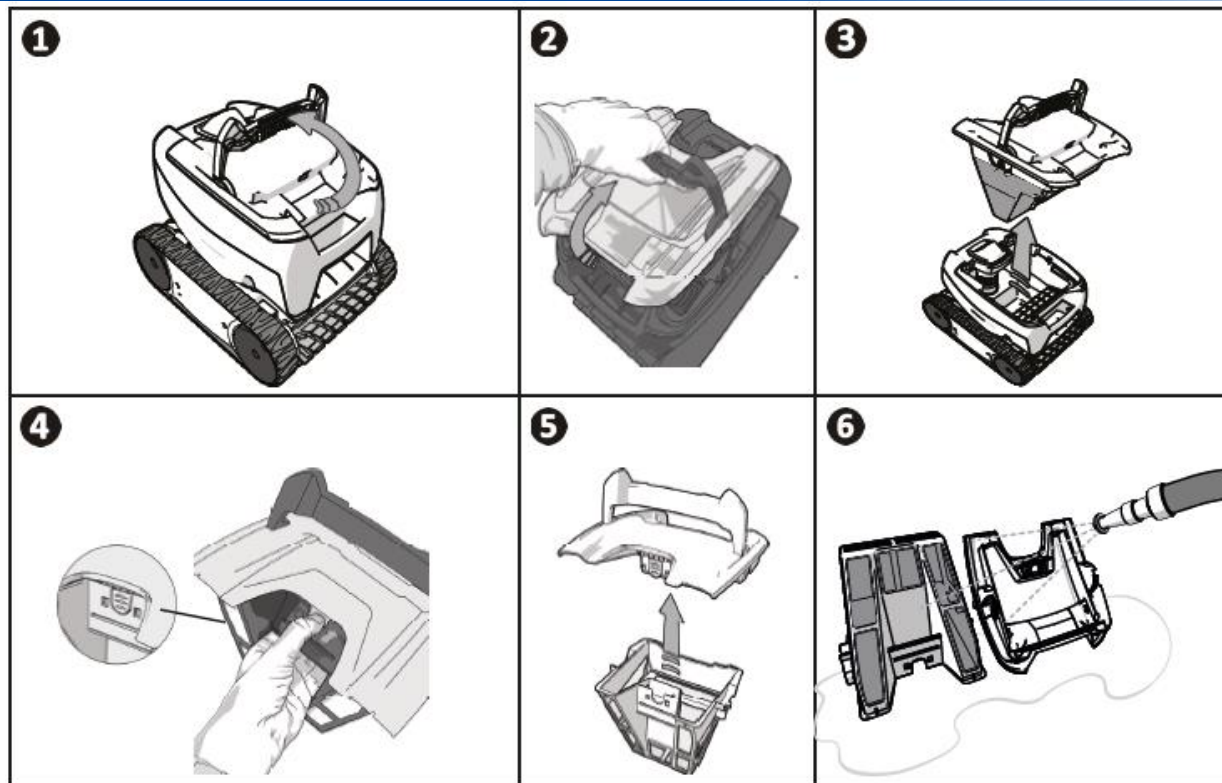


An LED comes on to indicate that the cleaning is in progress



Maintenance

Filter cleaning / or replacement



- Clean the filter after the end of each cleaning cycle
- Clean it several times if the pool is very dirty
- Replace the filter every 2 years



Maintenance

Cleaning the propeller



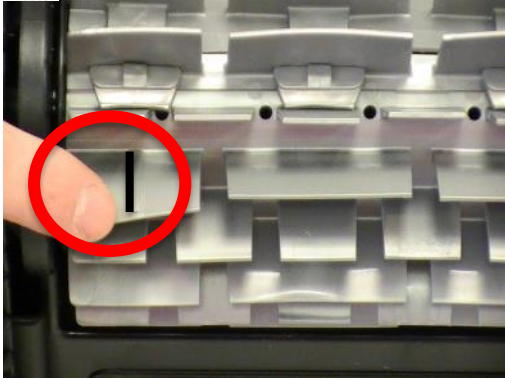
Check that no debris is blocking the propeller



Maintenance

Replacing the brushes

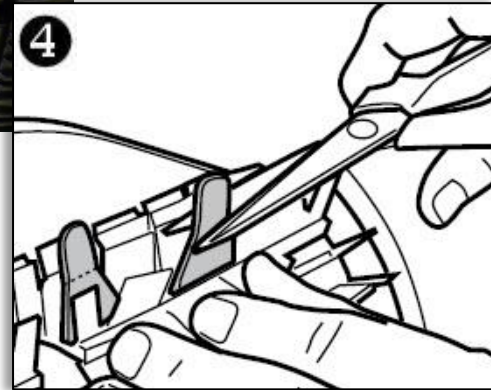
1



2



3



4

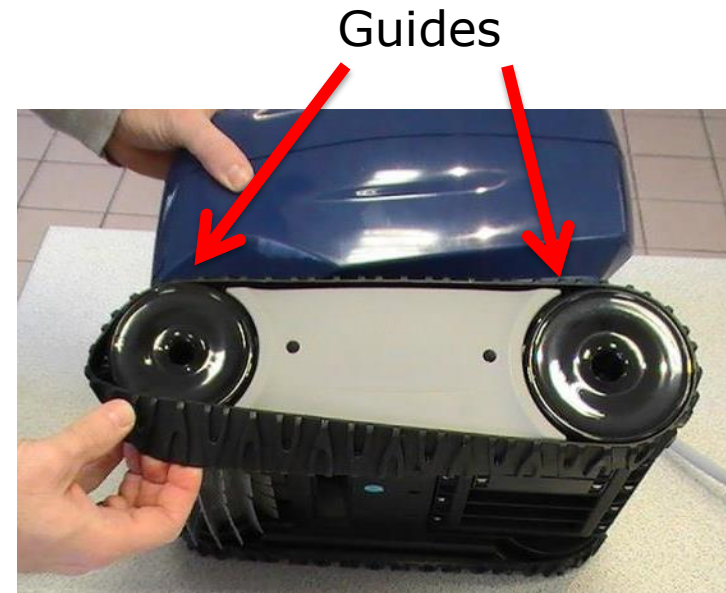


- The brushes have wear indicators
- Replace the brushes every 2 years



Maintenance

Replacing the tracks



- Replace the tracks according to the wear indicators
- Position the tracks under the guides



Troubleshooting assistance

Control indicator (User)



1. Check List to be carried out according to the LED flashing



2. Problem solved by the user (often related to a cleaner maintenance requirement)



3. If the problem continues, professional intervention necessary






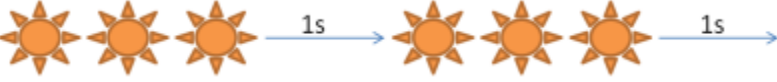
The alerts guide the user to carry out simple checks on the cleaner, they are more independent



Troubleshooting assistance

Control indicator (User)



LED flashing 	SOLUTIONS
	<ul style="list-style-type: none"> • Check that the cleaner is correctly connected to the control box. If necessary, unplug it and reconnect it following the appropriate procedure.
	<ul style="list-style-type: none"> • Check that there is nothing preventing the brush and support from turning correctly. To do so, raise the tracks to check that there are no external elements jammed in a housing.
	<ul style="list-style-type: none"> • Cleaner operating outside the pool. Make sure you start the robot when it is in the water (see immersion steps) • Check that there are no stones or hair in the propeller. • Clean or change the filter if necessary.



The LED switches off automatically when the problem is solved



Assistance for troubleshooting by professionals

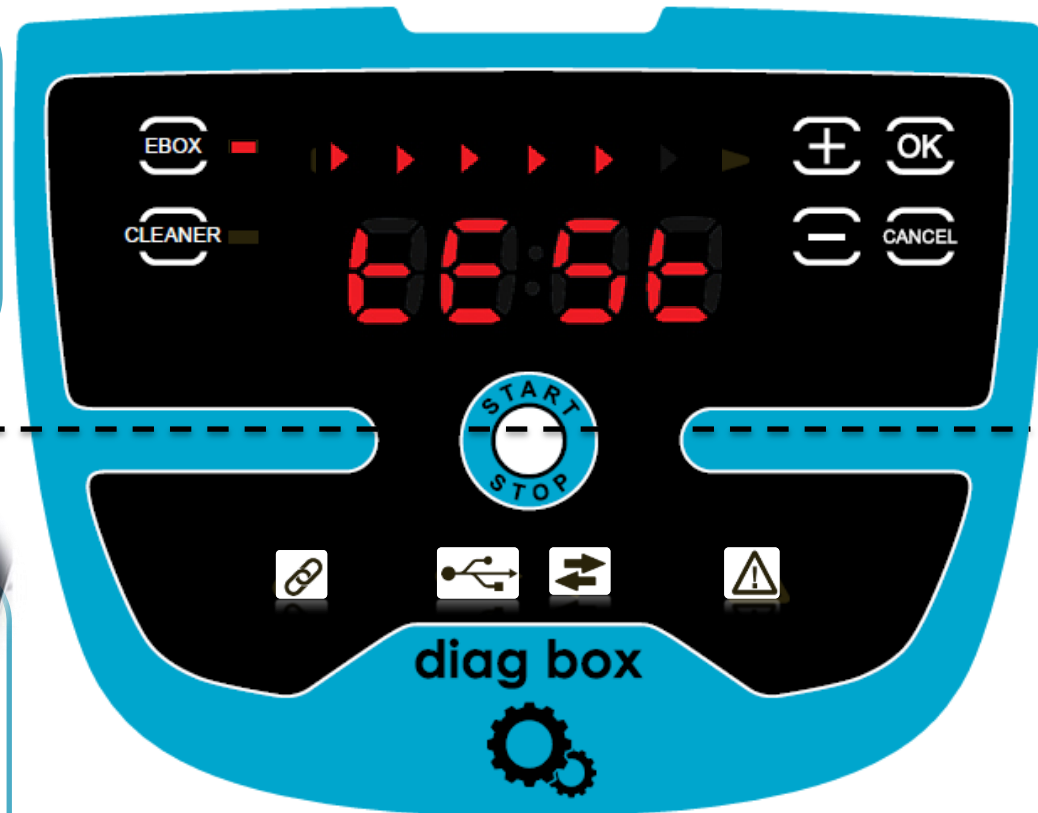
1 Diag Box = 2 types of diagnostic test

QUICK TEST

- Automatic test launch
- Test step displays
- Error message displays

FULL TEST (software)

- Detailed information about the cleaner (operating times, error code history, etc.)





Troubleshooting assistance

The cleaner does not or no longer climbs the pool sides as it originally did (depending on the model).

The filter is full or dirty

Clean the filter in fresh water



The filter is clogged

Clean the filter in an acidic solution (e.g. white vinegar), replace it if necessary



The sides are slippery

Shock chlorination and lower the pH



The brush does not turn at the bottom of the sides

Remove the elements which might be preventing it from turning



The brush is worn (see indicator)

Replace it



The water must not be below 15°C



Troubleshooting assistance

When the cleaner moves forward in a straight line, it is no longer flat on the floor of the pool.

There is still air in the cleaner's casing

Repeat the immersion steps



The filter is full or dirty

Clean with fresh water



The filter is clogged

Clean the filter in an acidic solution (e.g. white vinegar), replace it if necessary



The propeller is damaged

Replace the propeller



It is possible that the cleaner may lift up more or less during rotations; this is normal



Troubleshooting assistance

The cable gets tangled

The floating cable is fully in the water

Vary the location where the cleaner is immersed

After a cleaning cycle, spread the cable so that it returns to its initial shape, then store it carefully

The water must not be below 15°C

As the cleaner is light, it is sensitive to the twisting and tension of the floating cable. So, it needs a maximum length of cable in the pool

