

HYDRA M

WITH 2 MANOMETERS

SELF-CLEANING FILTERS
WITH BACK-WASH



HYDRA M with 2 manometers

Self-cleaning filters with back-wash

HYDRA M self-cleaning filters is provided with 2 manometers which ensure the proper timing for the cleaning operation: when the pressure at outlet manometer drops 1 BAR below the pressure at inlet manometer it is time to operate the cleaning operation.

HYDRA M have been designed with innovative solutions regarding the efficiency of the system for the self-cleaning of the cartridge, thanks to newly designed back-wash on counter-current which grants the highest particles removal from the cartridge. When the cartridge is to be cleaned, the cleaning operation with back-wash is simply operated by opening the discharge ball valve at the filter bottom. That operation causes a pressure-drop which pushes the cartridge downward the housing bottom and reverses the water flow from the outer to the inner side of the cartridge. It is that counter-current back flow which washes away to the discharge the impurities trapped onto the outer side of the cartridge. The filters perform 90 micron filter rate with stainless steel net cartridge or plastic net cartridge and 50 micron filter rate with pleated plastic net cartridge.

SPECIFICATIONS

Non-toxic materials, suitable for drinking water, in compliance with the UE "Directive 98/83/EC".

Head: reinforced polypropylene.

Bowl: PET.

O-ring: EPDM.

Breather-valve: body stainless steel, O-ring EPDM.

IN/OUT threads: CW 614 N brass inserts.

RAH cartridge: stainless steel net AISI 316, frame and end caps polypropylene.

RLH cartridge: polyester net, frame and end caps polypropylene.

RSH cartridge: polypropylene pleated net, frame and end caps polypropylene.

Cartridges spring: stainless steel AISI 316-L.

Discharge ball-valve: CW 614 N brass.

Discharge hose-holder: nylon.

Manometers: radial type, pressure range BAR 0-12, PSI 0-170.



WEIGHTS

HYDRA M RAH: 922 gr.

HYDRA M RLH: 900 gr.

HYDRA M RSH: 909 gr.



HYDRA M-RAH



HYDRA M-RLH



HYDRA M-RSH

BENEFITS OF HYDRA M SELF-CLEANING FILTERS

Free from frequent operation of filter opening and cartridge washing, with all the related operation: water mains turn off - turn on, interruption of the water delivery, water flood when opening the filter, just open and close the discharge valve and get a clean filter in a while.

Perform self-cleaning with back-wash operation and ensure the best removal of particles from the cartridge surface with the counter-current flow, which pushes the particles to the discharge.

2 Manometers grant control of pressure drop and ensure the most appropriate cartridge cleaning. Water is delivered even during the self-cleaning operation, with no interruption of the water supply.

| model | in/out connections | cartridge type | filtration micron | maximum flow rate l/h @ 3 BAR | pressure drop BAR @ maximum flow rate |
|----------------------------|--------------------|---------------------------|-------------------|-------------------------------|---------------------------------------|
| HYDRA M 1/2 - RAH 90 mcr | 1/2" | stainless steel net | 90 | 3800 | 0,41 |
| HYDRA M 3/4 - RAH 90 mcr | 3/4" | stainless steel net | 90 | 5300 | 0,41 |
| HYDRA M 1 - RAH 90 mcr | 1" | stainless steel net | 90 | 6000 | 0,41 |
| HYDRA M 1 1/4 - RAH 90 mcr | 1" 1/4 | stainless steel net | 90 | 8000 | 0,41 |
| HYDRA M 1 1/2 - RAH 90 mcr | 1" 1/2 | stainless steel net | 90 | 10000 | 0,41 |
| HYDRA M 1/2 - RLH 90 mcr | 1/2" | polyester net | 90 | 3800 | 0,44 |
| HYDRA M 3/4 - RLH 90 mcr | 3/4" | polyester net | 90 | 5300 | 0,44 |
| HYDRA M 1 - RLH 90 mcr | 1" | polyester net | 90 | 6000 | 0,44 |
| HYDRA M 1 1/4 - RLH 90 mcr | 1" 1/4 | polyester net | 90 | 8000 | 0,44 |
| HYDRA M 1 1/2 - RLH 90 mcr | 1" 1/2 | polyester net | 90 | 10000 | 0,44 |
| HYDRA M 1/2 - RSH 50 mcr | 1/2" | pleated polypropylene net | 50 | 3800 | 0,43 |
| HYDRA M 3/4 - RSH 50 mcr | 3/4" | pleated polypropylene net | 50 | 5300 | 0,43 |
| HYDRA M 1 - RSH 50 mcr | 1" | pleated polypropylene net | 50 | 6000 | 0,43 |
| HYDRA M 1 1/4 - RSH 50 mcr | 1" 1/4 | pleated polypropylene net | 50 | 8000 | 0,43 |
| HYDRA M 1 1/2 - RSH 50 mcr | 1" 1/2 | pleated polypropylene net | 50 | 10000 | 0,43 |

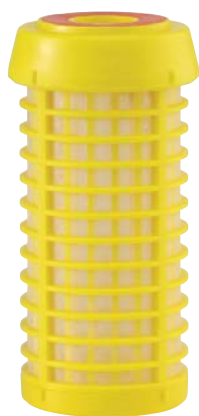
Remark: maximum flow rate values are experimentally obtained at Atlas Filtri testing laboratory with specific testing devices, using new, clean filters, under the following testing conditions:

- inlet pressure: 3 BAR - inlet water temperature: 10°C - room temperature: 20°C - raw water: potable water from municipal supply

cartridges assortment



RAH cartridge 90 micron stainless steel net AISI 316



RLH cartridge 90 micron polyester net



RSH cartridge 50 micron pleated polypropylene net



-X- Spanner



-S- wall bracket wall bracket screws

spare parts



Stainless steel AISI 316-L spring for cartridges RAH, RLH, RSH



housing O-ring



Brass discharge ball-valve with gasket



Plastic hose-holder



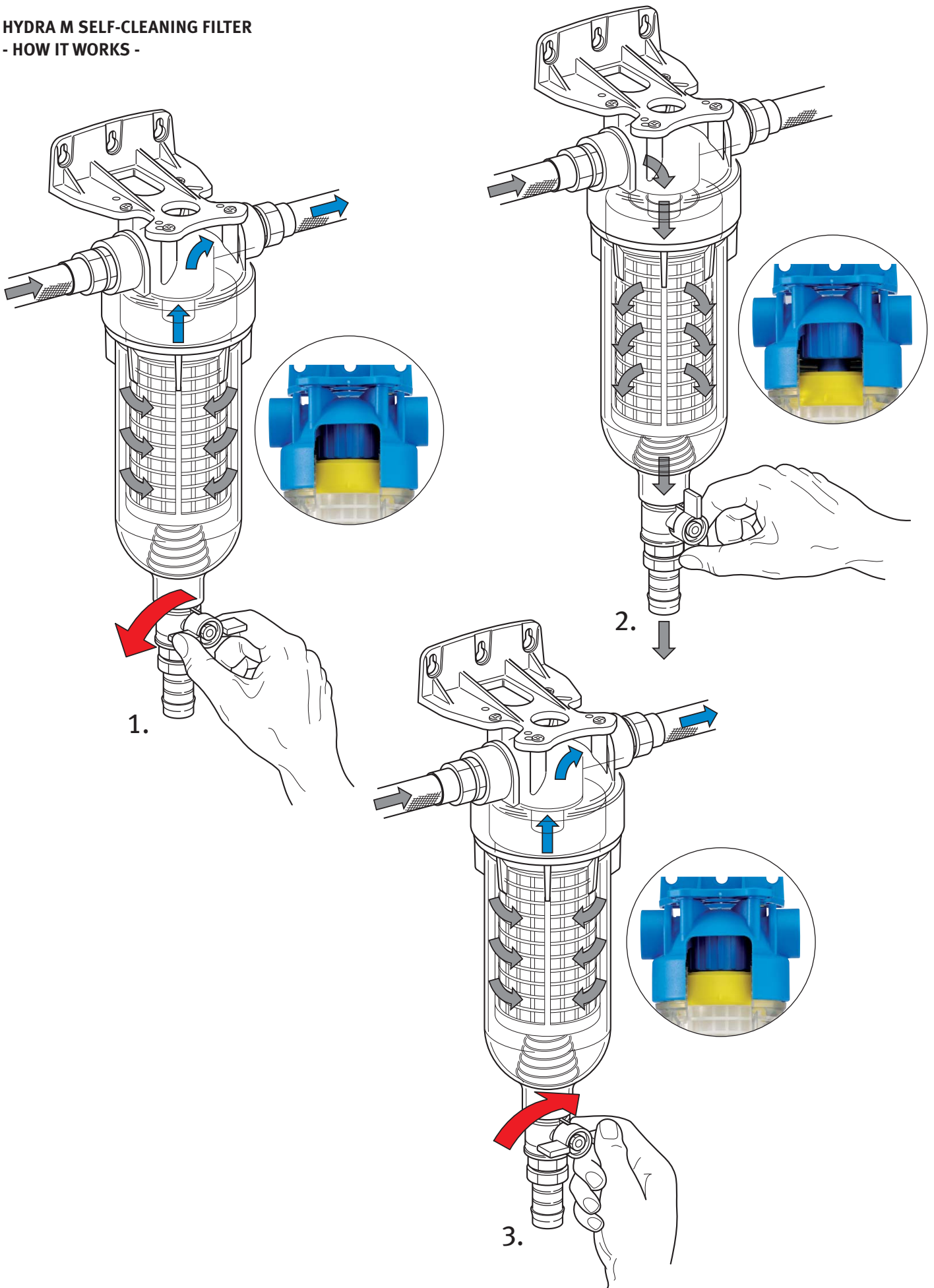
Brass hose-holder



IN female plastic in/out threads 1/2", 3/4", 1", 1 1/4, 1 1/2

variants

HYDRA M SELF-CLEANING FILTER
- HOW IT WORKS -



R00-05/09. Subject to change without notice

