

### SPECIFICATIONS

PIPES in → out	Ø mm	CODE	KV m <sup>3</sup> /h	M.O.P.D. bar		DIMENSIONS mm				WEIGHT Kg
				AC	DC	A	B	C	D	
1/4 NPT	11	8302	1.40	20	20	55	91	60	78	0.560
3/8 NPT	11	8303	1.50	20	20	55	91	60	78	0.535
1/2 NPT	11	8304	1.60	20	20	55	91	60	78	0.500
G 1/4	11	8322	1.40	20	20	55	91	60	78	0.560
G 3/8	11	8323	1.50	20	20	55	91	60	78	0.535
G 1/2	11	8324	1.60	20	20	55	91	60	78	0.500

### DIRECT ACTING

P. MIN. = 0 bar

PIPES in → out	Ø mm	CODE	KV m <sup>3</sup> /h	M.O.P.D. bar		DIMENSIONS mm				WEIGHT Kg
				AC	DC	A	B	C	D	
G 1/4	11	8332	1.50	0.5	0.3	55	91	60	78	0.560
G 3/8	11	8333	1.60	0.5	0.3	55	91	60	78	0.535
G 1/2	11	8334	1.70	0.5	0.3	55	91	60	78	0.500

				POWER	
				8322-23-24 8332-33-34	
				HOLDING	IN RUSH
V~	12 24 48 110 230 400	50 60 Hz		22VA	41VA
V=	12 24 48 110			21W	

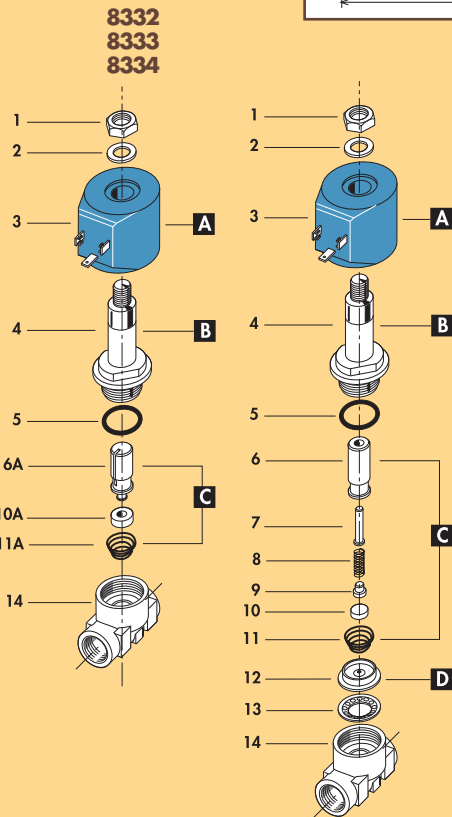
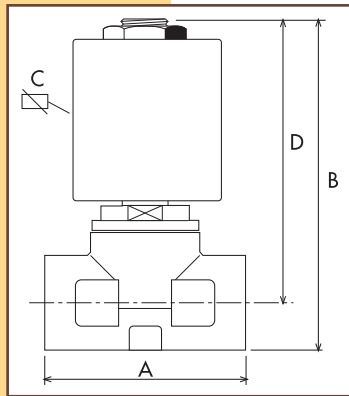
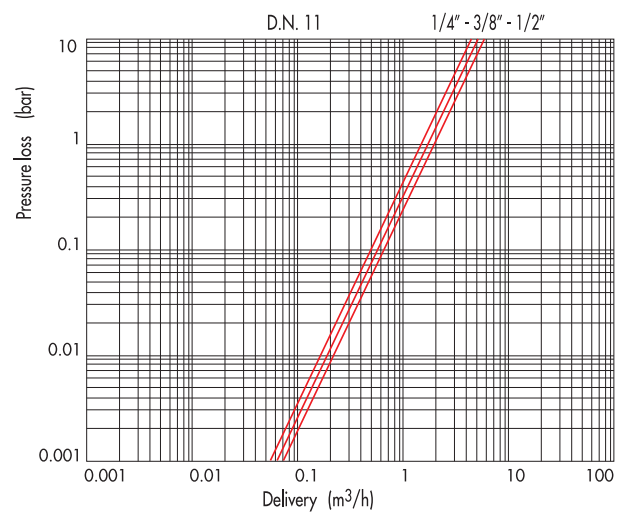
### ELECTRICAL INFORMATION

V~	12 24 48 110 230 400	50 60 Hz	22VA	41VA
V=	12 24 48 110		21W	

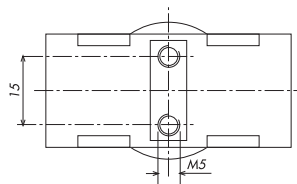
### MAX TEMPERATURE

FLUIDS			AMBIENT
NBR	FPM	EPDM	80°C
90°C	150°C	130°C	

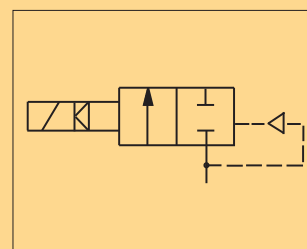
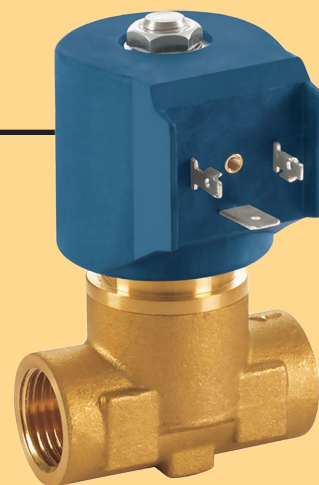
### PRESSURE LOSS DIAGRAM



- |             |                 |
|-------------|-----------------|
| 1           | Lock nut        |
| 2           | Washer          |
| 3           | Coil            |
| 4           | Tube top        |
| 5           | O-ring          |
| 6           | Plunger         |
| 7           | Shock-absorber  |
| 8           | Spring          |
| 9           | Support         |
| 10          | Seal            |
| 11          | Spring          |
| 12          | Diaphragm       |
| 13          | Support         |
| 14          | Valve body base |
| SPARE PARTS |                 |
| <b>A</b>    | Coil            |
| <b>B</b>    | Tube guide      |
| <b>C</b>    | Plunger         |
| <b>D</b>    | Diaphragm       |



## SOLENOID VALVE PILOT OPERATED 2/2 WAY N.C.



UK

### GENERAL FEATURES

**MINIMUM DIFFERENTIAL WORKING PRESSURE** 0,1 bar (models 8332-33-34 0 bar)

**PARTS IN CONTACT WITH THE FLUID:**

**SEALING** FPM, NBR for 8332-8333-8334

**BODY** BRASS

**INTERNAL PARTS** STAINLESS STEEL

**FLUIDS** AIR - WATER - INERT GAS - LIGHT OILS

**ONE WAY DIRECTION VALVE**

**SERVICEABLE VALVE**

**VALVE SUPPLIED WITH** THREE POLE PLUG CONNECTOR UNI ISO 4400 (DIN 43650A)-IP65

**MOUNTING POSITION** Any, the position with the coil downwards is not recommended.

**AMBIENT TEMPERATURE** 80°C, in D.C. for temperatures higher than 40°C, the performances (M.O.P.D.) could decrease.

**SPECIAL EXECUTIONS** SEALING IN EPDM, NBR

DIRECT ACTING VERSION (8332,8333,8334)

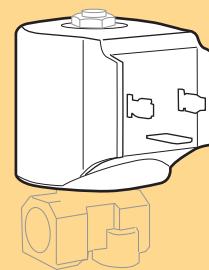
FOR MODELS 8332,8333,8334, A SPECIAL COIL IS AVAILABLE TO INCREASE PERFORMANCES

(M.O.P.D.) IN D.C. TO 0,5 BAR

ADJUSTABLE TIMER TO PRESET DUTY CYCLE.

### ACCESSORIES

*HIGH FREQUENCY APPLICATIONS  
CONDENSATE DRAIN FOR COMPRESSORS*



**COIL TYPE B12 M**