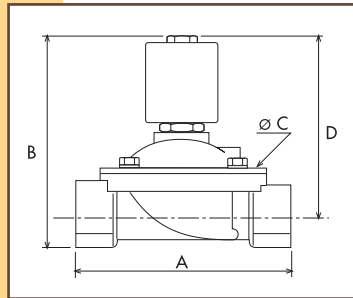
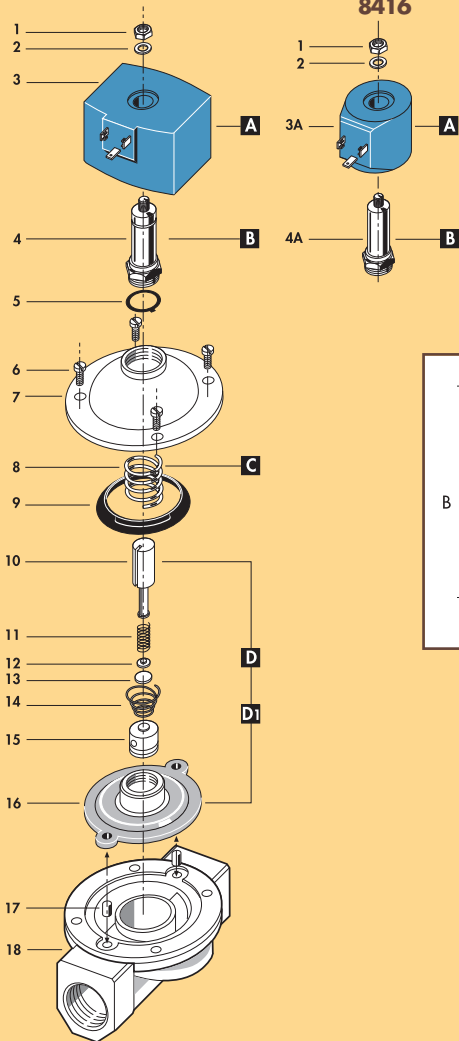


8417
8418
8419

8413
8414
8415
8416



1	Lock nut
2	Washer
3	Coil
4	Tube guide
5	O-ring
6	Screw
7	Valve body top
8	Spring
9	Ring
10	Plunger
11	Spring
12	Support
13	Seal
14	Spring
15	Bush
16	Diaphragm
17	Bush
18	Valve body base
SPARE PARTS	
A	Coil
B	Tube guide
C	Spring
D	Diaphragm unit (A.C.)
D1	Diaphragm unit (D.C.)

PECIFICATIONS

PIPES in → out	Ø mm	CODE	KV m ³ /h	M.O.P.D. bar		DIMENSIONS mm				WEIGHT Kg
				AC	DC	A	B	C	D	
G 3/8	12	8413	2.20	5	5	61	105	48	92	0.680
G 1/2	12	8414	2.20	5	5	61	105	48	92	0.660
G 3/4	20	8415	5.50	4	2	100	110	80	93	1.100
G 1	25	8416	7.50	4	2	100	116	80	96	1.200
G 1 1/4	36	8417	17.50	4	2	146	200	128	170	5.200
G 1 1/2	39	8418	19.00	4	2	146	200	128	170	5.000
G 2	51	8419	32.40	4	2	174	216	146	180	6.500
3/8 NPT	12	8423	2.20	5	5	61	105	48	92	0.680
1/2 NPT	12	8424	2.20	5	5	69	105	48	92	0.670

ELECTRICAL INFORMATION

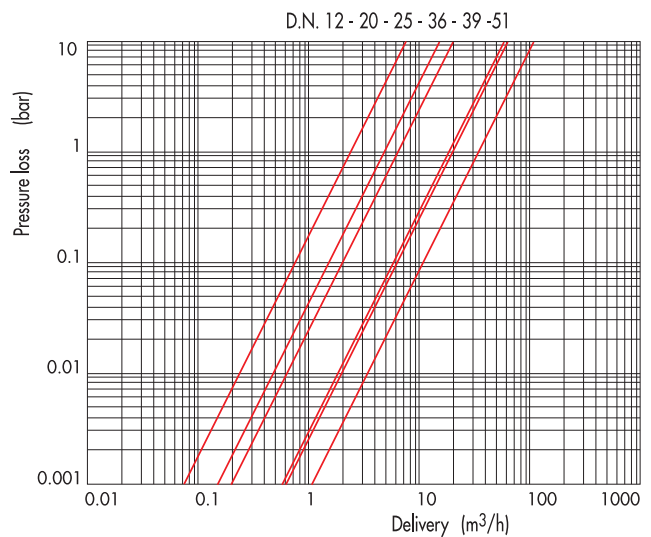
		POWER						
		8413-14-15-16		8417-18-19				
		HOLDING	IN RUSH	HOLDING	IN RUSH			
V~	12 24 48 110 230 400	50	60	Hz	18VA	47VA	140VA	430VA
V=	12 24 48 110	21W		43W				

For construction details of the coils see chapter "PROJECT INFORMATION"

MAX TEMPERATURE

FLUIDS				AMBIENT
NBR	EPDM	EPDM-KTW	FPM	
90°C	130°C	130°C	150°C	80°C

PRESSURE LOSS DIAGRAM



8413
8414
8415
8416
8423
8424



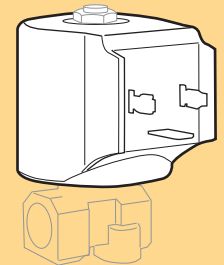
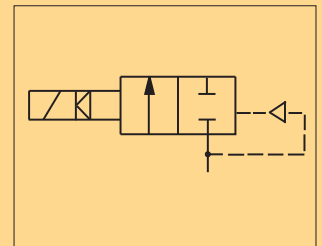
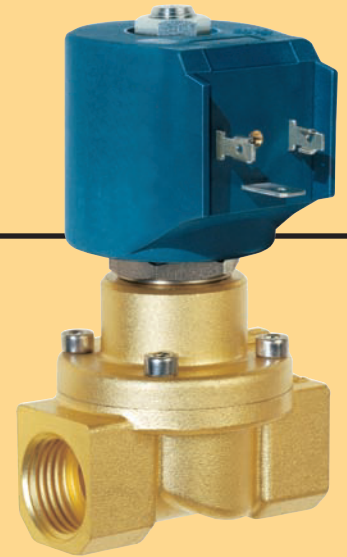
8417
8418
8419



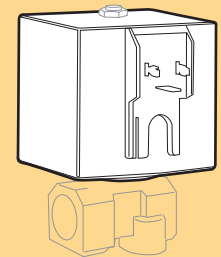
E SOLENOID VALVE SERVO-ACTUATED 2/2 WAY N.C.



KTW



8413-8414-8415-8416-8423-8424
COIL TYPE B12



8417-8418-8419
COIL TYPE B60

UK

GENERAL FEATURES

MINIMUM DIFFERENTIAL WORKING PRESSURE: 0 bar

PARTS IN CONTACT WITH THE FLUID

SEALING NBR on request FPM - EPDM

EPDM-KTW sealing approved and DVGW certified for interception of potable water

BODY BRASS

INTERNAL PARTS STAINLESS STEEL

FLUIDS WATER- AIR - LIGHT OILS

ONE WAY DIRECTION VALVE

SERVICEABLE VALVE THREE POLE PLUG CONNECTOR UNI ISO 4400 (DIN 43650A)-IP65

VALVE SUPPLIED WITH MOUNTING POSITION We advice installation of the valve with the coil vertical. Models 8417,8418,8419 must be mounted in the horizontal position with the coil vertical .

AMBIENT TEMPERATURE 80°C, in D.C. for temperatures higher than 40°C, the performances (M.O.P.D.) could decrease.

SPECIAL EXECUTIONS - VERSION WITH WATER HAMMER DEVICE FOR SLOWER CLOSING TIME

- FOR MODELS 8415 AND 8416 , COIL TYPE B20 (30 W) IS AVAILABLE TO INCREASE PERFORMANCES (M.O.P.D.) IN D.C. TO 4 BAR.

- VERSION WITH KTW HOMOLOGATION.