

Vacuum/Pressure Operation, single-stage

Technical Features

Maintenance-free through external permanently greased bearings, non-contacting impellers and fan-cooled motors

Environmentally safe through oil-free compression, low energy consumption and low noise level

User-friendly through robust yet lightweight construction of all sizes due to die cast aluminum, through vertical and horizontal mounting position and suited for variable speed control

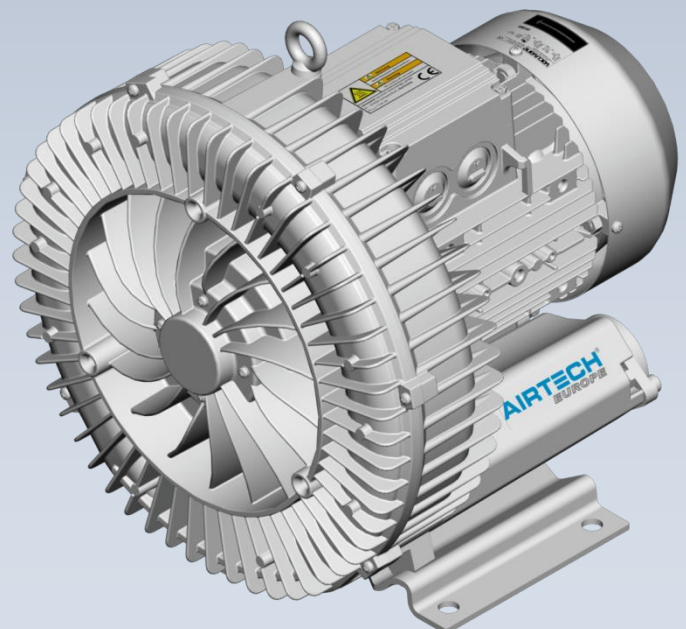
Worldwide usable through 50/60Hz wide voltage range motors with insulation class F and type of protection IP55, as well as built-in overheat protection and CE, UL and CSA certification

Customized for your specific needs and applications

ASC-Series,

ASC0070-1M

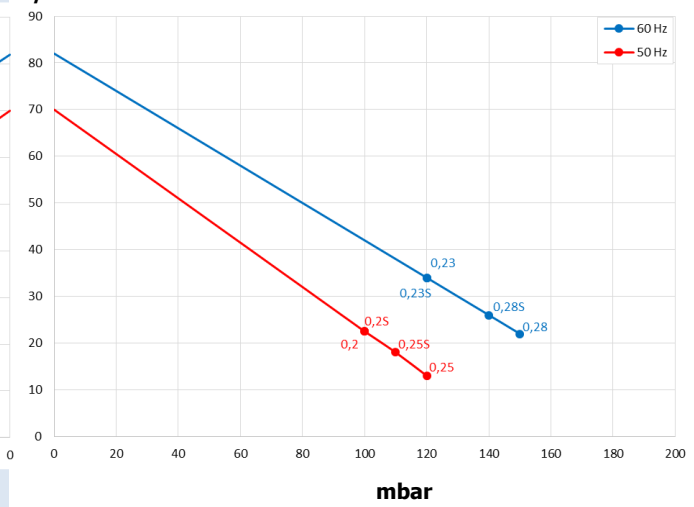
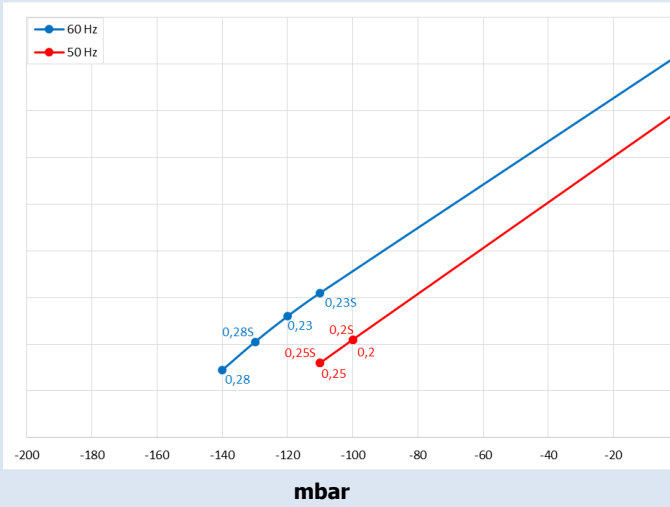
AIRTECH ASC side channel blowers are dynamic blowers that transfer kinetic energy to the medium agent by contactless rotating impellers. The gas is drawn in through a built-in silencer and then the energy transfer is taking place repeatedly in the blower housing. At the discharge side the gas is wiped off at the interrupter and discharged through a second built-in silencer. The energy transfer is achieved in single-stage version as well as two-stage version with two separate impellers for higher differential pressures.



Vacuum Operation

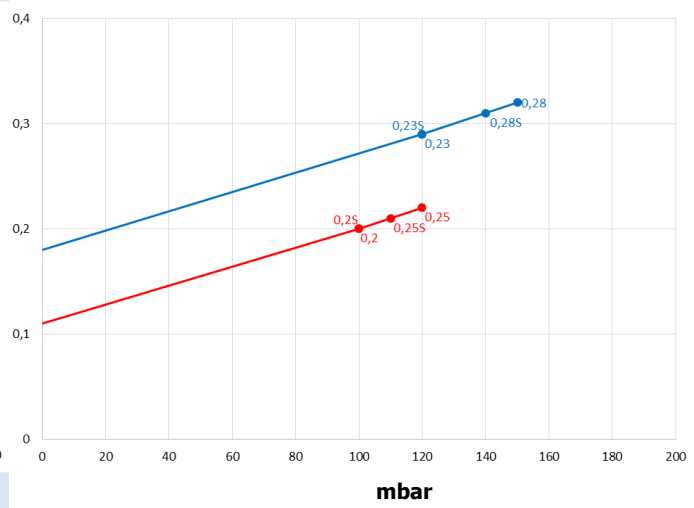
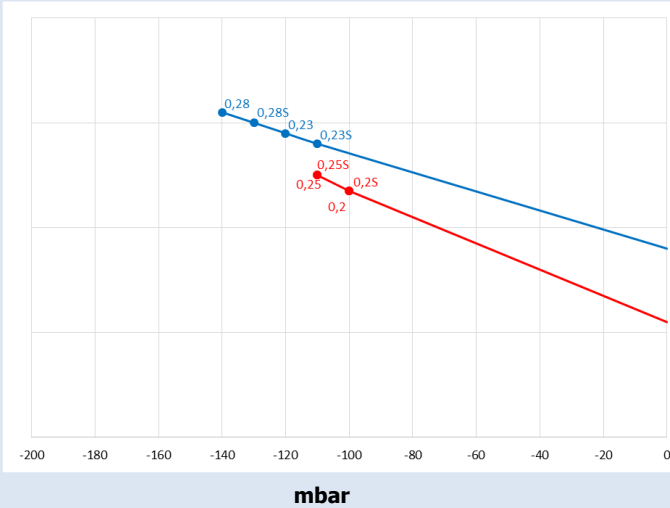
Pressure Operation

Suction air flow
m³/h



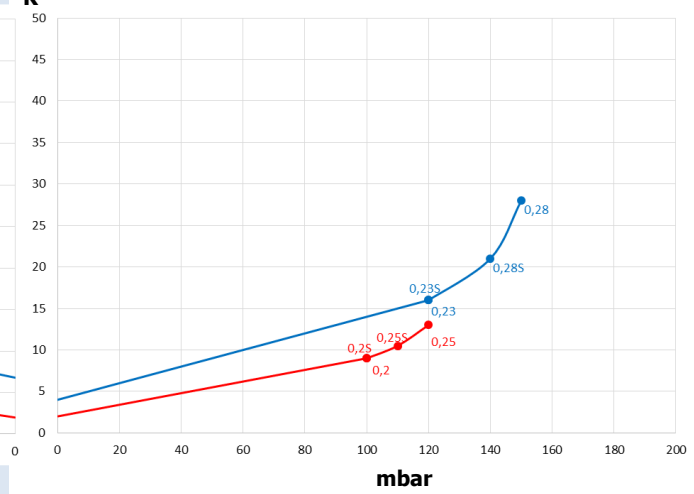
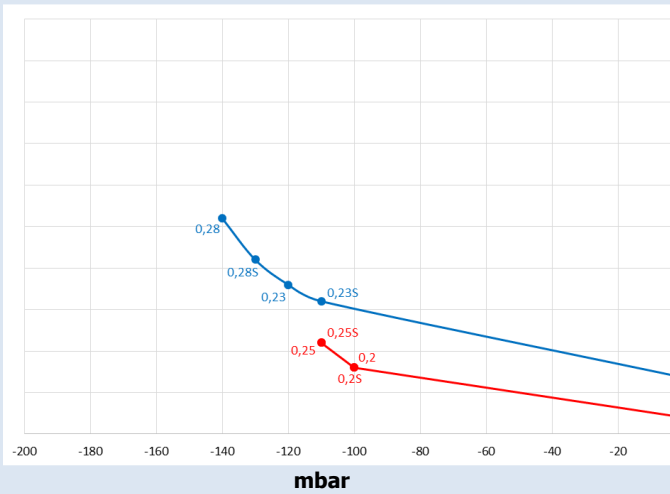
Power requirement on the blower shaft

kW



Temperature rise on the exhaust air

K



Curves are valid for continuous operation; medium: air at 15°C, measured at inlet port and 1013 hPa (mbar abs.) atmospheric backpressure, Tolerance: ± 10%; ambient temperature: -25° to +40°C

Curves are valid for continuous operation; medium: air at 15°C, measured at inlet port and 1013 hPa (mbar abs.) atmospheric pressure, Tolerance: ± 10%; ambient temperature: -25° to +40°C

Side channel blower single stage, TEFC

Type	kW	Hz	m ³ / h	hPa (mbar) ¹⁾	V ²⁾	A	dB(A) ³⁾	kg
ASC0070-1MA200-1	0,2S	50	70	-100 / 100	230	1,5	48	7
	0,23S	60	84	-110 / 120	230	1,6	50	7
ASC0070-1MT200-6	0,2	50	70	-100 / 100	200-240 Δ / 345-415 Y	1,75 Δ / 1,0 Y	48	6
	0,23	60	84	-120 / 120	220-275 Δ / 380-480 Y	1,75 Δ / 1,0 Y	50	6
ASC0070-1MA250-1	0,25S	50	70	-110 / 110	230	1,7	48	8
	0,28S	60	84	-130 / 140	230	1,9	50	8
ASC0070-1MT250-6	0,25	50	70	-110 / 120	200-240 Δ / 345-415 Y	2,1 Δ / 1,2 Y	48	7
	0,28	60	84	-140 / 150	220-275 Δ / 380-480 Y	2,0 Δ / 1,15 Y	50	7

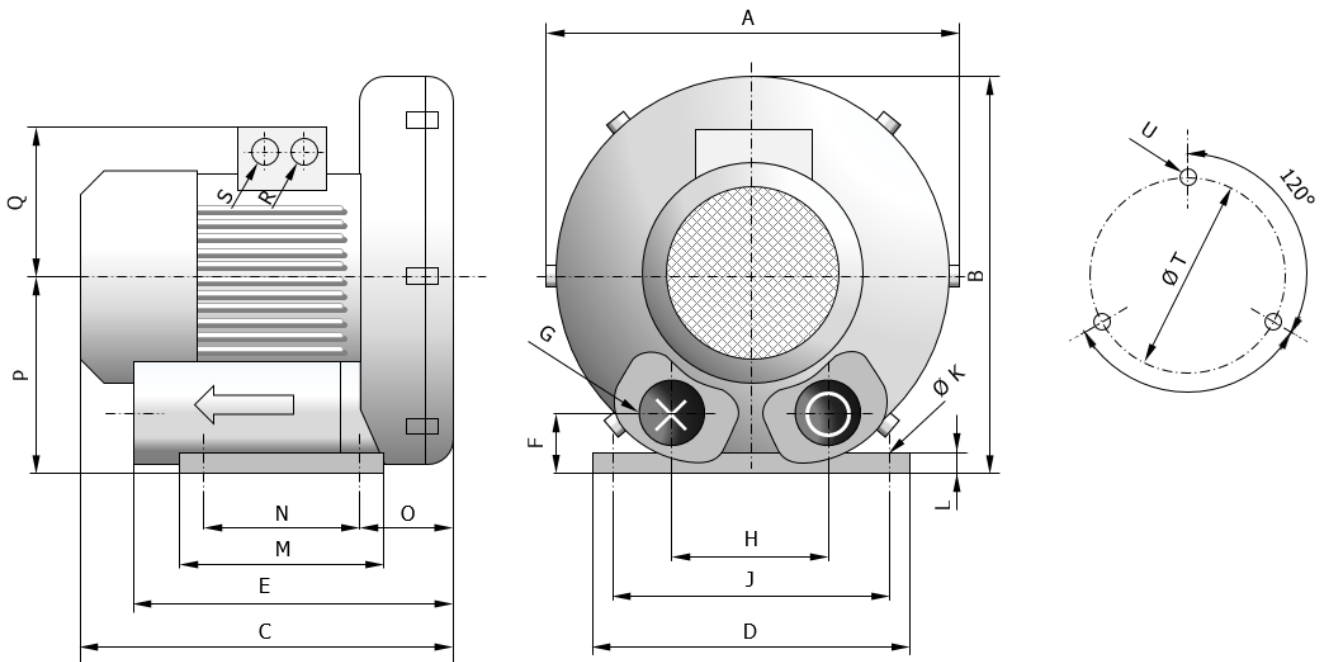
1) Relief valves are available for limiting differential pressure

2) Other voltages are available on request

3)

Type	Hz	V ²⁾	Tol.
ASCT...-1	50	185-225 Δ / 320-390 Y	+/- 5%
	60	200-240 Δ / 345-415 Y	+/- 5%
ASCT...-5	50	500 Δ	+/- 5%
	60	575 Δ	+/- 5%
ASCT...-6	50	200-240 Δ / 345-415 Y	+/- 5%
	60	220-275 Δ / 380-480 Y	+/- 5%
ASCT...-7	50	345-415 Δ / 600-720 Y	+/- 5%
	60	380-480 Δ / 660-720 Y	+/- 5%
ASCA...-1	50	230	+/- 5%
	60	230	+/- 5%
ASCS...-5	50	115/230	+/- 5%
	60	115/230	+/- 5%

Dimensions



Dimensions in mm

Type	A	B	C	D	E	F	G	H	J	K	L	M	N	O	P	Q	R	S	T	U
ASC0070-1MA200-1	213	225	242	172	200	33	G 1"	76	155	8,5	2	101	80	52	114	101	M16 x 1,5	M25 x 1,5	126	M6 x 20
ASC0070-1MT200-6	213	225	242	172	200	33	G 1"	76	155	8,5	2	101	80	52	114	101	M16 x 1,5	M25 x 1,5	126	M6 x 20
ASC0070-1MA250-1	213	225	242	172	200	33	G 1"	76	155	8,5	2	101	80	52	114	101	M16 x 1,5	M25 x 1,5	126	M6 x 20
ASC0070-1MT250-6	213	225	242	172	200	33	G 1"	76	155	8,5	2	101	80	52	114	101	M16 x 1,5	M25 x 1,5	126	M6 x 20

AIRTECH[®]
EUROPE



Industry and Application

- **Your distinct application**
- Pneumatic Conveying Industry
- Electrical and Electronic
- Engineering
- Plastic Industry
- Material Handling
- Packaging
- Environmental Engineering
- Food & Beverage
- Printing & Paper
- Wood Working
- Textile
- Medical

AIRTECH[®]
EUROPE

AIRTECH Europe GmbH
Pfaffenpfad 5
D – 97440 Werneck



HPE Pressure & Vacuum Technology
C. dels Amics d'Argentona, 40
ES – 08310 Argentona (Barcelona)