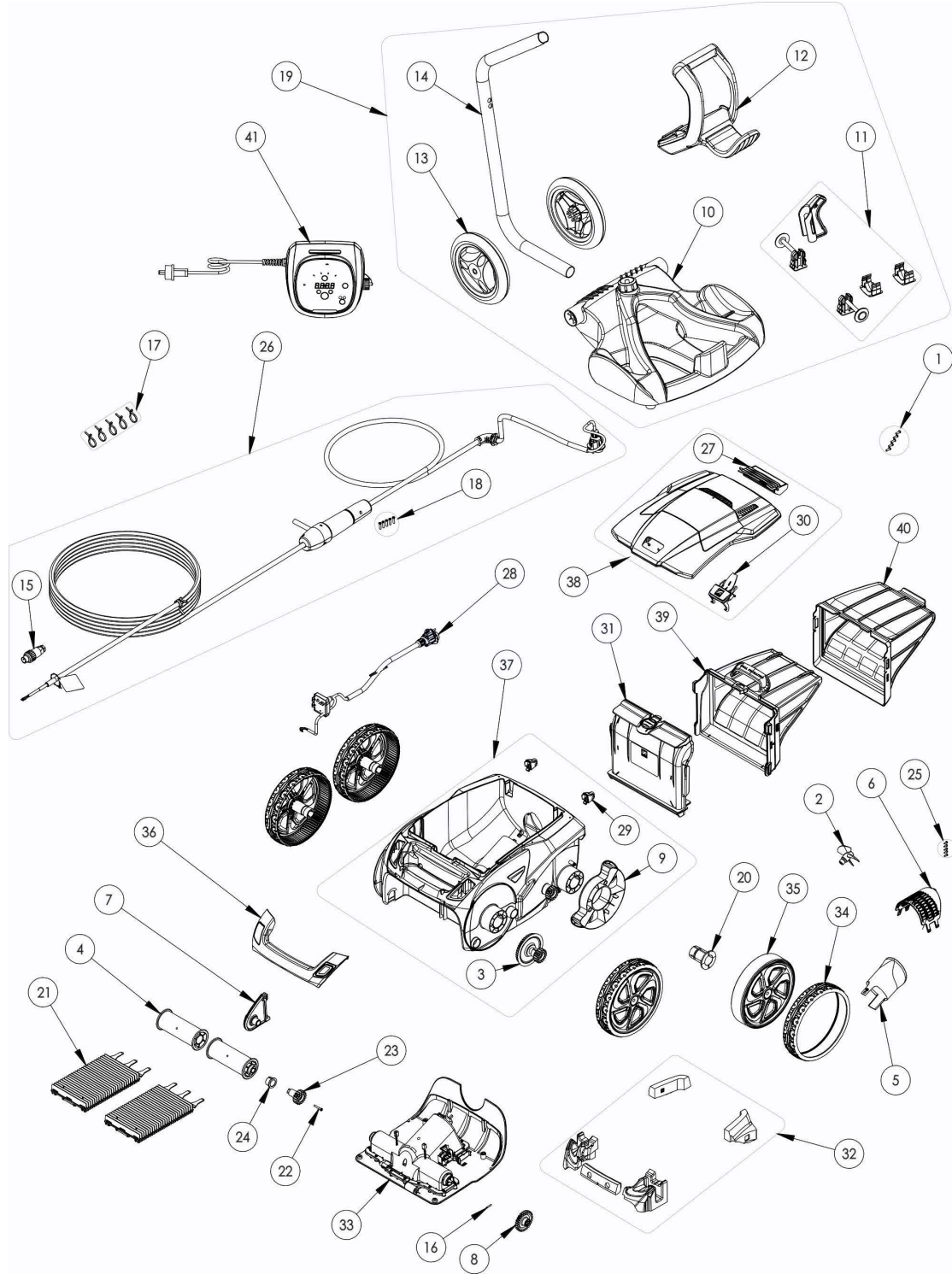


CODE **WR000296**

DESCRIPTION: **RA 6900 IQ**



| POS | CODE     | DESCRIPTION             | QUANTITY | POS | CODE     | DESCRIPTION                      | QUANTITY |
|-----|----------|-------------------------|----------|-----|----------|----------------------------------|----------|
| 1   | R0516700 | SCREWS 4*12 MM (X5)     | 1        | 16  | R0567800 | MOTOR BLOCK SHAFT PIN (SET OF 5) | 1        |
| 2   | R0517000 | PROPELLER               | 1        | 17  | R0567900 | FLOATING CABLE CLAMP (SET OF 5)  | 1        |
| 3   | R0517200 | TRANSMISSION            | 4        | 18  | R0608500 | SCREW 4*16MM (set of 5)          | 1        |
| 4   | R0517400 | BRUSH ROLLER            | 1        | 19  | R0609100 | TROLLEY KIT V                    | 1        |
| 5   | R0517500 | FLOW OUTLET             | 1        | 20  | R0636700 | WHEEL BUSHING ZODIAC             | 4        |
| 6   | R0517600 | MOTOR SCREEN            | 1        | 21  | R0638800 | BRUSH (SET OF 2)                 | 1        |
| 7   | R0518700 | ROLLER SUPPORT          | 1        | 22  | R0638900 | SCREW 4*25 MM (SET OF 5)         | 1        |
| 8   | R0518800 | DRIVE GEAR (SET OF 2)   | 1        | 23  | R0639000 | 17 GEAR (*2)                     | 1        |
| 9   | R0540300 | COVER WHEELS PROTECTION | 2        | 24  | R0639100 | OUTER BEARING (*2)               | 1        |
| 10  | R0564800 | TROLLEY BASE            | 1        | 25  | R0639200 | SCREW 2.9*9.5 MM (SET OF 5)      | 1        |
| 11  | R0564900 | TROLLEY ACCESSORIES     | 1        | 26  | R0713200 | FLOATING CABLE 25M               | 1        |
| 12  | R0565000 | TROLLEY HANDLE          | 1        | 27  | R0863200 | REAR FLOAT ASSEMBLY              | 1        |
| 13  | R0565100 | TROLLEY WHEELS (*2)     | 1        | 28  | R0863300 | SENSOR BLOCK ASSEMBLY            | 1        |



# PARTS BREAKDOWN

CODE **WR000296**

DESCRIPTION: **RA 6900 IQ**

|    |          |                                      |   |    |          |                              |   |
|----|----------|--------------------------------------|---|----|----------|------------------------------|---|
| 14 | R0565200 | TROLLEY TUBE                         | 1 | 29 | R0864900 | ROLLER, 2PK                  | 1 |
| 15 | R0565600 | FLOATING CABLE PLUG                  | 1 | 30 | R0865000 | COVER LATCH                  | 1 |
| 31 | R0865100 | FILTER CANISTER INLET HOUSING        | 1 | 37 | R0865800 | MAIN BODY HOUSING, NAVY BLUE | 1 |
| 32 | R0865200 | FLOATS                               | 1 | 38 | R0865900 | COMPLETE COVER               | 1 |
| 33 | R0865400 | MOTOR BLOCK TYPE 2                   | 1 | 39 | R0913300 | FILTER 150 $\mu$ - DUAL      | 1 |
| 34 | R0865500 | TIRE, BLACK R7021                    | 4 | 40 | R0913400 | OVER FILTER 60 $\mu$ - DUAL  | 1 |
| 35 | R0865600 | RIM BLACK R7021 AND SILVER           | 4 | 41 | R0928100 | CONTROL BOX TYPE 6           | 1 |
| 36 | R0865700 | HANDLE WITH WINDOW, NAVY BLUE/SILVER | 1 |    |          |                              |   |