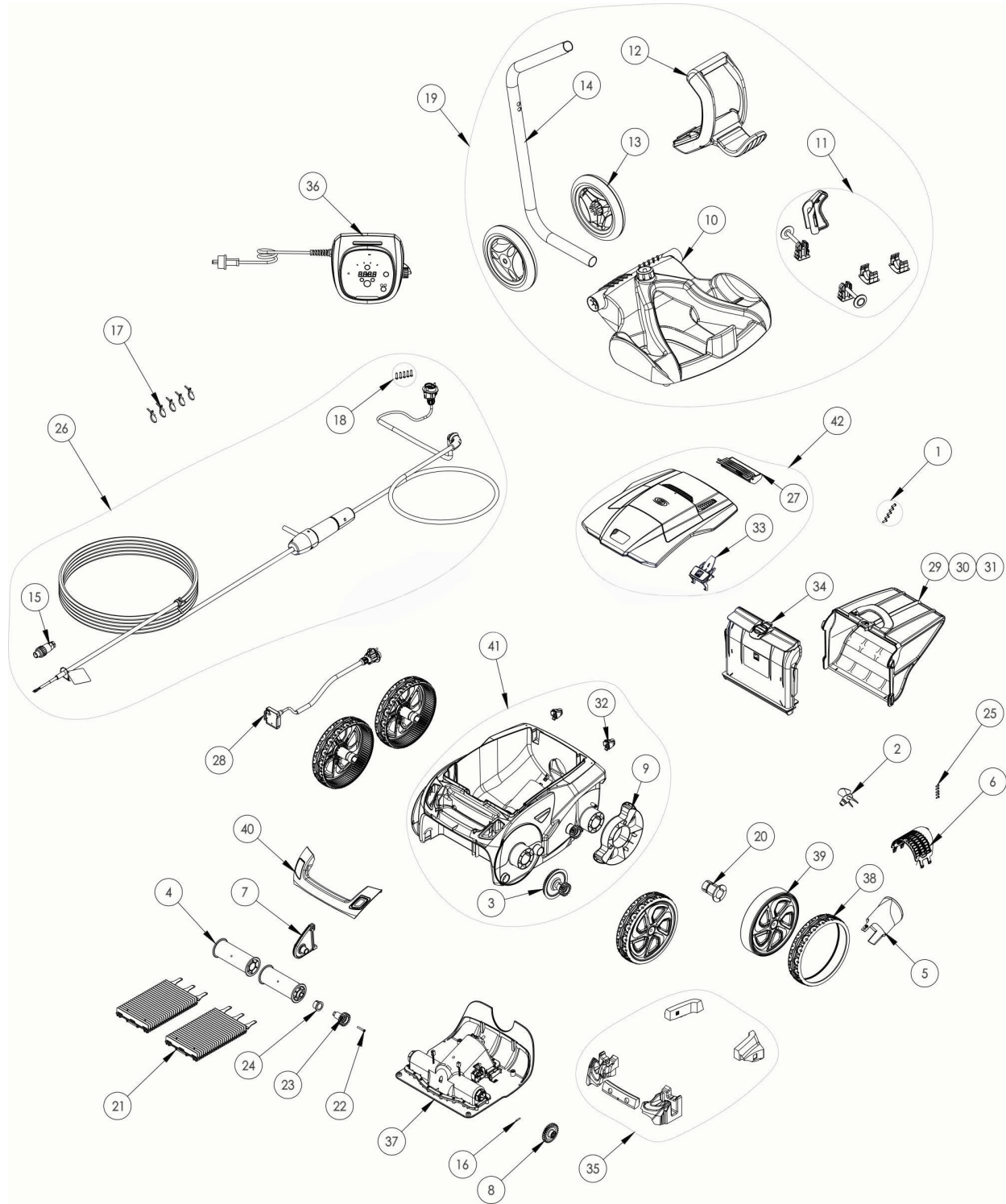


CODE **WR000219**

DESCRIPTION: **RA 6570 IQ**



| POS | CODE | DESCRIPTION | QUANTITY | POS | CODE | DESCRIPTION | QUANTITY |
|-----|----------|-------------------------|----------|-----|----------|----------------------------------|----------|
| 1 | R0516700 | SCREWS 4*12 MM (X5) | 1 | 16 | R0567800 | MOTOR BLOCK SHAFT PIN (SET OF 5) | 1 |
| 2 | R0517000 | PROPELLER | 1 | 17 | R0567900 | FLOATING CABLE CLAMP (SET OF 5) | 1 |
| 3 | R0517200 | TRANSMISSION | 4 | 18 | R0608500 | SCREW 4*16MM (set of 5) | 1 |
| 4 | R0517400 | BRUSH ROLLER | 1 | 19 | R0609100 | TROLLEY KIT V | 1 |
| 5 | R0517500 | FLOW OUTLET | 1 | 20 | R0636700 | WHEEL BUSHING ZODIAC | 4 |
| 6 | R0517600 | MOTOR SCREEN | 1 | 21 | R0638800 | BRUSH (SET OF 2) | 1 |
| 7 | R0518701 | ROLLER SUPPORT WHITE | 1 | 22 | R0638900 | SCREW 4*25 MM (SET OF 5) | 1 |
| 8 | R0518800 | DRIVE GEAR (SET OF 2) | 1 | 23 | R0639000 | 17 GEAR (*2) | 1 |
| 9 | R0540300 | COVER WHEELS PROTECTION | 2 | 24 | R0639100 | OUTER BEARING (*2) | 1 |
| 10 | R0564800 | TROLLEY BASE | 1 | 25 | R0639200 | SCREW 2.9*9.5 MM (SET OF 5) | 1 |
| 11 | R0564900 | TROLLEY ACCESSORIES | 1 | 26 | R0726600 | SWIVEL FLOATING CABLE KIT 18M | 1 |
| 12 | R0565000 | TROLLEY HANDLE | 1 | 27 | R0863200 | REAR FLOAT ASSEMBLY | 1 |
| 13 | R0565100 | TROLLEY WHEELS (*2) | 1 | 28 | R0863300 | SENSOR BLOCK ASSEMBLY | 1 |



PARTS BREAKDOWN

CODE **WR000219**

DESCRIPTION: **RA 6570 IQ**

| | | | | | | | |
|----|----------|-------------------------------|---|----|----------|----------------------------|---|
| 14 | R0565200 | TROLLEY TUBE | 1 | 29 | R0863500 | ULTRA FINE FILTER 60μ | 1 |
| 15 | R0565600 | FLOATING CABLE PLUG | 1 | 30 | R0863600 | FINE FILTER 100μ | 1 |
| 31 | R0863700 | LARGE FILTER 200μ | 1 | 37 | R0865400 | MOTOR BLOCK TYPE 2 | 1 |
| 32 | R0864900 | ROLLER, 2PK | 1 | 38 | R0865500 | TIRE, BLACK R7021 | 4 |
| 33 | R0865000 | COVER LATCH | 1 | 39 | R0865600 | RIM BLACK R7021 AND SILVER | 4 |
| 34 | R0865100 | FILTER CANISTER INLET HOUSING | 1 | 40 | R0868100 | HANDLE, WHITE | 1 |
| 35 | R0865200 | FLOATS | 1 | 41 | R0867900 | MAIN HOUSING WHITE | 1 |
| 36 | R0867300 | CONTROL BOX, TYPE 5 | 1 | 42 | R0868000 | COMPLETE COVER WHITE | |