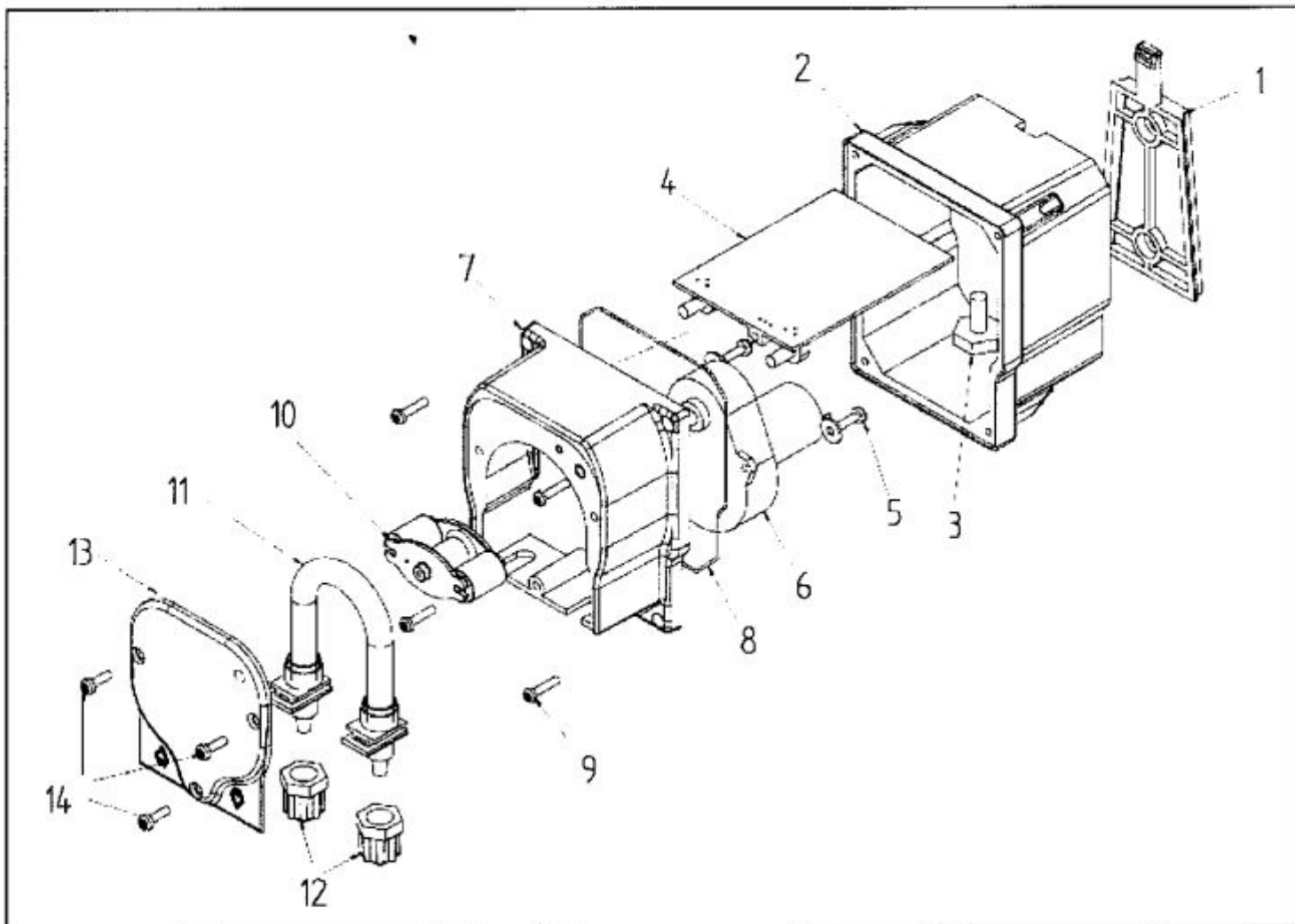


**PUMP EXPLODED VIEW**



Ref.	Description
1	Mounting bracket for wall installation of the pump
2	Case of the peristaltic pump
3	Cable gland for power cable
4	Electronic board
5	Screw and plane washer
6	Motor
7	Head of peristaltic pump
8	NBR O-ring
9	Self-tapping screw
10	Complete roller-holder
11	Internal peristaltic tube
12	Threaded nuts
13	Transparent plastic cover
14	Fixing screws of transparent cover

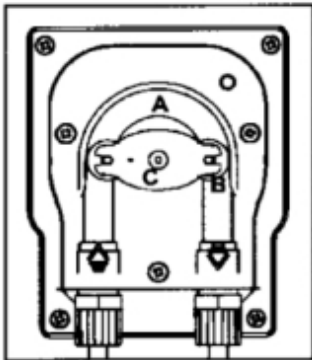
## PACKING LIST

The EFka105 pump is supplied complete with:

- 1) Instruction manual
- 2) Mounting bracket for wall installation
- 3) Power cable, 2.5 m
- 4) Standard kit, including PVC Crystal suction tube (2 m), PE head tube (2 m), foot filter and injection valve with 1/2" connection

## INTRODUCTION AND PRINCIPLE OF OPERATIONS

The EFka105 are a series of peristaltic pumps with fixed flow rate, of small size and easy installation and maintenance, designed for wall mounting. These pumps are suitable for many applications, such as the chemical industry, food processing, disinfection systems and pools.



The principle of operation of the peristaltic pumps is based on pressure and subsequent release of the inner tube (A) by the roller (B) mounted on the roller-holder (C), which is driven by the motor.

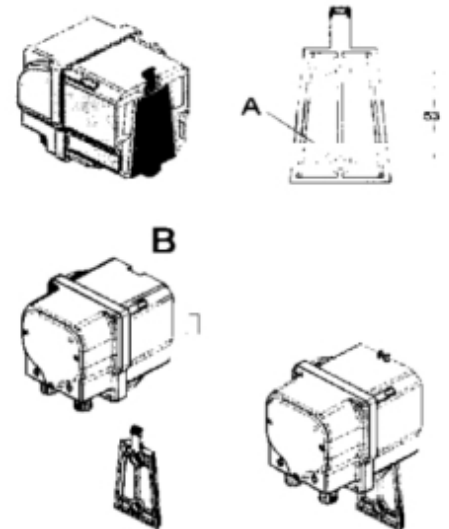
The dual action of pressure and release of the tube generates a suction force along the tube itself, which primes the liquid and drives it to the injection line.

The flow rate depends on the speed of the motor and the section of the tube.

## INSTALLATION

For the wall installation of the pump, drill 2 holes aligned vertically at a distance of 53 mm on the vertical support to which you want to attach the pump, then fix the bracket using the screws and stoppers provided.




Attach the pump to the bracket and ensure that the installation is stable. See also Figure.



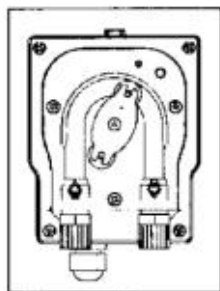
## TECHNICAL DATA

Materials	Case: 30% glass-fibre reinforced PP
	Front panel: Polycarbonate
	Roller-holder: PBT
	Rollers: Delrin (self-lubricant)
	Internal tube: Santoprene
	Connexions: PP
External tube	4x6 mm
Power supply	230 Vac (other voltages on request)
Flow Rate	4 l/h
Pressure	1 bar
Environment	max 40°C / min temperature depends on the dosed liquid
Protection rate	IP65
Dimensions	H 124.5 x L 84.5 x 106 mm
Weight	approx. 700 g

**Replacement of the peristaltic tube:**

	<p>Unscrew the two front screw and remove the transparent cover. Remove the old tube first unlocking the fitting on the left and turning the roller-holder as indicated by the arrow in the figure, so as to free the tube to the fitting on the right.</p>
	<p>Insert the left fitting into the new pipe, in its place, ensuring that the rounded side is positioned inwards. Then turn the roller-holder clockwise, so that the tube is inserted in its seat.</p>
	<p>Insert the right fitting in its place and secure the transparent cover by tightening the two front screws.</p>

**Storage of the pump after use:**



Before storing the pump, dose clean water to rinse the tube. Place the roller-holder as shown in the figure, turning it clockwise.

**MECHANICAL DIMENSIONS**

All dimensions in the figure are in mm.

