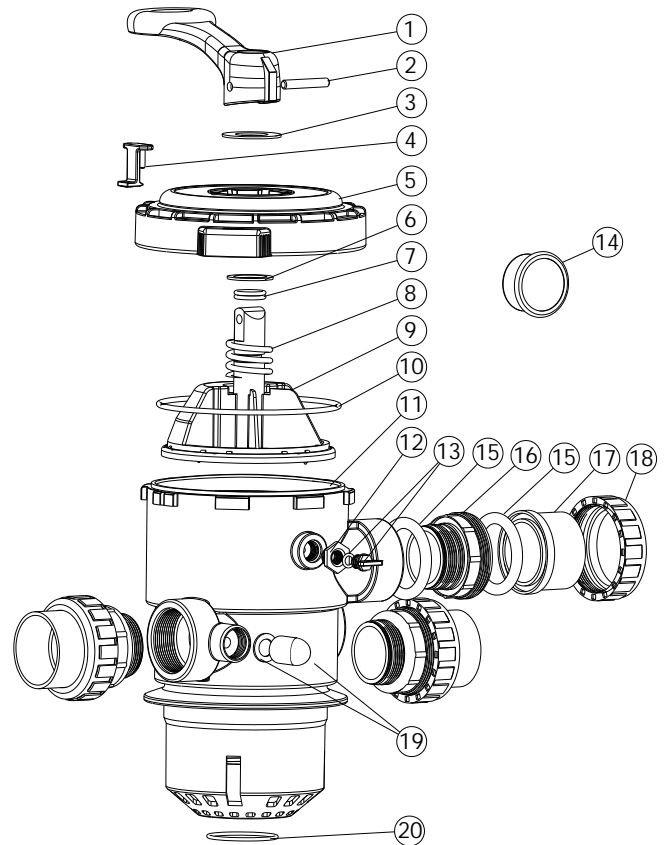


2.0 " Clamp Type Multiport Valve

PARTS OF VALVE

| Item | Part No. | Description | Qty |
|------|-----------|--|-----|
| 1 | 430135070 | Handle (Red) | 1 |
| 2 | 03018008 | Pin for Handle | 1 |
| 3 | 01181027 | Washer for Handle | 1 |
| 4 | 01181028 | Defend Lock | 1 |
| 5 | 01020009 | 2.0" Lid | 1 |
| 6 | 01181002 | Washer for Spring | 1 |
| 7 | 02011022 | O-Ring for Valve Rotor | 2 |
| 8 | 03014014 | Spring for Valve | 1 |
| 9 | 89280805 | 2.0" Valve Rotor with Spider Gasket | 1 |
| 10 | 02010003 | O-Ring for Lid | 1 |
| 11 | E190213 | 2.0" Body with Diffuser | 1 |
| 12 | 89280120 | Drain Plug Fitting with O-ring | 1 |
| 13 | 89021307 | Drain Plug with O-Ring | 1 |
| 14 | 06011029 | Oil Pressure Gauge with O-Ring (40Psi) | 1 |
| 14 | 117043348 | Pressure Gauge with O-Ring (100Psi) | 1 |
| 15 | 02020016 | O-Ring | 6 |
| 16 | 01013031 | 2.0" Connector (Black) | 3 |
| 16 | 01051033 | 2.0" Connector (White) | 3 |
| 17 | 01171154 | 2.0" Union (A/E) | 3 |
| 18 | 01013032 | 2.0" Union Nut (Black) | 3 |
| 18 | 01051032 | 2.0" Union Nut (White) | 3 |
| 19 | 430200944 | Sight Glass with O-Ring | 1 |
| 20 | 02011005 | O-Ring for Diffuser | 1 |



NOTE:

Item 1-13, 19, 20 for Valve only (88281506).

Item 1-20 for Valve (88281551).

WARNING



TURN PUMP OFF BEFORE CHANGING VALVE POSITION.



THIS FILTER OPERATES UNDER HIGH PRESSURE. WHEN ANY PART OF THE CIRCULATING SYSTEM (e.g., CLAMP, PUMP, FILTER, VALVES, ETC.) IS SERVICED, AIR CAN ENTER THE SYSTEM AND BECOME PRESSURIZED. PRESSURIZED AIR CAN CAUSE THE LID OR VALVE TO BE BLOWN OFF WHICH CAN RESULT IN SEVERE INJURY, DEATH, OR PROPERTY DAMAGE



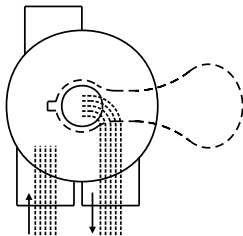
TO PREVENT DAMAGE TO THE PUMP AND FOR PROPER OPERATION OF THE SYSTEM, CLEAN PUMP STRAINER AND SKIMMER BASKETS REGULARLY.

FUNCTIONS OF VALVE POSITIONS

| Valve Position | Function |
|----------------|---|
| FILTER | Normal Filtration |
| BACKWASH | Cleaning Filter by reversing the flow |
| RINSE | Used after backwash to flush dirt from valve |
| WASTE | By-passes filter, used for vacuuming to waste or lowering water level |
| RECIRCULATE | By-passes filter for circulating water to pool |
| CLOSED | Shuts off all flow to filter or pool |

FILTER

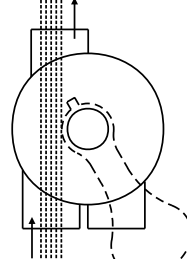
WASTE



IN FLOW OUT FLOW

WASTE

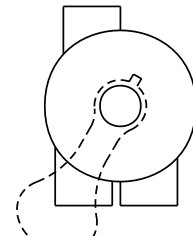
WASTE



IN FLOW OUT FLOW

CLOSED

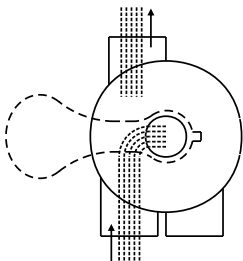
WASTE



IN FLOW OUT FLOW

BACKWASH

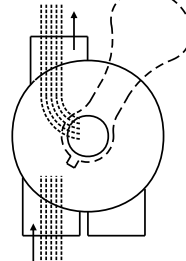
WASTE



IN FLOW OUT FLOW

RINSE

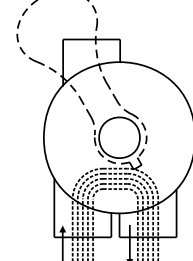
WASTE



IN FLOW OUT FLOW

RECIRCULATE

WASTE



IN FLOW OUT FLOW

GENERAL

- 1) Pipe tap boss provided for optional influent pressure gauge.
- 2) SERVICING VALVE(Stop pump,close gate valve in suction&discharge before proceeding):
 - a) Set handle in filter position.
 - b) Remove cover screws.
 - c) Lift cover and key assembly out.

TO ASSEMBLE:

- d) Place valve key so that wedge opening is at TOP port (handle in Filter psn.). Flat edge of cover screw lug should align with flat edge of body screw lug.
- e) Position cover O'Ring.
- f) Secure assembly to body with cover screws. Tighten cover screws evenly and alternately. Do not over-tighten.