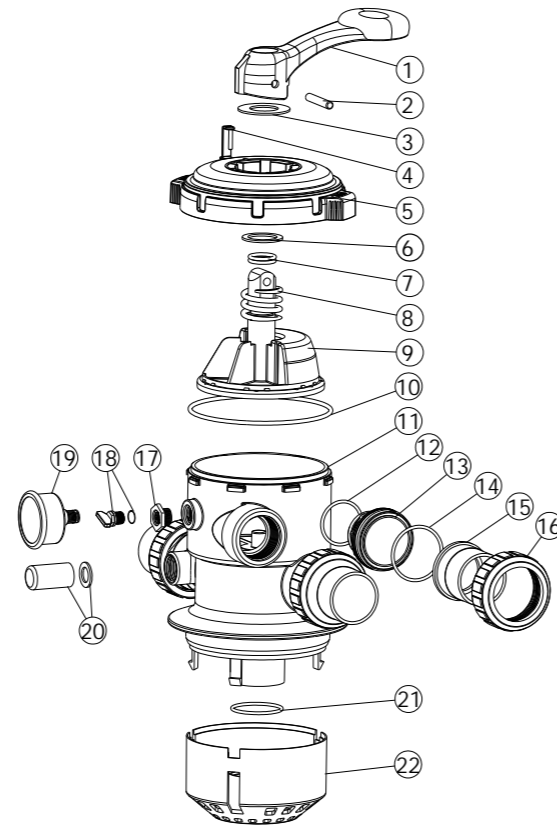


VALVE REPLACEMENT PARTS

Key No.	Part No.	Description	Qty
1	01013003	Handle (Big)	1
2	03018008	Pin for Handle	1
3	01181027	Washer for Handle	1
4	01181029	Defend Lock	1
5	01020003	1.5" Lid	1
6	01181002	Washer for Spring	1
7	02011022	O-Ring for Valve Rotor	2
8	03014001	Spring	1
9	89280701	1.5" Valve Rotor with Spider Gasket	1
10	02010002	O-Ring for Lid	1
11	01020004	1.5" Body	1
12	02020013	O-Ring for 1.5"Connector	3
13	01013015	1.5" Connector (Black)	3
13	01051013	1.5" Connector (White)	3
14	02011003	O-Ring for 1.5" Adaptor	3
15	01171153	1.5" Union (A/E)	3
16	01013017	1.5" Union Nut (Black)	3
16	01051014	1.5" Union Nut (white)	3
17	89280120	Connector for Pressure Gauge with O-Ring	1
18	89021307	Drain Plug with O-Ring	1
19	06021013	Pressure Gauge with O-Ring (40Psi)	1
20	89280104	Sight Glass with O-Ring	1
21	02011001	O-Ring for Diffuser	1
22	01100002	1.5" Diffuser	1

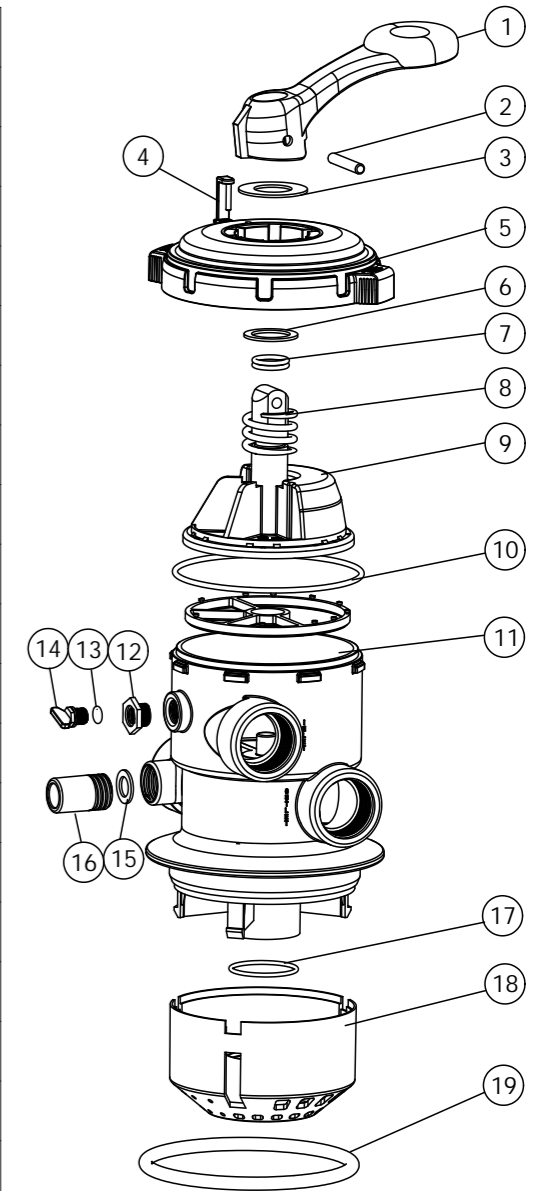


Valve Position	Function
FILTER	Normal Filtration and Vacuuming
BACKWASH	Cleaning Filter by reversing the flow
RINSE	Used after backwash to flush dirt from valve
WASTE	By-passes filter, used for vacuuming to waste or lowering water level
RECIRCULATE	By-passes filter for circulating water to pool
CLOSED	Shuts off all flow to filter or pool

1.5 " Clap Type Multiport Valve for 'Filter Max "

PARTS OF VALVE

Key No .	Part No .	Product Description	Qty
1	01013003	Handle	1
2	03018008	Pin for Handle	1
3	01181027	Washer for Handle	1
4	01181029	Defend Lock	1
5	01020003	1 5 "Lid	1
6	01181002	Washer for Spring	1
7	02011022	O-Ring for 1 5 "Valve Rotor	2
8	03014001	Spring	1
9	89280701	1 5 "Valve Rotor with Spider Gasket	1
10	02010002	O-Ring for Lid	1
11	01020004	1 5 "Body	1
12	01111048	Connector for pressure gauge stopper	1
13	02020014	O-Ring for Drain Plug	1
14	01111017	Drain Plug	1
15	02011008	O-Ring for Sight Glass	1
16	01041004	Sight Glass	1
17	02011001	O-Ring for Diffuser	1
18	01100002	1 5 "Diffuser	1
19	02010007	O-Ring	1



WARNING

- ⚠️ TURN PUMP OFF BEFORE CHANGING VALVE POSITION.
- ⚠️ THIS FILTER OPERATES UNDER HIGH PRESSURE. WHEN ANY PART OF THE CIRCULATING SYSTEM (e.g., CLAMP, PUMP, FILTER, VALVES, ETC.) IS SERVICED, AIR CAN ENTER THE SYSTEM AND BECOME PRESSURIZED. PRESSURIZED AIR CAN CAUSE THE LID OR VALVE TO BE BLOWN OFF WHICH CAN RESULT IN SEVERE INJURY, DEATH, OR PROPERTY DAMAGE
- ⚠️ TO PREVENT DAMAGE TO THE PUMP AND FOR PROPER OPERATION OF THE SYSTEM, CLEAN PUMP STRAINER AND SKIMMER BASKETS REGULARLY.