



RHINO
POOLS

**“The real problem of
leisure time is how to
keep others from
using yours.”**

Arthur Lacey





CONTENT

- 6** ABOUT US
- 8** TECHNOLOGY
- 10** INSTALLATION
- 12** POOL RANGE
- 14** COLOR RANGE
- 16** JOY
- 18** JOY PRO
- 20** EUPHORIA
- 22** FLASH | GRAVITY
- 26** CORSICA | COSTA RICA
- 30** HALO 8 | HALO 9
- 34** MONACO 650 | 750 | 850 | 1000
- 38** ANTIBES

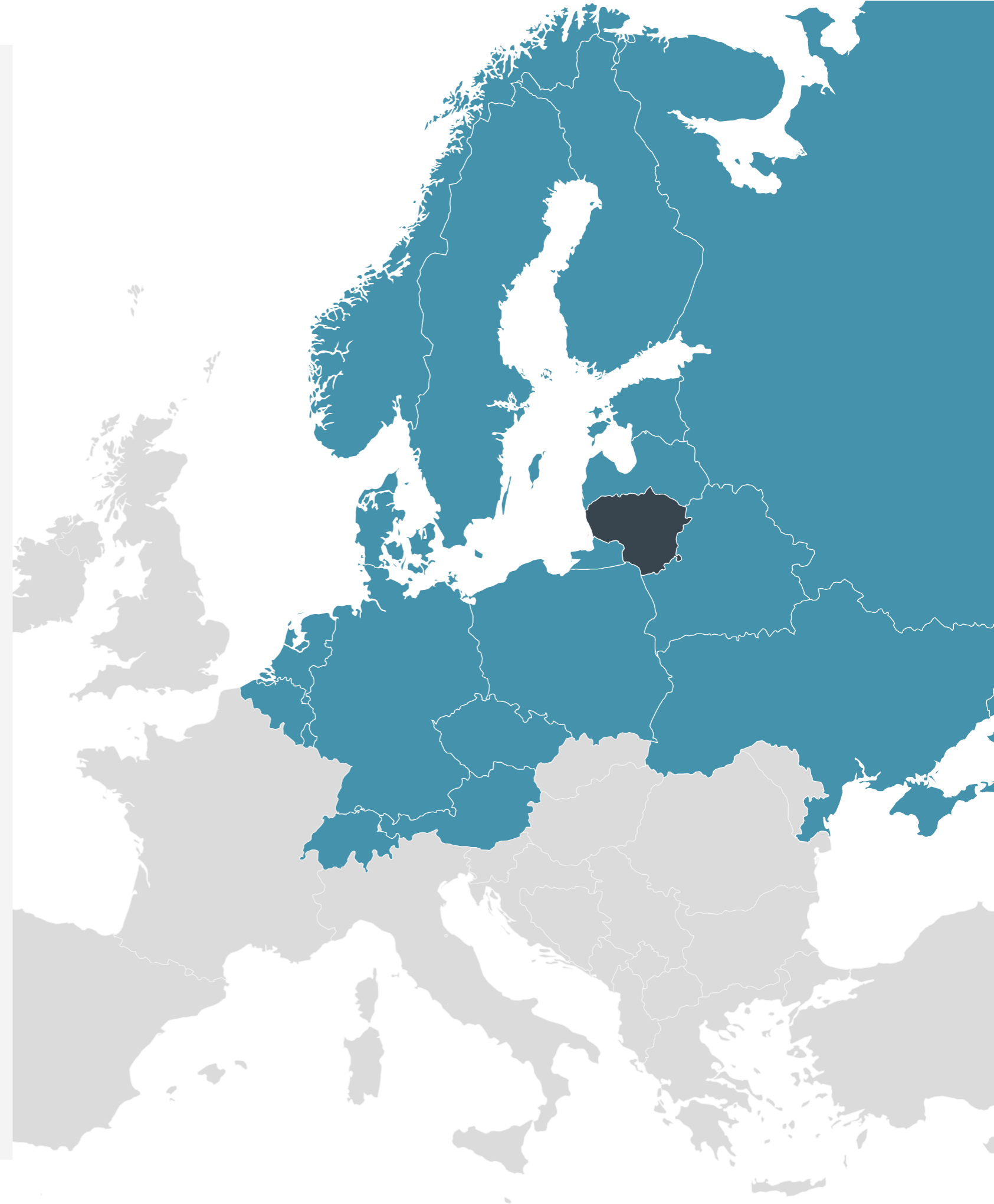
ABOUT US

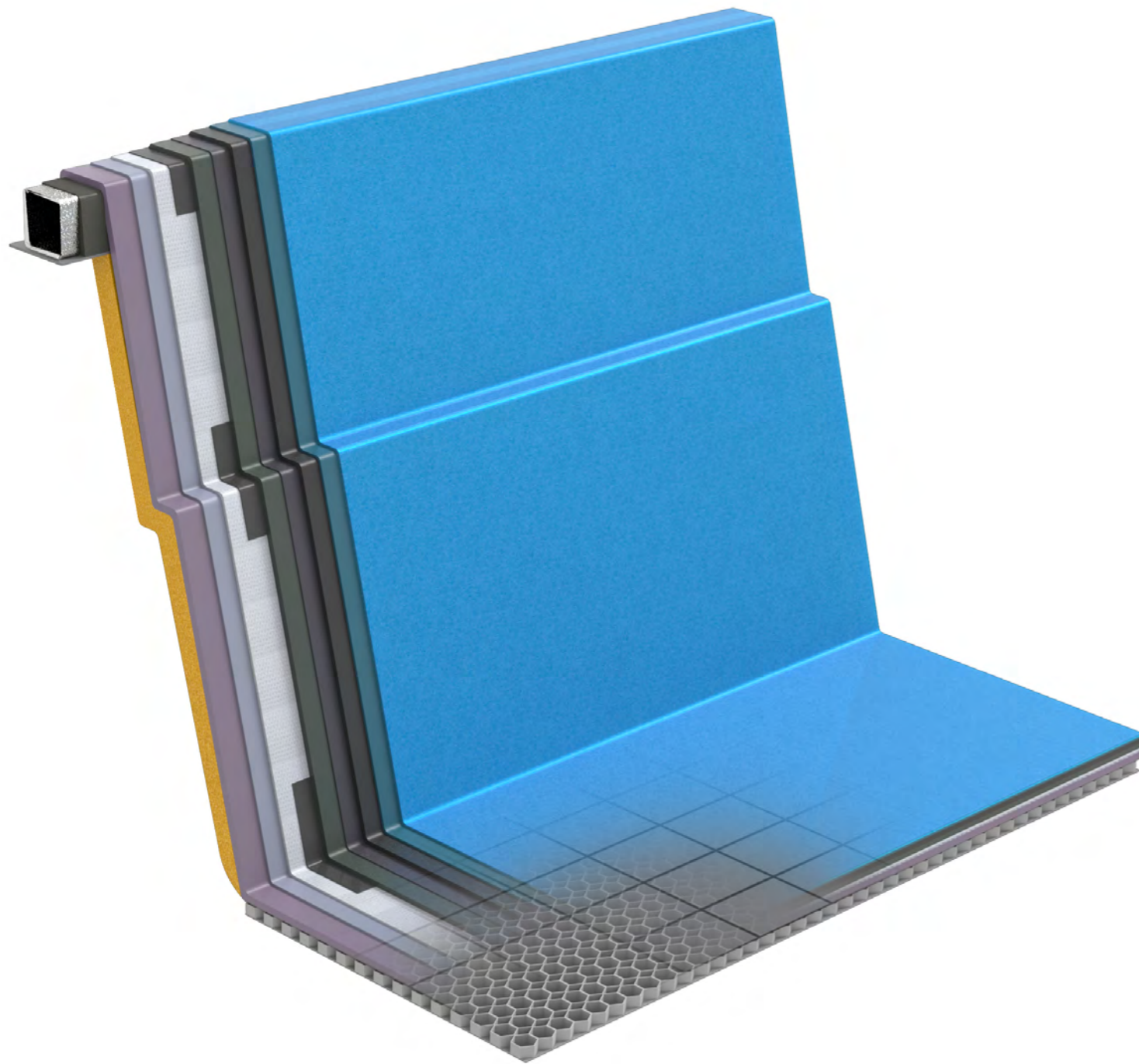
Rhino Pools is subsidiary company and belongs to a group of companies that have been working with fiberglass since 1998.

SEPARATE PRODUCTION LINES WE ARE WORKING ON:

- Mold and model manufacturing for other fiberglass and plastic industry companies
- Fiberglass and plastic products in small and large quantities by using manual laminating and vacuum laminating with vacuum film or back-sided molds

Our pool factory produces over 700 pools per year, which are sold through the dealer network throughout Europe, as well as in the East and the Middle East. Today we can proudly say that we have more than 10,000 happy clients enjoying our pools.





TECHNOLOGY

Our pools are made to last.

Production starts with highest quality materials & manual fiberglass forming.

10-layer wall structure, extra ceramic and fiberglass reinforcement layers, double bottom and sprayed-over foam insulation guarantees a long lasting product, which is leakproof forever!

- **GELCOAT LAYER 1** - first color tone with UV & osmose protection
- **GELCOAT LAYER 2** - second color tone with additional osmosis protection properties
- **VINYLESTER GELCOAT LAYER** - provides maximum resistance to chemicals, solvents
- **VINYLESTER GELCOAT LAYER 2** - reinforced by fiber-glass
- **VINYLESTER GELCOAT LAYER 3** - has special ceramic reinforcement
- **LAMINATED STEEL BEAM** - for perimeter stability and rigidity
- **STRUCTURAL FIBERGLASS LAYER 1**
- **STRUCTURAL FIBERGLASS LAYER 2**
- **STRUCTURAL FIBERGLASS LAYER 3**
- **PU FOAM** - thermal insulation layer
- **STRUCTURAL HONEYCOMB LAYER** - extra protection for pool flooring

The production of fiberglass products started backin 1998 and we have developed extensive experience over the last 20 years.

All pools pass strict quality control and we can proudly guarantee that Rhino pools are leakproof for life.



INSTALLATION

Rhino Pools is offering a plug and play solution to every customer.

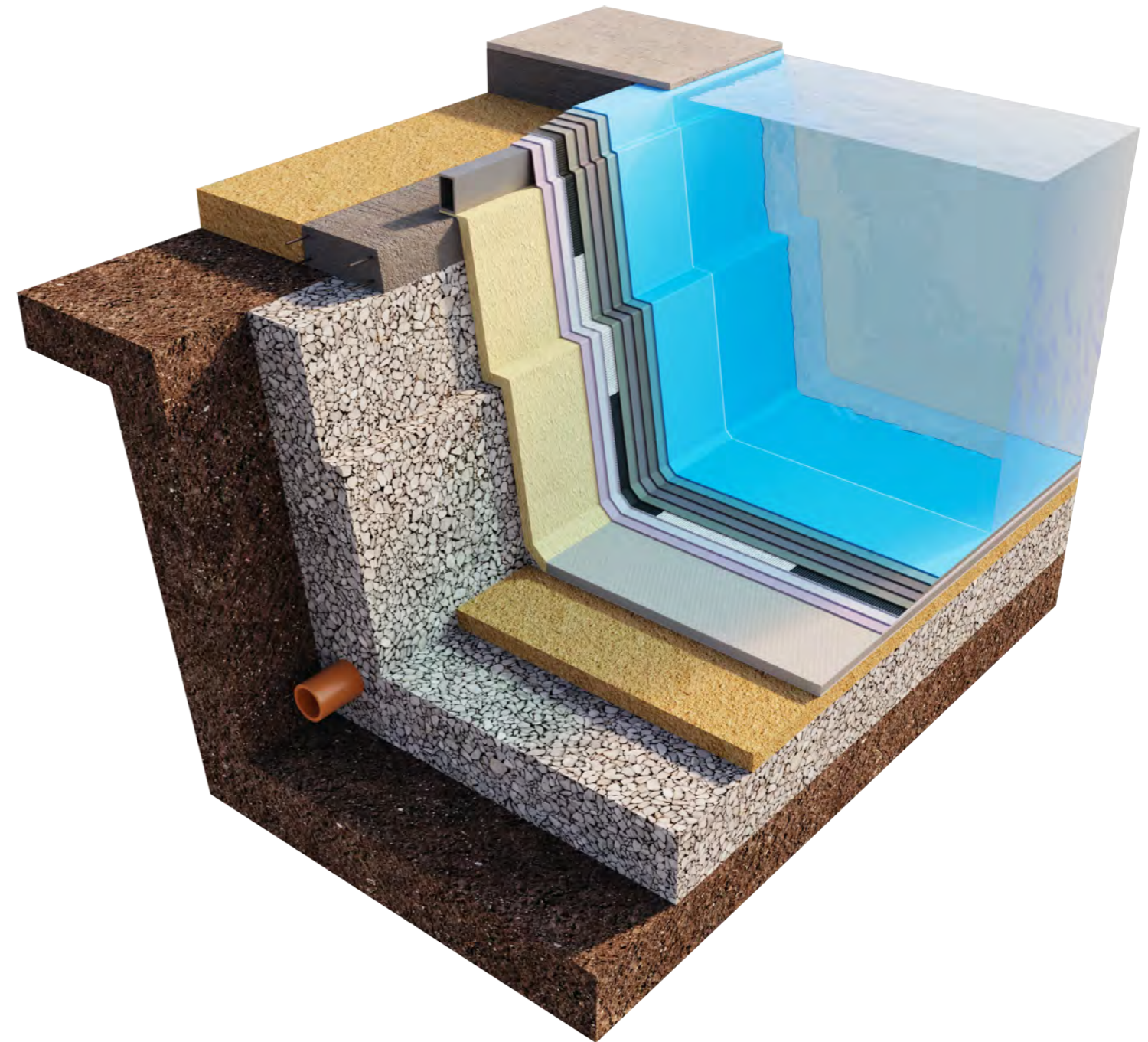
Our special designed pool structure allows the pool to be installed with minimum intervention in the garden.

Fast and easy installation of the pool is possible only because of special designed pool structure of Rhino Pools Ceramic core, special Honeycomb bottom structure, high density PU foam, special Mat-combined structure.

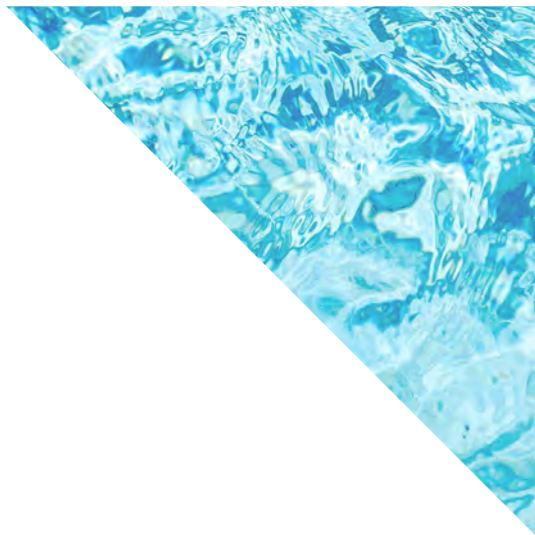
Only gravel is used to backfill the pool.
Both in the bottom and sides!

EVERY POOL HAS ITS OWN HIDDEN FEATURES:

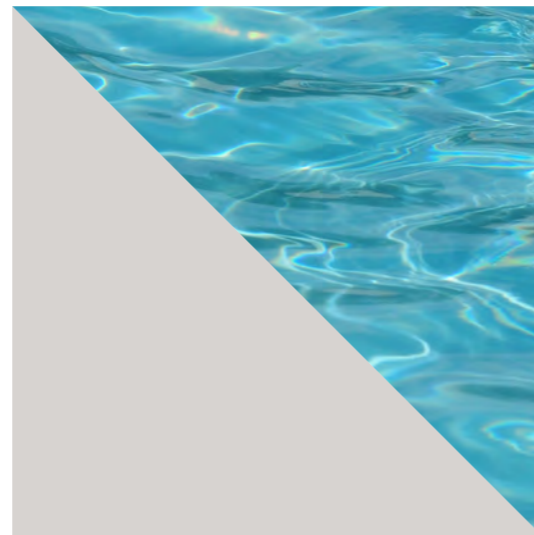
- Anti-slip steps
 - Adjusted step height
 - Slatted cover guidelines
 - Uninterrupted swimming channel
 - Special place for main drain
 - Backwall integrated seats
-



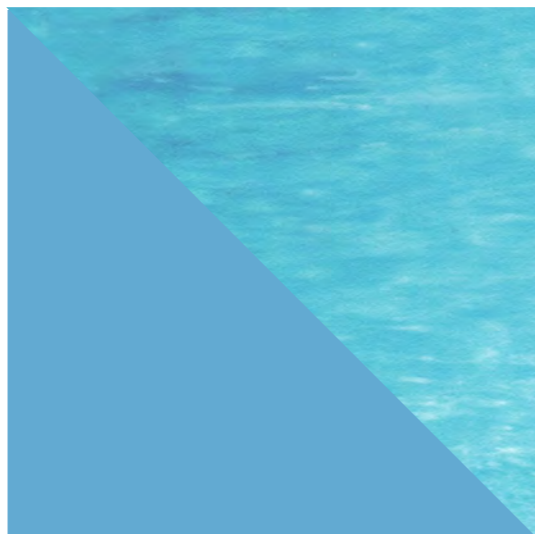
STANDARD COLOR RANGE



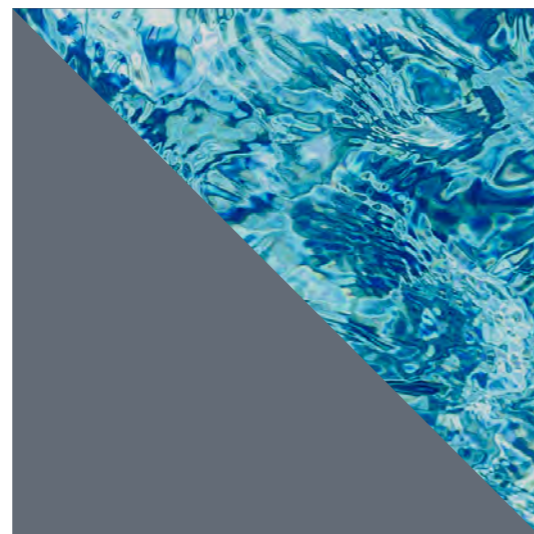
WHITE FROST



STEEL GRAY



AQUA BLUE

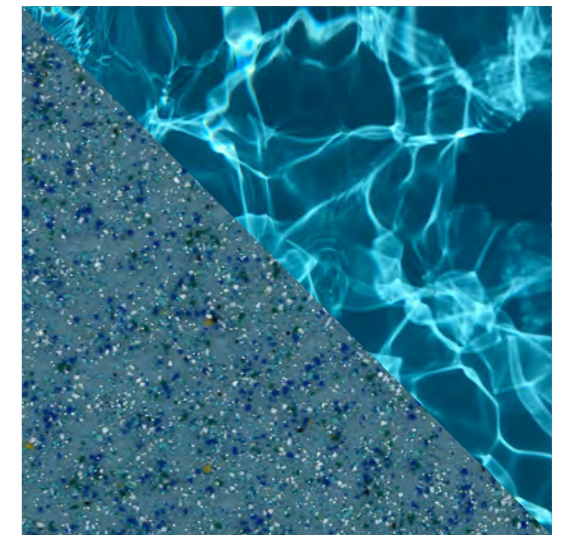


SHADOW GRAY

3D COLOR RANGE



NAVY PEARL



OCEAN PEARL

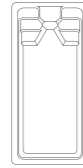


REEF PEARL

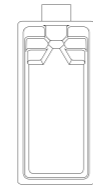


BEACH PEARL

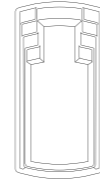
POOL RANGE



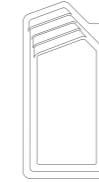
JOY



JOY PRO



EUPHORIA



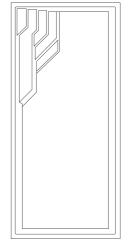
FLASH



GRAVITY

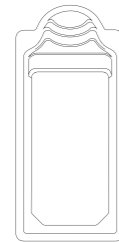


CORSICA



COSTA RICA

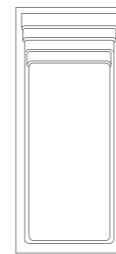
	JOY	JOY PRO	EUPHORIA		FLASH	GRAVITY	CORSICA	COSTA RICA
OUTSIDE LENGTH	5.50 m	6.10 m	6.00 m	OUTSIDE LENGTH	6.00 m	8.20 m	7.40 m	8.00 m
OUTSIDE WIDTH	2.60 m	2.60 m	3.00 m	OUTSIDE WIDTH	3.00 m	3.70 m	3.70 m	3.70 m
INSIDE LENGTH	5.27 m	5.27 m	5.77 m	INSIDE LENGTH	5.63 m	7.85 m	7.00 m	7.67 m
INSIDE WIDTH	2.37 m	2.37 m	2.80 m	INSIDE WIDTH	2.65 m	3.15 m	3.31 m	3.37 m
DEPTH	1.40 m	1.40 m	1.45 m	DEPTH	1.45 m	1.55 m	1.50 m	1.50 m
SURFACE AREA	12.33 m ²	12.33 m ²	15.46 m ²	SURFACE AREA	13.60 m ²	22.80 m ²	23.04 m ²	25.63 m ²
VOLUME	12.14 m ³	12.14 m ³	15.56 m ³	VOLUME	13.40 m ³	24.20 m ³	28.72 m ³	28.79 m ³
WEIGHT	420 kg	580 kg	550 kg	WEIGHT	500 kg	820 kg	840 kg	920 kg



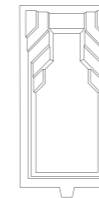
HALO 8



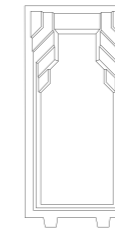
HALO 9



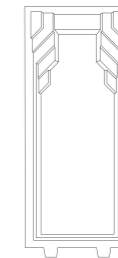
ANTIBES



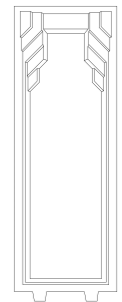
MONACO 650



MONACO 750



MONACO 850



MONACO 1000

	HALO 8	HALO 9	ANTIBES		MONACO 650	MONACO 750	MONACO 850	MONACO 1000
OUTSIDE LENGTH	8.00 m	9.50 m	8.32 m	OUTSIDE LENGTH	6.50 m	7.50 m	8.50 m	10.00 m
OUTSIDE WIDTH	3.70 m	3.70 m	3.70 m	OUTSIDE WIDTH	3.30 m	3.70 m	3.70 m	3.70 m
INSIDE LENGTH	7.66 m	9.15 m	8.00 m	INSIDE LENGTH	6.25 m	7.18 m	8.18 m	9.68 m
INSIDE WIDTH	3.35 m	3.35 m	3.37 m	INSIDE WIDTH	3.00 m	3.38 m	3.38 m	3.38 m
DEPTH	1.50 m	1.50 m	1.50 m	DEPTH	1.50 m	1.50 m	1.50 m	1.50 m
SURFACE AREA	23.42 m ²	28.41 m ²	26.80 m ²	SURFACE AREA	18.50 m ²	24.40 m ²	27.70 m ²	32.80 m ²
VOLUME	25.40 m ³	31.60 m ³	28.46 m ³	VOLUME	18.60 m ³	25.90 m ³	30.10 m ³	36.30 m ³
WEIGHT	830 kg	1100 kg	940 kg	WEIGHT	630 kg	900 kg	1000 kg	1250 kg

* Pool volume is calculated 10cm below top border, inside and outside dimensions are calculated from the top of the border

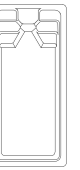


JOY WHITE FROST

HIDDEN FEATURES:

- Anti-slip steps
- Adjusted step height
- Integrated swim jet place
- Special place for main drain
- Can be delivered with regular truck

JOY



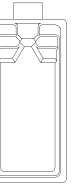
The smallest member of Rhino-Pools team. Double sided steps will allow the pool to fit any garden. Centered first step is designed to fit most of the swim jets.



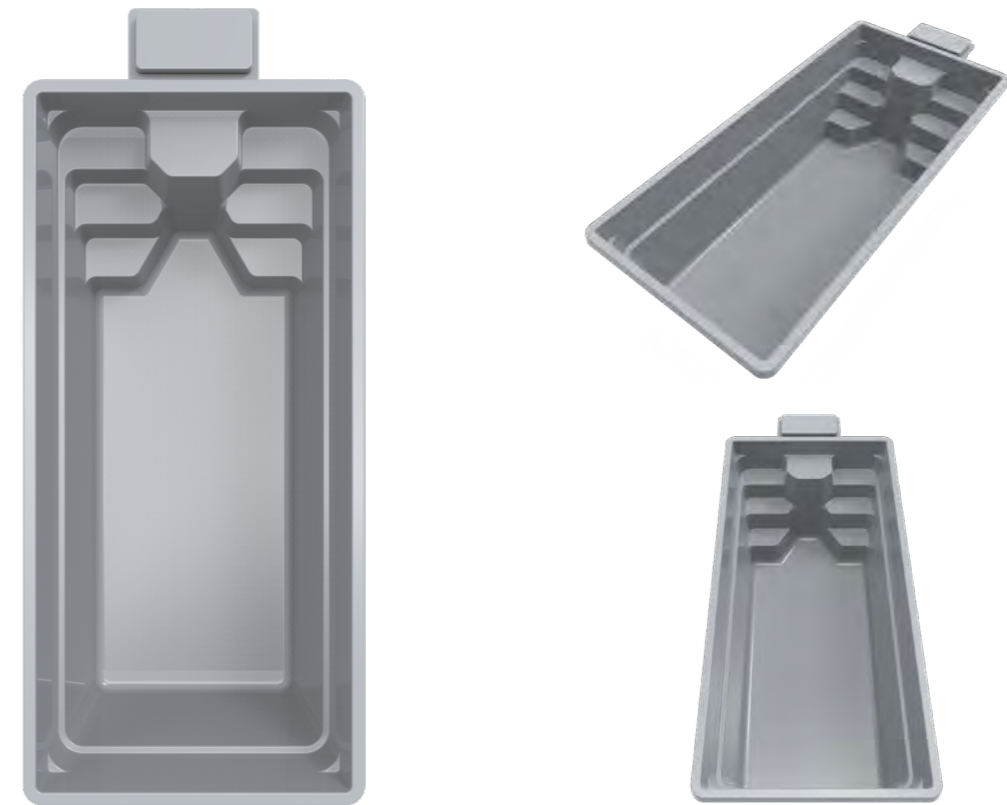
OUTSIDE LENGTH	OUTSIDE WIDTH	INSIDE LENGTH	INSIDE WIDTH	DEPTH	SURFACE AREA	VOLUME	WEIGHT
5.50 m	2.60 m	5.27 m	2.37 m	1.40 m	12.33 m ²	12.14 m ³	420 kg



JOY PRO



Perfect pool for small, cozy gardens. A plug and play solution that comes with a cartridge filter system, 4 rotating massage jets, swim jet, LED lightning, Balboa control system, 2 speed pump, 3.0 kW electrical heater and possibility to connect water curtains.



HIDDEN FEATURES:

- Anti-slip steps
- Adjusted step height
- Integrated swim jet place
- Special place for main drain
- Can be delivered with regular truck

OUTSIDE LENGTH	OUTSIDE WIDTH	INSIDE LENGTH	INSIDE WIDTH	DEPTH	SURFACE AREA	VOLUME	WEIGHT
6.10 m	2.60 m	5.27 m	2.37 m	1.40 m	12.33 m ²	12.14 m ³	580 kg

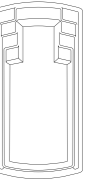


EUPHORIA WHITE FROST

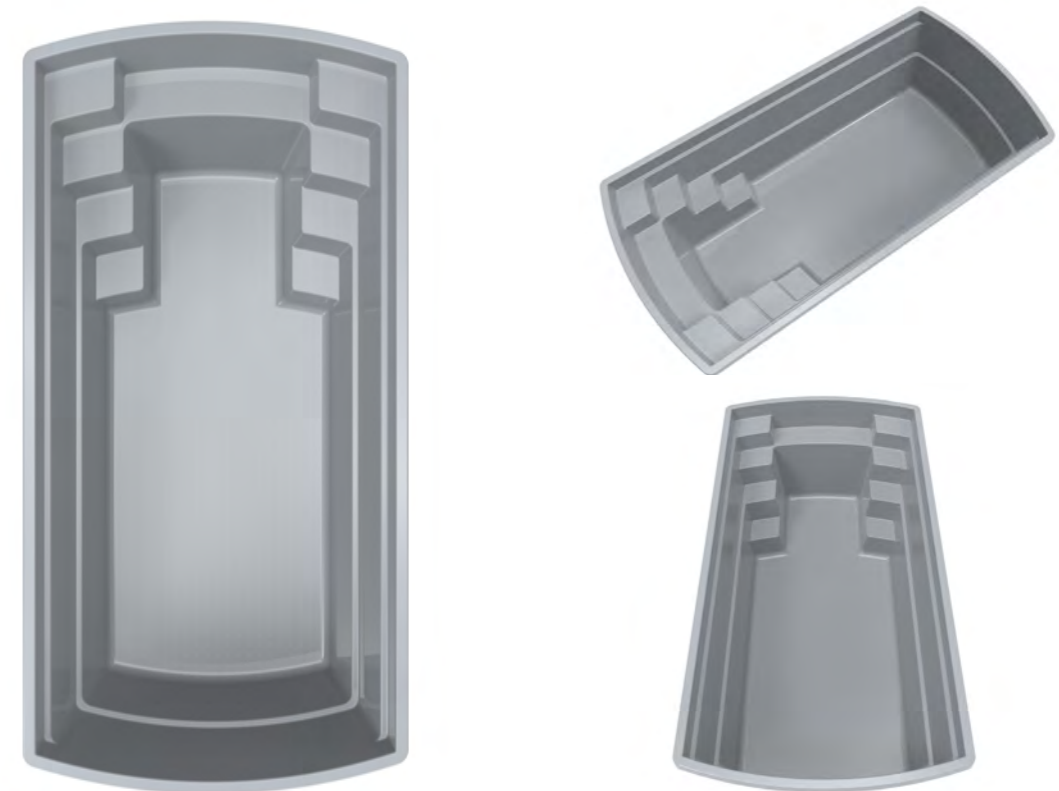
HIDDEN FEATURES:

- Anti-slip steps
- Adjusted step height
- Integrated swim jet place
- Special place for main drain
- Uninterrupted swimming channel
- Can be delivered with regular truck

EUPHORIA



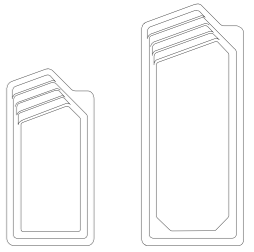
Small and nice-looking pool for those who have limited garden space and one of the best choices if the client wants to have something unconventional. Double sided steps and integrated bench will be very enjoyable.



OUTSIDE LENGTH	OUTSIDE WIDTH	INSIDE LENGTH	INSIDE WIDTH	DEPTH	SURFACE AREA	VOLUME	WEIGHT
6.00 m	3.00 m	5.77 m	2.80 m	1.45 m	15.46 m ²	15.56 m ³	550 kg



FLASH | GRAVITY



Wide, spacious steps for convenient entrance to the pool and integrated place for skimmer installation makes this pool unique. Pool comes in two different sizes. Gravity pool is also equipped with back wall corner seats.



FLASH



GRAVITY

HIDDEN FEATURES:

- Anti-slip steps
- Adjusted step height
- Integrated backwall seats
- Integrated skimmer place
- Special place for main drain
- FLASH can be delivered with regular truck

OUTSIDE LENGTH	OUTSIDE WIDTH	INSIDE LENGTH	INSIDE WIDTH	DEPTH	SURFACE AREA	VOLUME	WEIGHT
6.00 m	3.00 m	5.63 m	2.65 m	1.45 m	13.60 m ²	13.40 m ³	500 kg
8.20 m	3.70 m	7.85 m	3.15 m	1.55 m	22.80 m ²	24.20 m ³	820 kg



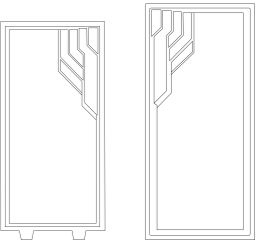


CORSICA OCEAN PEARL

HIDDEN FEATURES:

- Anti-slip steps
- 5-step entrance
- Adjusted step height
- Slatted cover guidelines
- Uninterrupted swimming channel
- Special place for main drain
- Possibility to order Slatted Cover version

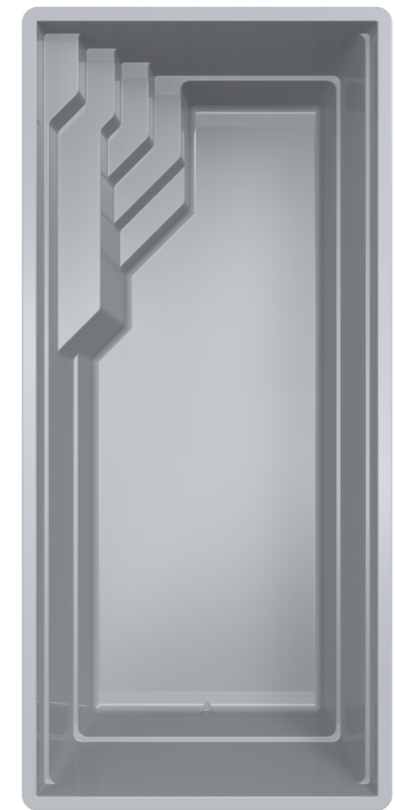
CORSICA | COSTA RICA



Newly released pool models designed for comfort. Convenient pool stairs with integrated bench for relaxation and height-adjusted 5 steps for easy and safe entrance.



CORSICA



COSTA RICA

OUTSIDE LENGTH	OUTSIDE WIDTH	INSIDE LENGTH	INSIDE WIDTH	DEPTH	SURFACE AREA	VOLUME	WEIGHT
7.40 m	3.70 m	7.00 m	3.31 m	1.50 m	23.04 m ²	28.72 m ³	840 kg
8.00 m	3.70 m	7.67 m	3.37 m	1.50 m	25.63 m ²	28.79 m ³	920 kg



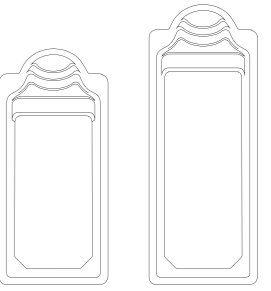


HALO WHITE FROST

HIDDEN FEATURES:

- Anti-slip steps
- 5-step entrance
- Adjusted step height
- Backwall integrated seats
- Integrated skimmer place
- Special place for main drain

HALO 8 | HALO 9



Pool with classic Roman style steps for those who seek elegance. Wide symmetrical entrance with 5 steps for easy access to the pool is accompanied by back wall corner benches and integrated skimmer place. Pool comes in two sizes.



HALO 8

HALO 9

OUTSIDE LENGTH	OUTSIDE WIDTH	INSIDE LENGTH	INSIDE WIDTH	DEPTH	SURFACE AREA	VOLUME	WEIGHT
8.00 m	3.70 m	7.66 m	3.35 m	1.50 m	23.42 m ²	25.40 m ³	830 kg
9.50 m	3.70 m	9.15 m	3.35 m	1.50 m	28.41 m ²	31.60 m ³	1100 kg



HALO WHITE FROST



HALO AQUA BLUE



HALO AQUA BLUE

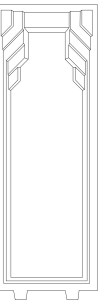


MONACO WHITE FROST

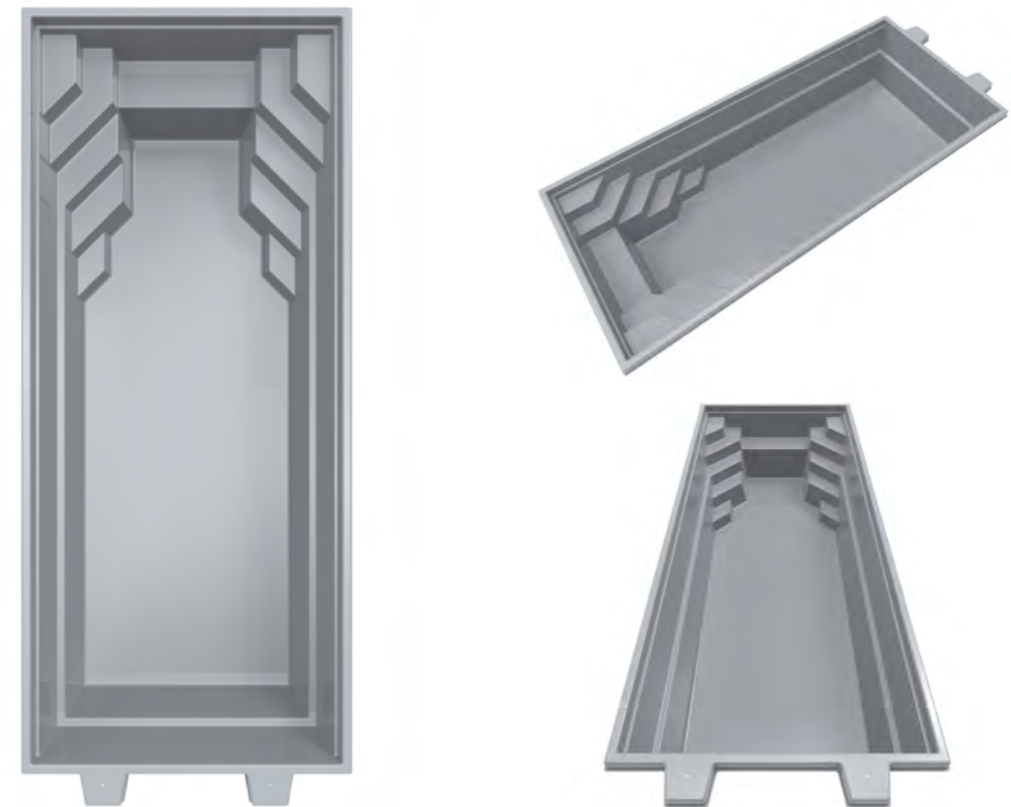
HIDDEN FEATURES:

- Anti-slip steps
- 5-step entrance
- Adjusted step height
- Slatted cover guidelines
- Uninterrupted swimming channel
- Special place for main drain

MONACO 650 | 750 | 850 | 1000



Modern and elegant best seller. Double-sided stairs allow a wide variety of pool positioning possibilities. Comes with an integrated bench, 5-step entrance, slat cover guidelines and uninterrupted swimming channel.



OUTSIDE LENGTH	OUTSIDE WIDTH	INSIDE LENGTH	INSIDE WIDTH	DEPTH	SURFACE AREA	VOLUME	WEIGHT
6.50 m	3.30 m	6.25 m	3.00 m	1.50 m	18.50 m ²	18.60 m ³	630 kg
7.50 m	3.70 m	7.18 m	3.38 m	1.50 m	24.40 m ²	25.90 m ³	900 kg
8.50 m	3.70 m	8.18 m	3.38 m	1.50 m	27.70 m ²	30.10 m ³	1000 kg
10.00 m	3.70 m	9.68 m	3.38 m	1.50 m	32.80 m ²	36.30 m ³	1250 kg



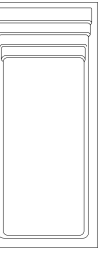


ANTIBES WHITE FROST

HIDDEN FEATURES:

- Anti-slip steps
- Adjusted step height
- Slatted cover guidelines
- Special place for main drain
- Possibility to order Slatted Cover version

ANTIBES



New model for those who love to spend time in the pool. Full width steps are designed for comfort and relaxation. Simplicity and elegance turn it to a dream pool.



OUTSIDE LENGTH	OUTSIDE WIDTH	INSIDE LENGTH	INSIDE WIDTH	DEPTH	SURFACE AREA	VOLUME	WEIGHT
8.32 m	3.70 m	8.00 m	3.37 m	1.50 m	26.80 m ²	28.46 m ³	940 kg