

# GALACTIC MONOBLOCK

PRO RANGE OF FILTRATION UNITS



**Professional, versatile filtration** unit for in-ground and above-ground pools.

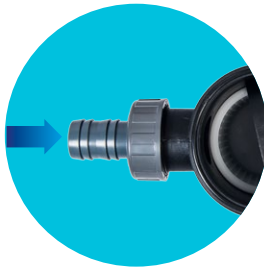
Includes a **filter** made of high-strength blown thermo-plastic, a 6-port **multiport valve** and a self-priming **pump**.

Wide **range of filtration rates**: flow rates from 5 m<sup>3</sup>/h to 14 m<sup>3</sup>/h.

Includes all accessories for **complete, quick installation**.

## CONDITIONS OF USE

<b>Intended uses:</b>	Swimming pool and spa water filtration
<b>Maximum water temperature:</b>	35°C
<b>Normal operating pressure:</b>	0.6-1.4 bar
<b>Maximum pressure:</b>	2.4 bar
<b>Filter medium:</b>	Sand or glass
<b>Filter medium particle size:</b>	0.4-0.8 mm



Quick and easy installation.



Outstanding pro service.



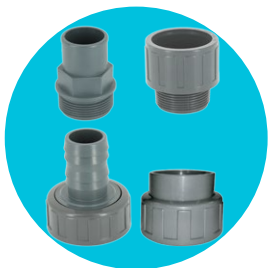
Versatility: for installation in above-ground or in-ground pools.

# GALACTIC MONOBLOCK

PRO RANGE OF FILTRATION UNITS



Complies with Standard  
EN 16713-01



### Connections:

Connections included for  $\varnothing 38\text{mm}$  and  $\varnothing 50\text{mm}$  on filter and pump.



### Self-priming pump:

With built-in strainer and cable with plug for quick installation. Water bleeder included.



### Top valve:

6-port valve for filtration, backwashing, rinsing, recirculation, emptying and closing operations.



### Pressure gauge and air bleeder:

Pressure gauge and air bleeder included in the valve.



### Filter body:

Highly resistant filter body in anthracite gray and high-quality finishes. Easy top access via a locking band. Water bleeder included.



### Accessories:

All accessories are included for complete, quick installation: base, flexible hose and hardware.

\*Sand or glass filter medium not included

## TECHNICAL SPECIFICATIONS

REF.	FLOW RATE m <sup>3</sup> /h	Ø FILTER mm	PUMP POWER HP	Ø CONNECTIONS mm	SAND kg*	DIMENSIONS (mm)				PACKAGING		
						Ø	A	B	C	D	WEIGHT Kg	DIMENSIONS mm
74471	5	380	1/3	38 / 50	40	380	860	710	635	295	20	790x600x700
74472	6	400	1/3	38 / 50	40	400	905	710	650	295	20.5	
74473	8	500	1/2	38 / 50	100	500	975	830	740	295	24	870x600x715
74474	10	500	3/4	38 / 50	100	500	975	830	740	295	25.5	
74475	12	600	3/4	38 / 50	150	600	1030	830	816	295	29	870x600x800
74476	14	600	1	38 / 50	150	600	1030	830	816	295	30	

