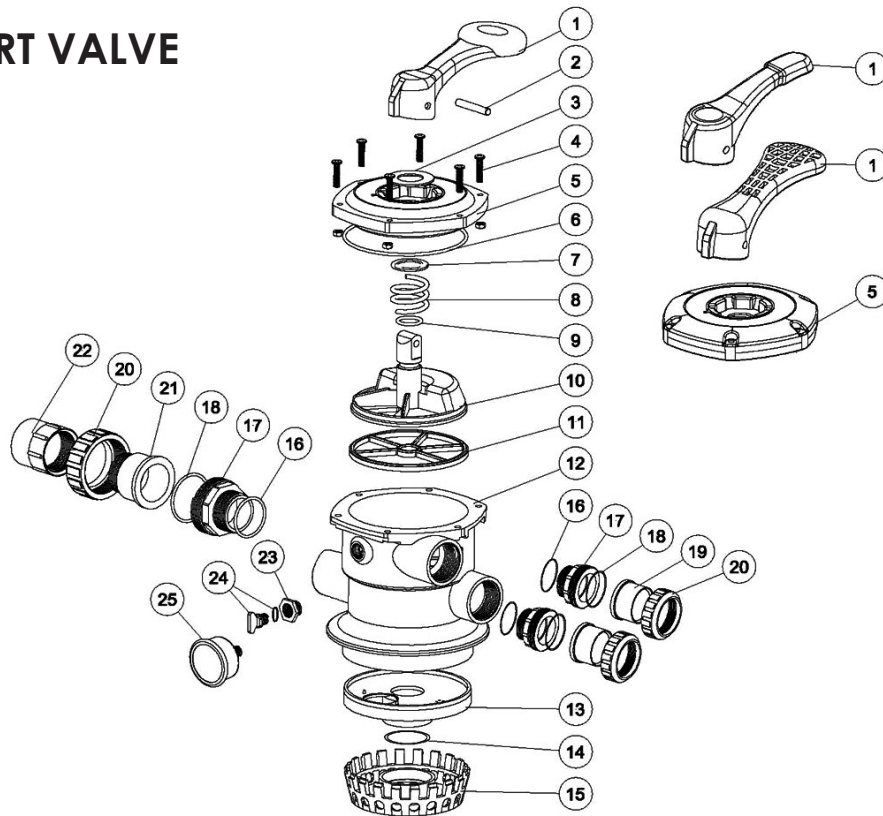


# 1.5" MULTIPORT VALVE



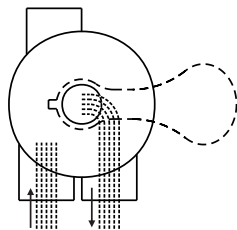
Key No.	Part No.	Description	Qty
1	01013003	Handle (Big)	1
1	01013002	Handle (Small)	1
1	01013001	Handle (Meshy)	1
2	03018008	Pin for Handle	1
3	01181001	Washer for Handle	1
4	89281203	M6 x 25 Screw with Nut for Camber Lid	6
4	89280107	M6 x 30 Screw with Nut for Standard Lid	6
5	01013154	1.5" Top/Side Mount Valve Standard Lid (Black)	1
5	01050121	1.5" Top/Side Mount Valve Standard Lid (White)	1
5	01013005	1.5" Top/Side Mount Valve Camber Lid (Black)	1
5	01051015	1.5" Top/Side Mount Valve Camber Lid (White)	1
6	02011002	O-Ring for 1.5" Valve Lid	1
7	01181002	Washer for Spring	1
8	03014001	Spring for 1.5" Top/Side Mount Valve	1
9	02011022	O-Ring for Valve Rotor	2
10	01021001	1.5" Valve Rotor	1
11	02311002	Spider Gasket	1
12	01013007	1.5" Top Mount Valve Bottom Body Clamp (Black)	1
12	01051011	1.5" Top Mount Valve Bottom Body Clamp (White)	1
13	01013011	1.5" Diffuser	1
14	02011001	O-Ring for Diffuser	1
15	01013012	1.5" Top Mount Valve Over Drain Diffuser	1
16	02020013	O-Ring for 1.5" Connector	3
17	01013015	1.5" Connector (Black)	3
17	01051013	1.5" Connector (White)	3
18	02011003	O-Ring for 1.5" Adaptor	3
19	01171153	1.5" Union (A/E)	2
20	01013017	1.5" Union Nut (Black)	3
20	01051014	1.5" Union Nut (White)	3
21	01041002	1.5" Union with Sight Glass (Short)	1
22	01172026	1.5" Union with Sight Glass Holder	1
23	89280119	Drain Plug Fitting	1
24	89021307	Drain Plug with O-ring	1
25	06011029	Oil Pressure Gauge with O-ring	1
25	06021013	Plastic Pressure Gauge with O-ring	1

## FUNCTIONS OF VALVE POSITIONS

Valve Position	Function
FILTER	Normal Filtration
BACKWASH	Cleaning Filter by reversing the flow
RINSE	Used after backwash to flush dirt from valve
WASTE	By-passes filter, used for vacuuming to waste or lowering water level
RECIRCULATE	By-passes filter for circulating water to pool
CLOSED	Shuts off all flow to filter or pool

### FILTER

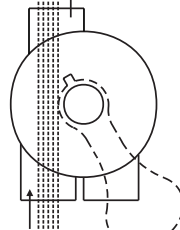
WASTE



IN FLOW OUT FLOW

### WASTE

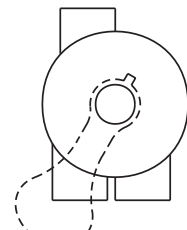
WASTE



IN FLOW OUT FLOW

### CLOSED

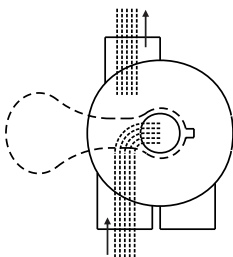
WASTE



IN FLOW OUT FLOW

### BACKWASH

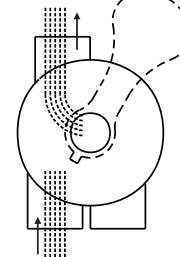
WASTE



IN FLOW OUT FLOW

### RINSE

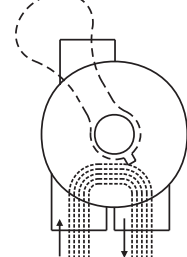
WASTE



IN FLOW OUT FLOW

### RECIRCULATE

WASTE



IN FLOW OUT FLOW

## GENERAL

- 1) Pipe tap boss provided for optional influent pressure gauge.
- 2) SERVICING VALVE( Stop pump,close gate valve in suction&discharge before proceeding):
  - a) Set handle in filter position.
  - b) Remove cover screws.
  - c) Lift cover and key assembly out.

## TO ASSEMBLE:

- d) Place valve key so that wedge opening is at TOP port (handle in Filter psn.). Flat edge of cover screw lug should align with flat edge of body screw lug.
- e) Position cover O'Ring.
- f) Secure assembly to body with cover screws. Tighten cover screws evenly and alternately. Do not over-tighten.

## WARNING

- ⚠️ TURN PUMP OFF BEFORE CHANGING VALVE POSITION.
- ⚠️ THIS FILTER OPERATES UNDER HIGH PRESSURE. WHEN ANY PART OF THE CIRCULATING SYSTEM (e.g., CLAMP, PUMP, FILTER, VALVES, ETC.) IS SERVICED, AIR CAN ENTER THE SYSTEM AND BECOME PRESSURIZED . PRESSURIZED AIR CAN CAUSE THE LID OR VALVE TO BE BLOWN OFF WHICH CAN RESULT IN SEVERE INJURY, DEATH, OR PROPERTY DAMAGE
- ⚠️ TO PREVENT DAMAGE TO THE PUMP AND FOR PROPER OPERATION OF THE SYSTEM,CLEAN PUMP STRAINER AND SKIMMER BASKETS REGULARLY.