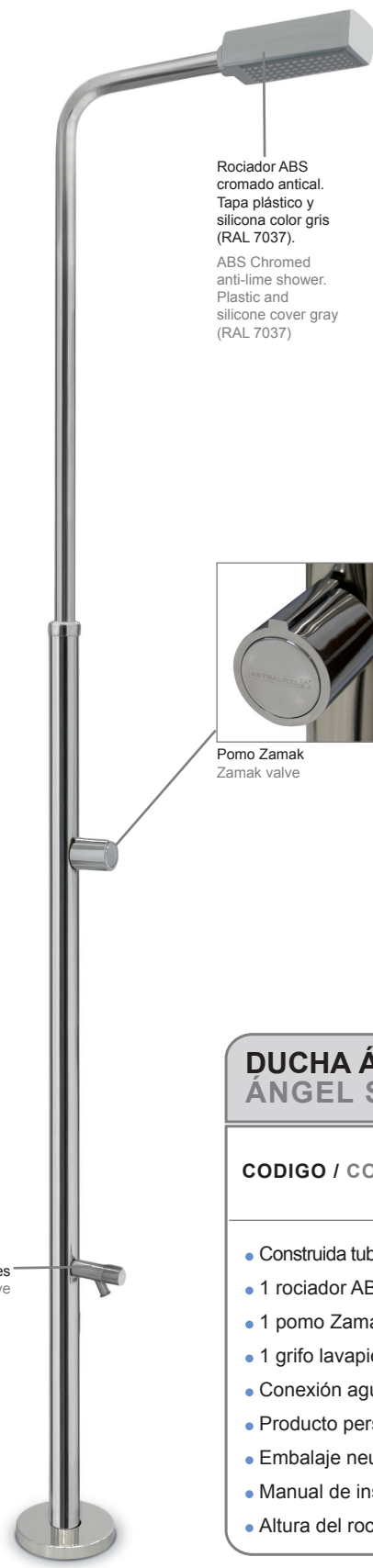


**CARACTERÍSTICAS TÉCNICAS**  
**TECHNICAL CHARACTERISTICS**

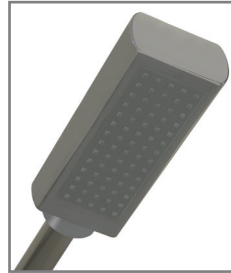


Su novedoso diseño y su adaptabilidad y la alta calidad de sus materiales le proporcionaran una imagen elegante y moderna.

With an innovative design and the high quality of its materials provide you with an elegant and modern image.

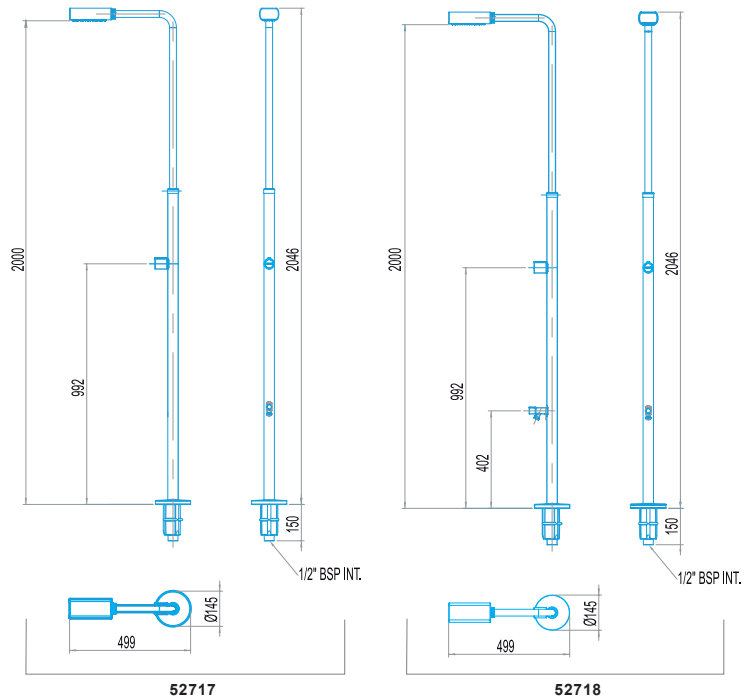


Rociador ABS cromado antical.  
Tapa plástico y silicona color gris (RAL 7037).  
ABS Chromed anti-lime shower.  
Plastic and silicone cover gray (RAL 7037)



Pomo Zamak  
Zamak valve

Grifo lavapiés  
Footwash valve



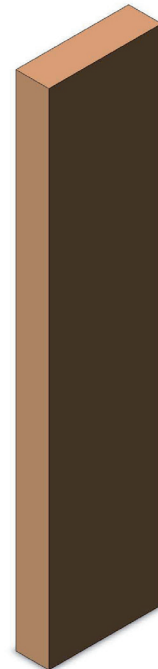
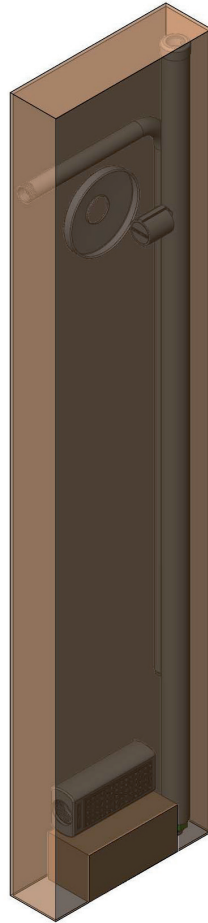
**DUCHA ÁNGEL**  
**ÁNGEL SHOWER**

**CODIGO / CODE** ▶ **52717**  
▶ **52718 CON GRIFO LAVAPIES / FOOTWASH TAP**

- Construida tubo de Ø43 mm acero inox. AISI-304
- 1 rociador ABS cromado antical.
- 1 pomo Zamak.
- 1 grifo lavapiés (Cod. 52718)
- Conexión agua 1/2" BSP INT.
- Producto personalizado.
- Embalaje neutro con etiqueta personalizada.
- Manual de instrucciones personalizado.
- Altura del rociador al suelo 2 m.
- Made of pipe Ø 43 mm AISI-304 stainless steel.
- 1 ABS chromed anti-lime shower heads.
- 1 Zamak valve
- 1 footwash tap (Cod. 52718)
- Water inlet connection 1/2" BSP INT.
- Customized product.
- Neutral packaging, with adhesive customized.
- Customized manual instructions.
- Height shower head to ground 2 m.

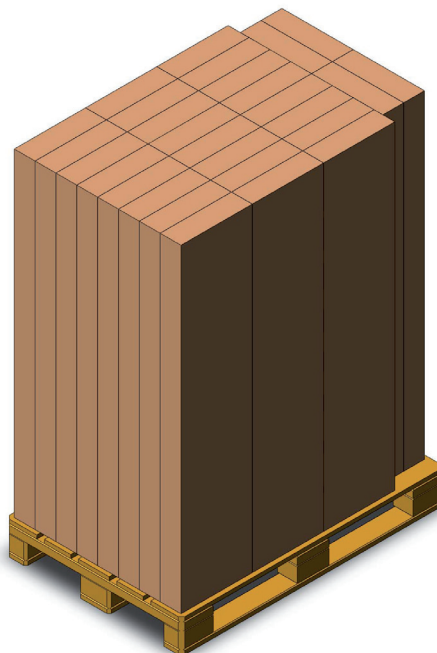


LOGÍSTICA  
LOGISTICS



► Embalaje / Packaging

▼ Paletizado / Palletized



**EMBALAJE Y PALETIZADO**  
**PACKAGING AND PALLETIZING**

Caja (cm): Box (cm):	145,5 x 32,5 x 9,5
Unidades / Caja: Units / Box:	1
Palet (cm): Pallet (cm):	80 x 120 x 160,5
Unidades / Palet: Units / Pallet:	28