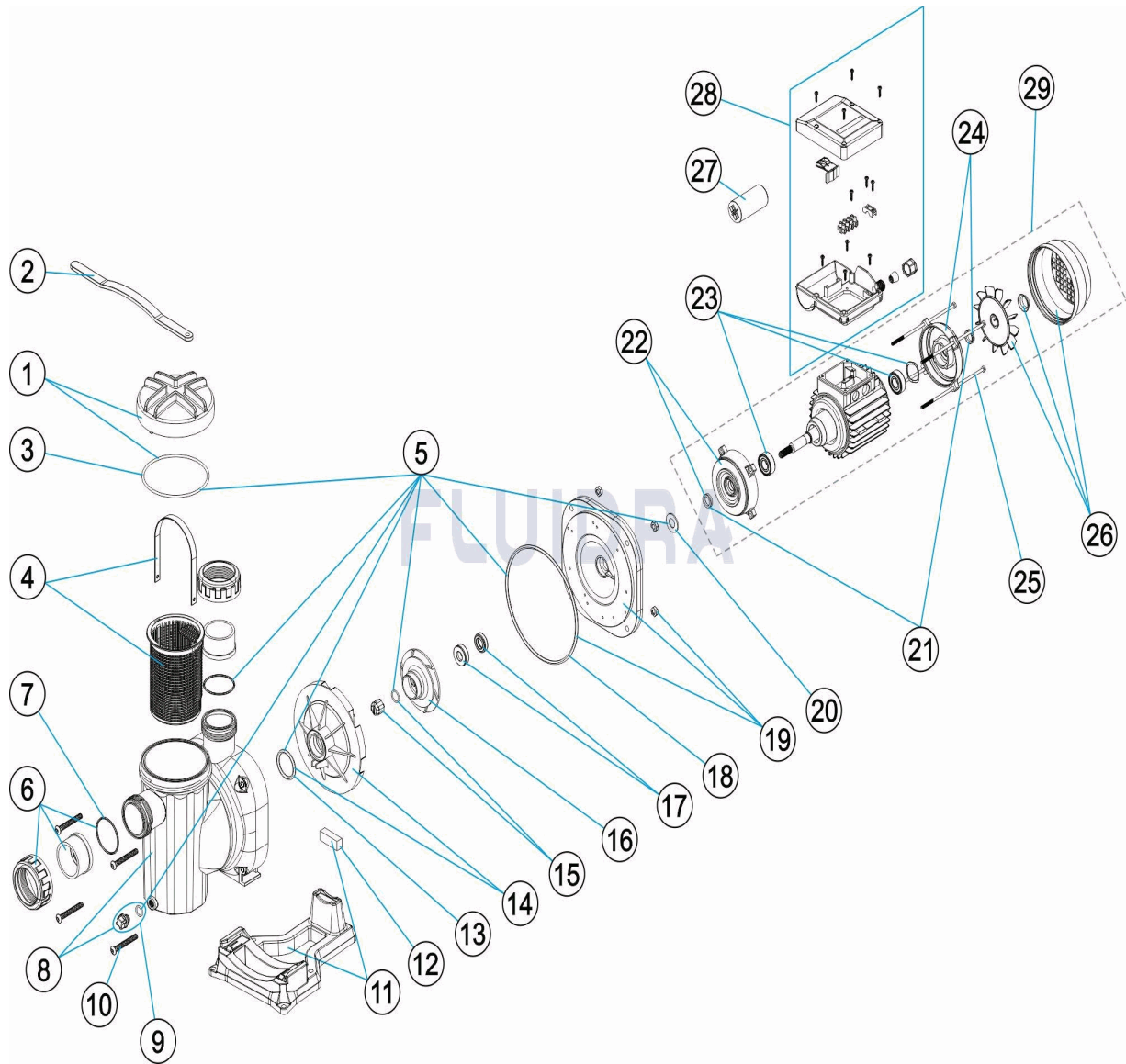


CODE **25461, 25462, 25463, 25464, 25465, 25466, 25467, 25468**

DESCRIPTION: **SENA PUMP**



POS	CODE	DESCRIPTION	QUANTITY	POS	CODE	DESCRIPTION	QUANTITY
1	4405010401	PRE-FILTER CLOSURE		14	4405010411	DIFFUSER	
2	4405010436	LID KEY		15	* 4405010209	IMPELLER COVER M10 RIGHT	
3	4405010437	O' RING D 118X4		15	* 4405010134	IMPELLER COVER M8 LEFT	
4	4405010402	PRE-FILTER BASKET		16	* 4405010413	IMPELLER 0,33 HP 50 HZ	
5	4405010403	GASKETS 0,75 - 1,25 HP		16	* 4401010040	IMPELLER 0,33 HP 60 HZ	
6	4405010404	UNION FITTINGS		16	* 4405010414	IMPELLER 0,5 HP 50 HZ	
7	4405010438	O' RING D 54X2,5		16	* 4401010041	IMPELLER 0,5 HP 60 HZ	
8	4405010405	PUMP HOUSING		16	* 4405010415	IMPELLER 0,75 HP 50 HZ	
9	4404121107	PLUG 1/4'		16	* 4401010042	IMPELLER 0,75 HP 60 HZ	
10	4405010979	BACK PLATE SCREWS		16	* 4405010416	IMPELLER 1 HP 50 HZ	
11	* 4405010896	PUMP BASE		16	* 4401010043	IMPELLER 1 HP 60 HZ	
11	* 4405010897	PUMP BASE		16	* 4405010417	IMPELLER 1,25 HP 50 HZ	
12	* 4405010409	SILENTBLOCK (16X45X13)		16	* 4401010044	IMPELLER 1,25 HP 60 HZ	

* SEE OBSERVATIONS SHEET

CODE **25461, 25462, 25463, 25464, 25465, 25466, 25467, 25468**

DESCRIPTION: **SENA PUMP**

12	* 4405010442	SILENTBLOCK 3/4 - 1 - 1,25 HP	17	4405010118	MECHANICAL SEAL
13	4405010439	O' RING D 38X5	18	4405010440	O' RING D 180X5
19	* 4405010418	MOTOR CLAMP C 63	27	* 4405010149	CONDENSER 12 UF 1/2 CV
19	* 4405010419	MOTOR CLAMP C 71	27	* 4405020121	CONDENSER 14 UF 3/4 CV
20	4405010163	DEFLECTOR WASHER C.71 1/2-1 HP	27	* 4405020122	CONDENSER 16 UF 1 CV
21	4405010158	V-RINGS 0,5 HP - 1 HP	28	* 4405010154	TERMINAL BOX ASSEMBLY C. 63-71 II
22	* 4405010423	MECH. FLANGE C63	28	* 4405010156	TERMINAL BOX COVER C 63-71 III
22	* 4405010424	MECH. FLANGE C71 (1/2-3/4-1-1,25 HP)	29	* 25461R0300	MOTOR 0,33 HP. II
23	4405010135	MOTOR BEARINGS < 1 HP	29	* 25462R0300	MOTOR 1/2 HP II
24	* 4405010140	REAR MOTOR COVER 1/3 A 1/2 HP	29	* 25463R0300	MOTOR 3/4 HP II
24	* 4405010141	REAR MOTOR COVER 3/4 A 1 HP	29	* 25464R0300	MOTOR 3/4 HP III
25	* 4405010427	MOTOR TIES (1/2 - 1 HPL)	29	* 25465R0300	MOTOR 1 HP II
25	* 4405010428	MOTOR SCREW 3/4 HP TO 1.25 HP	29	* 25466R0300	MOTOR 1 HP III
26	* 4405010146	FAN COVER ASSEMBLY 0,5 HP	29	* 25467R0300	MOTOR 1,25 HP. II
26	* 4405010147	FAN COVER ASSEMBLY 0,75 - 1 HP	29	* 25468R0300	MOTOR 1,25 HP. III

CODE **25461, 25462, 25463, 25464, 25465, 25466, 25467, 25468**

DESCRIPTION: **SENA PUMP**

OBSERVATIONS

POS	CODE	OBSERVATIONS
11	* 4405010896	FOR: 25461, 25462
11	* 4405010897	FOR: 25463, 25464, 25465, 25466, 25467, 25468
12	* 4405010409	FOR: 25461, 25462
12	* 4405010442	FOR: 25463, 25464, 25465, 25466, 25467, 25468
15	* 4405010209	FOR: 25461, 25462, 25463, 25465, 25467
15	* 4405010134	FOR: 25464, 25466, 25468
16	* 4405010413	FOR: 25461 50 HZ
16	* 4401010040	FOR: 25461 60 HZ
16	* 4405010414	FOR: 25462 50 HZ
16	* 4401010041	FOR: 25462 60 HZ
16	* 4405010415	FOR: 25463, 25464 50 HZ
16	* 4401010042	FOR: 25463, 25464 60 HZ
16	* 4405010416	FOR: 25465, 25466 50 HZ
16	* 4401010043	FOR: 25465, 25466 60 HZ
16	* 4405010417	FOR: 25467, 25468 50 HZ
16	* 4401010044	FOR: 25467, 25468 60 HZ
19	* 4405010418	FOR: 25461, 25462
19	* 4405010419	FOR: 25463, 25464, 25465, 25466, 25467, 25468
22	* 4405010423	FOR: 25461, 25462
22	* 4405010424	FOR: 25463, 25464, 25465, 25466, 25467, 25468
24	* 4405010140	FOR: 25461, 25462
24	* 4405010141	FOR: 25463, 25464, 25465, 25466, 25467, 25468
25	* 4405010427	FOR: 25461, 25462
25	* 4405010428	FOR: 25463, 25464, 25465, 25466, 25467, 25468
26	* 4405010146	FOR: 25461, 25462
26	* 4405010147	FOR: 25463, 25464, 25465, 25466, 25467, 25468
27	* 4405010149	FOR: 25461, 25462
27	* 4405020121	FOR: 25463
27	* 4405020122	FOR: 25465, 25467
28	* 4405010154	FOR: 25461, 25462, 25463, 25465, 25467
28	* 4405010156	FOR: 25464, 25466, 25468
29	* 25461R0300	FOR: 25461
29	* 25462R0300	FOR: 25462
29	* 25463R0300	FOR: 25463
29	* 25464R0300	FOR: 25464
29	* 25465R0300	FOR: 25465
29	* 25466R0300	FOR: 25466
29	* 25467R0300	FOR: 25467
29	* 25468R0300	FOR: 25468