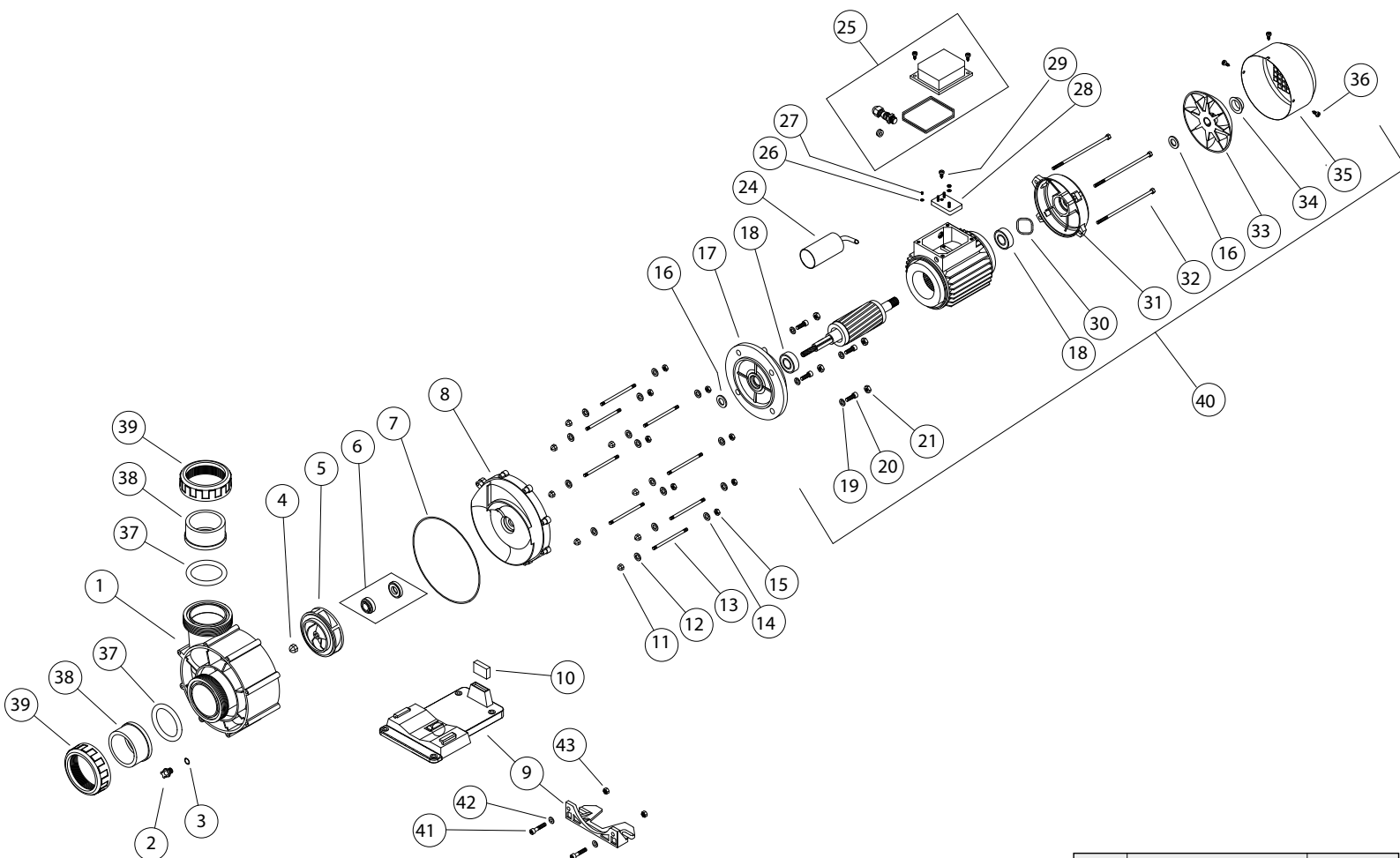




BCC / NEW BCC

COUNTER CURRENT EQUIPMENT PUMPS



N°		CODE
1	BCC	HD041041
1	newBCC	HD041045
2		HD036000
3		HD021100
4		HD031075
5	BCC	HD051140
5	newBCC 3 CV	HD051145
5	newBCC 4 CV	HD051150
5	newBCC 5,5 CV	HD051149
6		HD056010

N°		CODE
7	BCC	HD021090
7	newBCC	HD021095
8	BCC	HD061035
8	newBCC	HD061040
9	BCC	HD066015
9	newBCC	HD066020
10	newBCC 3 CV	HD071015
10	newBCC 4 / 5,5 CV	HD071005
11	newBCC (8 Unit)	HD031065
12	(8 Unit)	HD031005

N°		CODE
13	BCC (8 Unit)	HD026040
13	newBCC (8 Unit)	HD026080
14	newBCC (8 Unit)	HD031037
15	(8 Unit)	HD031050
16	3 CV (2 Unit)	MT001025
16	4 / 5,5 CV (2 Unit)	MT001030
17	3 CV	MT006100-V
18	3 CV (2 Unit)	MT026010
18	4 / 5,5 CV (4 Unit)	MT026015
19	3 CV (4 Unit)	HD031010
19	4 / 5,5 CV (4 Unit)	HD031036
20	(4 Unit)	HD026065
21	(4 Unit)	HD031055
24	1-PH 3 CV	MT091015
25	1-PH 3 CV	MT088020
25	3-PH 3 CV	MT088010
26	3 CV	MT076000

N°		CODE
27	3 CV	MT076005
28	3 CV	MT081020
29	3 CV	MT076015
30	3 CV	MT096010
31	3 CV	MT016070-V
32	3 CV (4 Unit)	MT101050
33	3 CV	MT086095
34	3 CV	MT086105
35	3 CV	MT021045-V
36	3 CV (4 Unit)	MT076035
37	newBCC (2 Unit)	HD021125
38	newBCC (2 Unit)	HD076025
39	newBCC (2 Unit)	HD076030
40	BCC 1-PH 3 CV	MT999160
40	BCC 3-PH 3 CV	MT999165
40	newBCC 1-PH 3 CV	MT999170
40	newBCC 3-PH 3 CV	MT999175
40	newBCC 3-PH 4 CV	MT106045
40	newBCC 3-PH 5,5 CV	MT106055
41	BCC (2 Unit)	HD026035
42	BCC (2 Unit)	HD031010
43	BCC (2 Unit)	HD031055