

ASTRALPOOL RECOMMENDATION

POOL FINISH COLORS

Colors of pool shell materials recommended by AstralPool depending on the color of your pool's finish.



COLORS OF POOL FINISHES

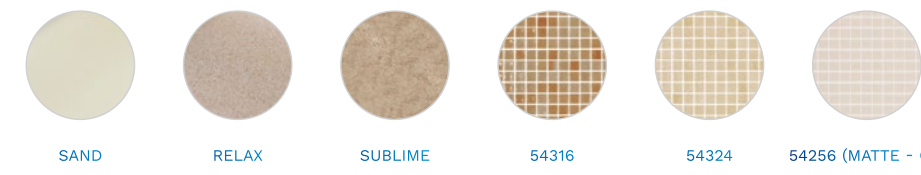


LIGHT BLUE ADRIATIC BLUE CARIBBEAN GREEN WHITE 67497 54357

RECOMMENDED COLORS
DEPENDING ON POOL FINISH



WHITE



SAND RELAX SUBLIME 54316 54324 54256 (MATTE - C3)



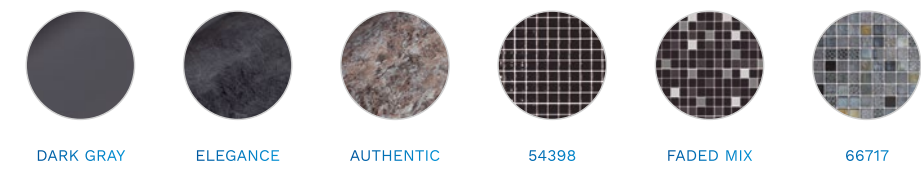
BEIGE CL090 RAL1015



LIGHT GRAY PLATINUM VANITY PERSIA SAND FADED MIX



LIGHT GRAY CL129 RAL7004



DARK GRAY ELEGANCE AUTHENTIC 54398 FADED MIX 66717



ANTHRACITE CL144 RAL7016



FLUIDRA

For further information:
astralpool.com

FLUIDRA S.A.
fluidra.com

FLUIDRA

POOL SHELL MATERIALS RANGE OF COLORS

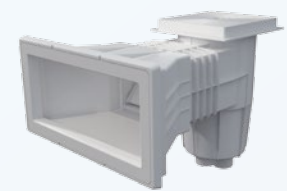
VERSATILITY AND COLOR
FOR YOUR POOL

A wide range of recessed components
in different colors for a perfect finish
in your prefabricated pool.



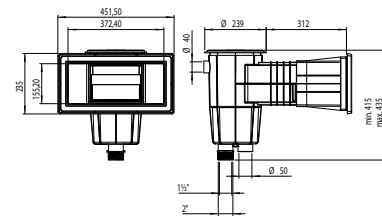
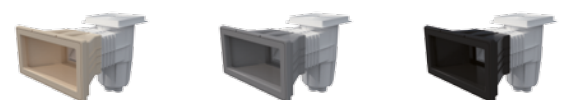
ASTRALPOOL 

15 L

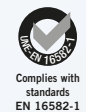


SKIMMER WITH WIDE OPENING

Supplied with adhesive gaskets, flange and screws.



White | 01464

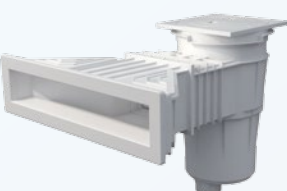


Beige Light gray Anthracite

01464CL090 01464CL129 01464CL144

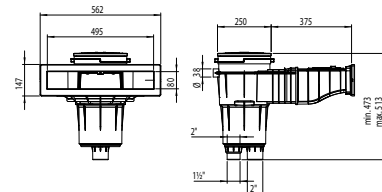
sizes

17.5 L



SKIMMER NORM

Range of 17.5-lskimmers suitable for installation in public and private pools. Made of white ABS with UV treatment, it comes with a weir flap, flow regulator, cover height adjuster and leaf trap. The water inlet is 495 x 80 mm. Recommended flow rate of 7.5 m³/h. Install one skimmer for every 25 m² of water surface area. For connections of less than 1 1/2 and 2", and a water overflow connection of Ø 40 mm.



White | 56176 | 56299*

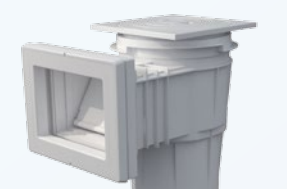


Beige Light gray Anthracite

56176CL090 56176CL129 56176CL144

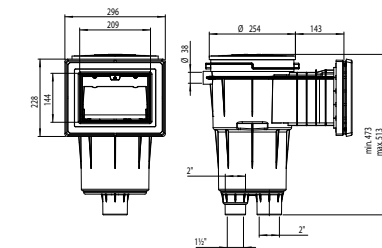
56299CL090* 56299CL129* 56299CL144*

sizes



SKIMMER WITH STANDARD OPENING AND SQUARE COVER

Supplied with adhesive gaskets, flange and screws.



White | 11309 | 11310 | 11316*

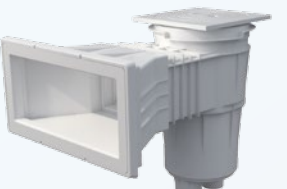


Beige Light gray Anthracite

11309CL090 11309CL129 11309CL144

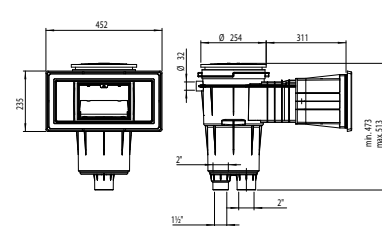
(11310CL090/ 11316CL090) 11310CL129 11310CL144 11316CL129* 11316CL144*

sizes



SKIMMER WITH STANDARD OPENING AND SQUARE COVER

Supplied with adhesive gaskets, flange and screws.



White | 11311 | 11317*



Beige Light gray Anthracite

11311CL090 11311CL129 11311CL144

11317CL090* 11317CL129* 11317CL144*

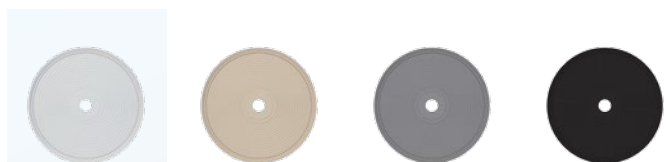
sizes

* Product code without inserts: Parker model

SKIMMER COVERS

MAIN DRAINS

ROUND COVER WITH ROUND FRAME

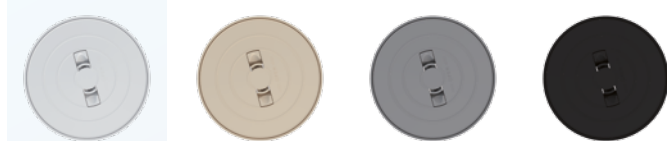


White Beige Light gray Anthracite

00249-0600 00249-0600CL090 00249-0600CL129 00249-0600CL144

15 L

ROUND COVER WITH ROUND FRAME



White Beige Light gray Anthracite

05280-0600 05280-0600CL090 05280-0600CL129 05280-0600CL144

17.5 L

ROUND COVER WITH SQUARE FRAME

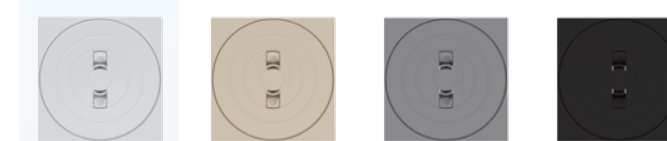


White Beige Light gray Anthracite

00249-0700 00249-0700CL090 00249-0700CL129 00249-0700CL144

15 L

ROUND COVER WITH SQUARE FRAME



White Beige Light gray Anthracite

05280-0700 05280-0700CL090 05280-0700CL129 05280-0700CL144

17.5 L

MAIN DRAIN NORM



White Beige Light gray Anthracite

56378 56379 56378CL090 56379CL090 56378CL129 56379CL129 56378CL144 56379CL144



Range of main drains suitable for public and private swimming pools. Supplied with flat or antivortex grilles. Made of ABS with UV treatment, with a 2" side outlet and a 1 1/2" bottom outlet connection, and bottom outlet covered by semi-die cut tab.

MAIN DRAIN NORM - ANTIVORTEX COVER



White Beige Light gray Anthracite

56380 56381* 56382 56383* 56380CL090 56381CL090* 56382CL090 56383CL090* 56380CL129 56381CL129* 56382CL129 56383CL129* 56380CL144 56381CL144* 56382CL144 56383CL144*



PREFABRICATED POOLS Range of main drains suitable for public and private swimming pools. Supplied with flat or antivortex grilles. Made of ABS with UV treatment, with a 2" side outlet and a 1 1/2" bottom outlet connection, and bottom outlet covered by semi-die cut tab.

MAIN DRAIN Ø180



White Beige Light gray Anthracite

01467 01467CL090 01467CL129 01467CL144

CONCRETE POOLS Body and grille in ABS. Grille fitted using screws. Max. flow rate: 13 m³/h.

MAIN DRAIN Ø210



White Beige Light gray Anthracite

00271 06474* 00271CL090 06474CL090* 00271CL129 06474CL129* 00271CL144 06474CL144*

PREFABRICATED POOLS 2" side outlet. Body and grille in ABS. Comes with self-adhesive gaskets, flange and screws. Maximum recommended flow rate: 13 m³/h.

* Product code without inserts: Parker model

RETURN INLETS

SUCTION INLETS

POOL FLOOR INLETS

NET'N'CLEAN INLETS

INLET NORM



White Beige Light gray Anthracite

56499 56500 56499CL090 56500CL090 56499CL129 56500CL129 56499CL144 56500CL144



PREFABRICATED POOLS Range of inlets suitable for installation in public and private pools. Made of ABS with UV treatment.

INLETMULTIFLOW WITH 2" GLUED THREAD (Ø50 mm)



White Beige Light gray Anthracite

00330 00330CL090 00330CL129 00330CL144

PREFABRICATED POOLS For ABS liner pools, with gaskets and screws.

INLET 2" GLUED THREAD (Ø50 MM)



White Beige Light gray Anthracite

00332 00332CL090 00332CL129 00332CL144

PREFABRICATED POOLS Outer 2" thread, with inner Ø of 50 mm. Made of ABS. Comes with plug, gaskets and screws.

INLET 2" GLUED THREAD (Ø50mm)

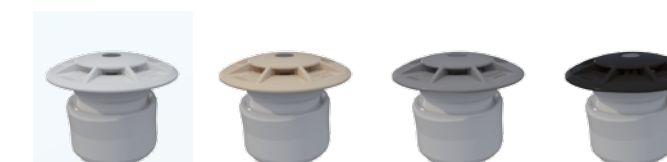


White Beige Light gray Anthracite

00303* 00303CL090* 00303CL129* 00303CL144*

CONCRETE POOLS Return/suction inlet. Adjustable flow rate. Made of ABS plastic and screws in stainless steel. Maximum recommended flow rate compliant with standard EN 13451-1: 12 m³/h.

INLET TILTING WITH GLUED PIPE (Ø75 mm)



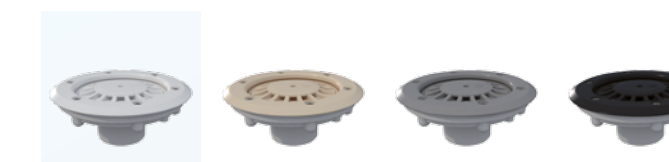
White Beige Light gray Anthracite

22353 22353CL090 22353CL129 22353CL144



CONCRETE POOLS Tilting body in PVC. Cover in ABS. Adjuster screw in POM. Maximum flow rate: 10 m³/h. Fits to Ø 75 mm piping and wall conduit with code number 21248.

INLET 2" GLUED THREAD (Ø50 mm)



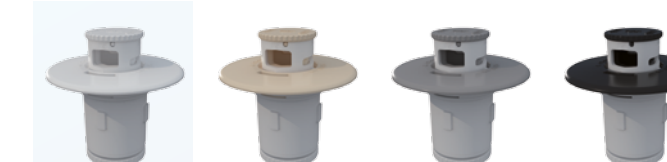
White Beige Light gray Anthracite

00340 00340CL090 00340CL129 00340CL144



PREFABRICATED POOLS Return inlet. Comes with gaskets, flange and screws. Adjustable flow rate. Maximum flow rate: 12 m³/h.

INLETS NET'N'CLEAN

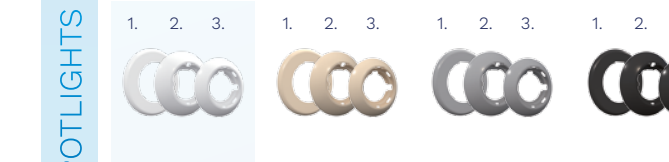


White Beige Light gray Anthracite

65234 65234CL090 65234CL129 65234CL144

Inner assembly kit for Net'N'Clean inlet.

LUMIPLUS FLEXI SPOTLIGHTS



White Beige Light gray Anthracite

71209 71210 71211 71209CL090 71210CL090 71211CL090 71209CL129 71210CL129 71211CL129 71209CL144 71210CL144 71211CL144

Faceplates 1. Niche 71209 2. Slim 71210 3. Rapid 71211 The new family of LumiPlus Flexi spotlights: FlexiNiche, FlexiSlim and FlexiRapid, are characterized by their great adaptability to any type of new-build and existing liner or concrete pool and can be fitted in a niche, on the surface of or bushing.

* Product code without inserts: Parker model

SKIMMERS - PREFABRICATED POOLS