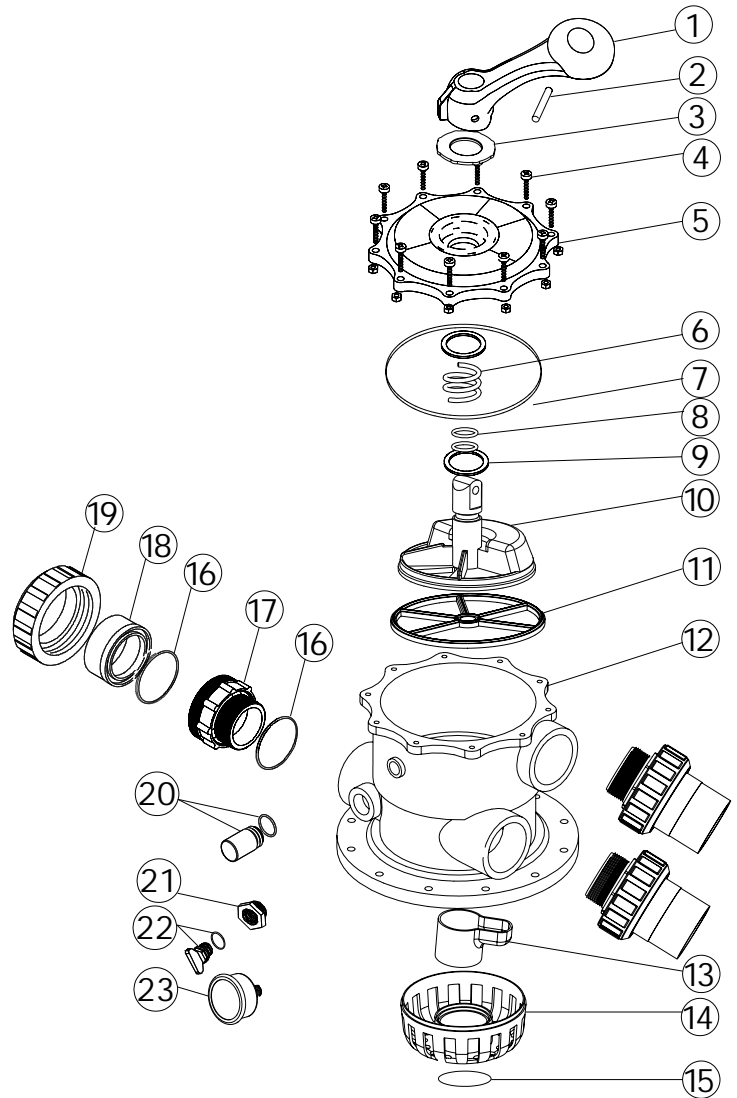


# 2.0 " Clamp Type Multiport Valve

## PARTS OF VALVE

Item	Part No .	Product Description	Qty
1	01013003	Handle B(g )	1
2	03018008	Pin for Handle	1
3	01181027	Washer for Handle	1
4	89280301	M6 *32 Screw with Nut	10
5	01013019	2 0 "Top Mount Valve Standard Lid B(ack )	1
6	03014014	Spring for 2 0 "Top Mount Valve	1
7	02011006	O -Ring for 2 0 "Top Mount Valve Lid	1
8	02011022	O -Ring for 2 0 "Top Mount Valve Rotor	2
9	01181002	Washer for Spring	2
10	01021002	2 0 "Valve Rotor	1
11	02311003	Spider Gasket	1
12	01013027	2 0 "Top Mount Valve Bottom Body b(ack )	1
13	01013029	2 0 "Water Tube	1
14	01013030	2 0 "Diffuser	1
15	02011005	O -Ring for Diffuser	1
16	02020016	O -Ring for Connector	6
17	01013031	2 0 "Connector with External Thread B(ack )	3
18	01171154	2 0 "Union Adaptor	3
19	01013032	2 0 "Union Nut B(ack )	3
20	89280104	Sight Glass with O -Ring	1
21	01111048	Connector for Pressure Gauge Stopper	1
22	89021303	Drain Plug with O -ring	1
23	06011029	Oil Pressure Gauge With O -ring 40psi )	1
	06011030	Oil Pressure Gauge With O -ring 60psi )	



## WARNING

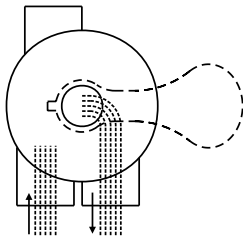
- ⚠️ TURN PUMP OFF BEFORE CHANGING VALVE POSITION.
- ⚠️ THIS FILTER OPERATES UNDER HIGH PRESSURE. WHEN ANY PART OF THE CIRCULATING SYSTEM (e.g., CLAMP, PUMP, FILTER, VALVES, ETC.) IS SERVICED, AIR CAN ENTER THE SYSTEM AND BECOME PRESSURIZED . PRESSURIZED AIR CAN CAUSE THE LID OR VALVE TO BE BLOWN OFF WHICH CAN RESULT IN SEVERE INJURY, DEATH, OR PROPERTY DAMAGE
- ⚠️ TO PREVENT DAMAGE TO THE PUMP AND FOR PROPER OPERATION OF THE SYSTEM, CLEAN PUMP STRAINER AND SKIMMER BASKETS REGULARLY.

## FUNCTIONS OF VALVE POSITIONS

Valve Position	Function
FILTER	Normal Filtration
BACKWASH	Cleaning Filter by reversing the flow
RINSE	Used after backwash to flush dirt from valve
WASTE	By-passes filter, used for vacuuming to waste or lowering water level
RECIRCULATE	By-passes filter for circulating water to pool
CLOSED	Shuts off all flow to filter or pool

### FILTER

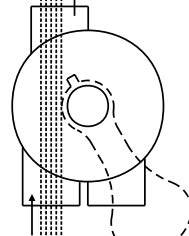
WASTE



IN FLOW OUT FLOW

### WASTE

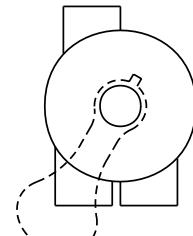
WASTE



IN FLOW OUT FLOW

### CLOSED

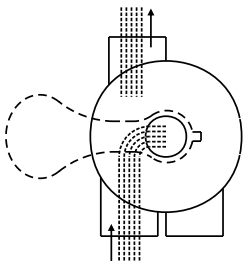
WASTE



IN FLOW OUT FLOW

### BACKWASH

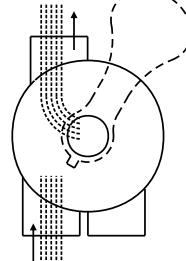
WASTE



IN FLOW OUT FLOW

### RINSE

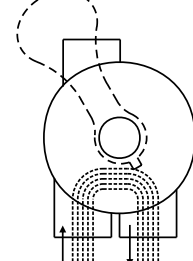
WASTE



IN FLOW OUT FLOW

### RECIRCULATE

WASTE



IN FLOW OUT FLOW

### GENERAL

- 1) Pipe tap boss provided for optional influent pressure gauge.
- 2) SERVICING VALVE( Stop pump,close gate valve in suction&discharge before proceeding):
  - a) Set handle in filter position.
  - b) Remove cover screws.
  - c) Lift cover and key assembly out.

### TO ASSEMBLE:

- d) Place valve key so that wedge opening is at TOP port (handle in Filter psn.). Flat edge of cover screw lug should align with flat edge of body screw lug.
- e) Position cover O'Ring.
- f) Secure assembly to body with cover screws. Tighten cover screws evenly and alternately. Do not over-tighten.