

#58199

220-240V~50Hz, 300W

Hmax 1.5m Hmin 0.19m IPX5



Bestway
Inflate Your Fun™

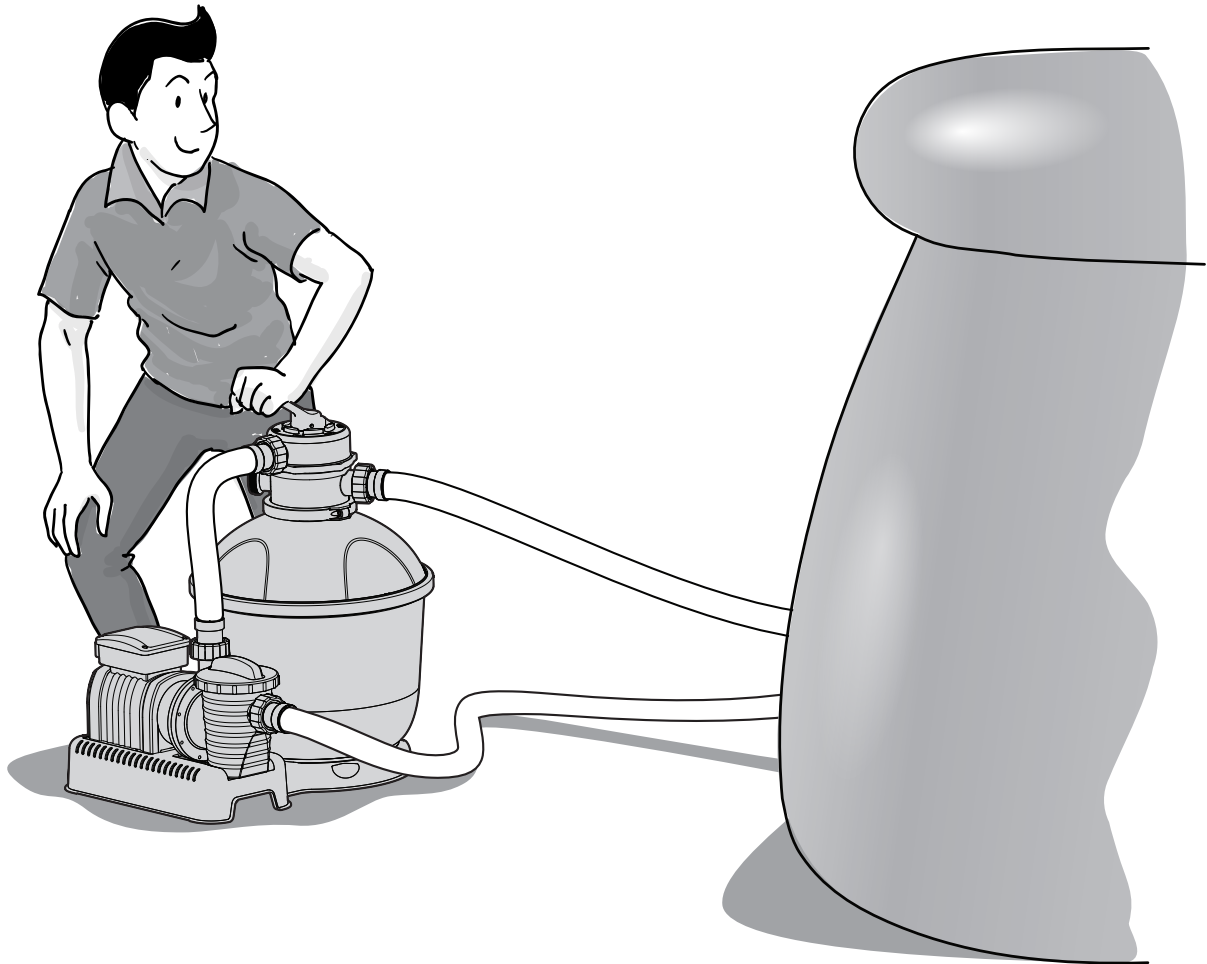


Illustration non contractual

FLOWCLEAR™ **Sand Filter** **Owner's Manual**

www.bestway-service.com



WARNING

IMPORTANT SAFETY INSTRUCTIONS - READ AND FOLLOW ALL SAFETY INSTRUCTIONS - SAVE THESE INSTRUCTIONS

When installing and using this electrical equipment, basic safety precautions should always be followed, including the following:

- To reduce the risk of injury, do not permit children to use this product unless they are closely supervised at all times.
- **RISK OF ELECTRIC SHOCK** - The sand filter must be supplied by an isolating transformer or supplied through a residual current device (RCD) having a rated residual operating current not exceeding 30mA.
- **RISK OF ELECTRIC SHOCK** - Forbid the access of the pool in case of damage of the sand filter.
- **DO NOT BURY CORD.** Locate cord to minimize abuse from lawn mowers, hedge trimmers, and other equipment.
- To reduce the risk of electric shock, replace damaged cord immediately.
- If the supply cord is damaged, it must be replaced by the manufacturer, its service agent or similarly qualified persons in order to avoid a hazard.
- To reduce the risk of electric shock, do not use extension cord to connect unit to electric supply; provide a properly located outlet.
- Risk of electric shock. Using the sand filter with an unmatched electrical supply is dangerous and will permanently damage the sand filter.
- Do not remove the grounding prong or modify the plug in anyway. Do not use adaptor plugs. Consult a qualified electrician for any questions relating to validity of your plugs or grounding.
- Handle the sand filter with care. Do not pull or carry the sand filter by the power cord. Never pull a plug from the outlet by yanking the power cord. Keep cord free from abrasions. Sharp objects, oil, moving parts, and heat should never be exposed to the sand filter.
- Always unplug this product from the electrical outlet before removing, cleaning, servicing or making any adjustment to the product.
- This appliance is not intended for use by persons (including children) with reduced physical, sensor or mental capabilities, or lack of experience and knowledge, unless they have been given supervision or instruction concerning use of the appliance by a person responsible for their safety. Children should be supervised to ensure that they do not play with this product.
- Electric installations should fulfill the local requirements, such as standards DIN VDE0100 part 702 for Germany. Consult a qualified electrician for any questions.

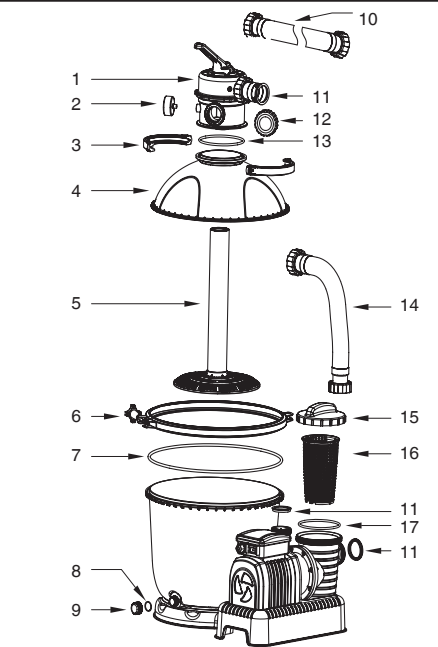
CAUTION: This sand filter is for use with storable pools only. Do not use with permanently-installed pools. A storable pool is constructed so that it is capable of being readily disassembled for storage and reassembled to its original integrity. A permanently-installed pool is constructed in or on the ground or in a building such that it cannot be readily disassembled for storage.

NOTES:

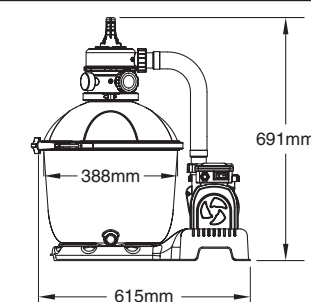
- Place the sand filter on solid, level ground. Ensure the sand filter is at least 2 meters away from poolside. Keep distance as far as possible.
- Pay attention to position pool and sand filter so adequate ventilation, drainage, and access for maintenance is available. Never place the sand filter in an area that may accumulate water, or on a walking path with lots of foot traffic.
- It is necessary to have the plug accessible after installation of the pool. The plug of the sand filter shall be at least 3,5m away from the pool.
- Atmospheric conditions may affect the performance and life span of the sand filter; take adequate precautions to protect the sand filter from unnecessary wear and tear that may occur during periods of cold or hot weather and/or exposure to sun.
- Please examine and verify all sand filter components are present before use. Notify Bestway at the customer service address listed on this manual for any damaged or missing parts at the time of purchase.
- It is imperative to change as soon as possible all deteriorated parts. Only use parts approved by the manufacturer.
- Do not allow children or adults to lean or sit on the apparatus.
- Do not add chemicals to the sand filter.
- When chemical products are used to clean the pool water, it is recommended to respect a minimum filtration time to preserve the health of swimmers which depends on compliance of health regulation.
- This product is not intended for commercial use.

PARTS REFERENCE OVERVIEW

Before assembling the sand filter, take a few minutes to become familiar with all the sand filter parts.

|  | | | | |
|---|------------------|------|----------|--|
| REF.NO. | DESCRIPTION | QTY. | PART NO. | |
| 1 | Control Valve | 1 | P6536 | |
| 2 | Pressure Gauge | 1 | P6571 | |
| 3 | Top Flange Clamp | 2 | P6553 | |
| 4 | Top Tank | 1 | P6564 | |
| 5 | Hub | 1 | P6557 | |
| 6 | Flange Clamp | 1 | P6558 | |
| 7 | O-ring | 1 | P6559 | |
| 8 | Drain Washer | 1 | P6581 | |
| 9 | Drain Valve Cap | 1 | P6580 | |
| 10 | Hose | 2 | P6610 | |
| 11 | Washer | 5 | P6029 | |
| 12 | Port D Cap | 1 | P6540 | |
| 13 | O-ring | 1 | P6149 | |
| 14 | Piping | 1 | P6560 | |
| 15 | Strainer Cover | 1 | P6561 | |
| 16 | Strainer | 1 | P6562 | |
| 17 | Seal Ring | 1 | P6563 | |

SPECIFICATIONS

| | | |
|---|-------------------------------|--|
|  | Filter Diameter: | 388mm |
| | Effective Filter Area: | 0.116m ² (1.25ft ²) |
| | Max. Operating Pressure: | 0.24MPa (35 PSI) |
| | Working sand filter pressure: | < 0.045MPa (6.5PSI) |
| | Max. Water Temperature: | 35°C |
| | Sand: | Not included |
| | Sand Size: | #20 silica sand, 0.45-0.85mm |
| | Sand Capacity: | Approximately 2/3 of the Tank, 25kg |

PUMP DISPOSAL



Meaning of crossed-out wheeled dustbin:

Do not dispose of electrical appliances as unsorted municipal waste, use separate collection facilities. Contact your local government for information regarding the collection systems available.

■ If electrical appliances are disposed of in landfills or dumps, hazardous substances can leak into the groundwater and get into the food chain, damage your health and well-being.

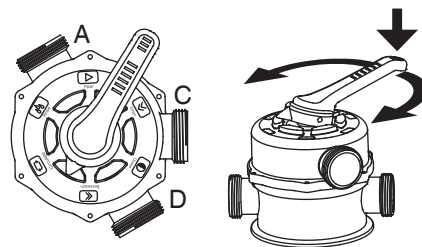
When replacing old appliances with new ones, the retailer is legally obligated to take back your old appliance for disposals at least free of charge.

CONTROL VALVE OVERVIEW

WARNING: To prevent equipment damage and possible injury, always switch off sand filter before changing the Control Valve function. Changing valve positions while the pump is running can damage the Control Valve, which may cause personal injury or property damage.

How to Use the Control Valve

Press down on the Control Valve handle and rotate to desired function.



CONTROL VALVE FUNCTIONS

The Control valve is used to select 6 different filter functions: Filter, Rinse, Circulate, Backwash, Closed and Drain.



Filter: This function is used to filter pool water and should be positioned here 99% of the time. Water is pumped through the sand filter, where it is cleaned and returned to the pool.



Backwash: This function is used to clean the sand bed; water is pumped down through the Collector Hub, upwards through the sand bed, and deposited out of Port D.



Rinse: This function for initial startup, cleaning, and sand bed leveling after Backwash; water is pumped downwards through the sand bed, up through the Collector Hub and deposited out of the valve Port D.



Circulate: This function circulates pool water bypassing the sand filter; use this function if the filter is broken to collect debris in the Debris Screens.



Drain: This function drains water from the pool; another filter bypass setting, water is pumped and deposited out of Port D, instead of returning it to the pool.



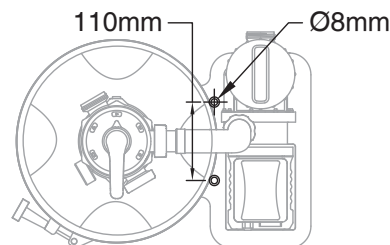
Closed: This function stops water flowing between the sand filter and the pool.

NOTE:

- Be sure all provisions for wastewater disposal meet applicable local, state or national codes. Do not discharge water where it will cause flooding or damage.
- When the Control Valve is set to the Backwash, Rinse, or Drain position, water will discharge from Port D on the Control Valve.
- Do not switch on or operate the sand filter with the Control Valve set to the Closed function or it will seriously damage the sand filter.
- Do not set the Control Valve between two functions, or it will lead to leaking.
- To avoid water leakage, screw the Port D Cap onto the Control Valve Port D before operating the sand filter.

Section I: Assembly (You will need a Phillips screwdriver.)

- Carefully remove all components from the package and check to ensure nothing is damaged. If equipment is damaged, immediately notify the retailer from where the equipment was purchased.
- The sand filter should be placed on solid, level ground, preferably a concrete slab. Position the sand filter so the Ports and Control Valve are accessible for operation, servicing and winterizing.
- EN60335-2-41 TEST standard requires the sand filter must be vertically fixed on ground or a certain pedestal made of wood or concrete before use to prevent the sand filter from accidental falling. Fully assembled sand filter will exceed 18kg. The mounting holes should be 8mm in diameter and spaced 110mm apart. Use two bolts and nuts with a maximum of 8mm in diameter to fasten the sand filter to the pedestal.



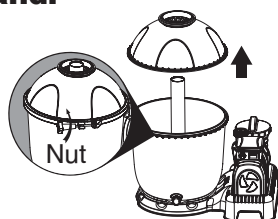
Load pool-grade filter sand.

NOTE: Use only special pool-grade filter sand, free of all limestone or clay: #20 Silica sand 0.45-0.85mm, approximately one 25kg bag should suffice. Use of other sands will reduce filtering performance and may damage the sand filter, thereby voiding the warranty.

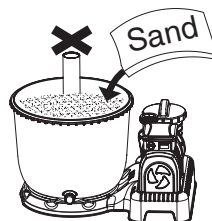
NOTE: To avoid damaging the Skimmer when adding sand, pour some water into the Bottom Tank to submerge the Skimmer on the Collector Hub.

NOTE: SAND NOT INCLUDED. Do not pour the sand into the pipe of the Collector Hub.

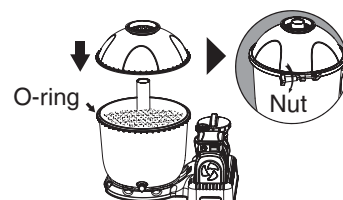
NOTE: Make sure the O-ring on the rim of the Top Tank is clean, and has no nicks, tears, or scrapes or sand on it.



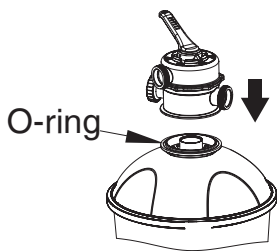
Turn the nut counter clockwise to release the flange clamp and remove the Top Tank.



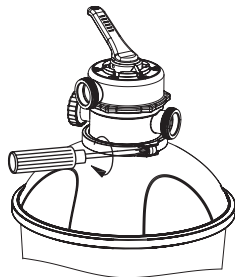
Center the Collector Hub in the Bottom Tank. Slowly, add the sand so the weight of the sand does not damage the Skimmer on the Collector Hub, until it reaches the top rim of the Bottom Tank. Do not pour the sand into the pipe of the Collector Hub.



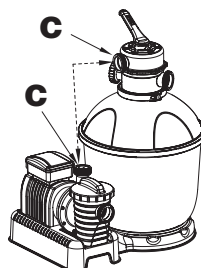
Ensure the O-ring is in place on the rim of the Bottom Tank. Attach the Top Tank to the Bottom Tank, place the Flange Clamp over the seam and turn the Nut clockwise to fasten it.



Attach the Control Valve to the Top Tank, ensuring the O-ring is in place on the rim of the Top Tank and that the vertical pipe of the Collector Hub is inserted into the base of the Control Valve.



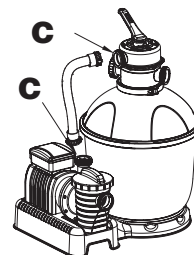
Attach the Top Flange Clamp and screw into position.



Connect the Pressure Gauge onto the Control Valve.

NOTE: Make sure the O-ring on the rim of the Top Tank is clean, dry, and has no nicks, tears, scrapes or sand on it.

NOTE: Before tightening, make sure Port C on the Control Valve is align Port C on the Pump.



Attach the Piping to Pump Port C and to Control Valve Port C, screw the threaded locking rings into position. Make sure the Washer is properly positioned on both ends of the Piping.

Section II: Hose Configuration for Backwashing and Rinsing

NOTE: Ensure the Control Valve is set to the Closed function.

Your pool should be filled with water.

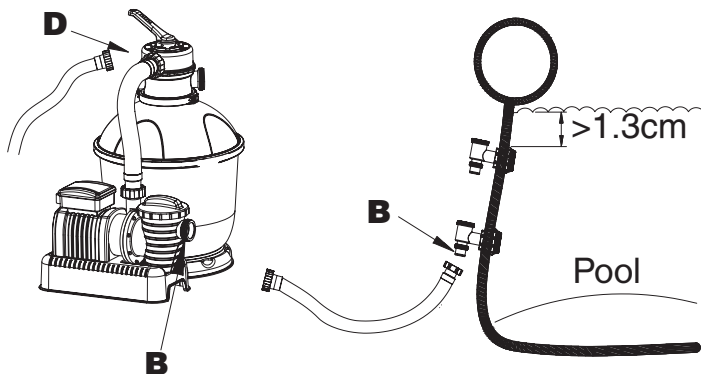
1. Attach one Hose to the sand filter's Port B; screw the threaded locking ring into position.
2. Connect the other end of the Hose to Port B connection valve; screw the threaded locking ring into position.
3. Open the connection valve. This allows water to flow to the sand filter.

NOTE: You can refer to pool manual for connection valve's installation instructions.

4. Connect the other Hose to Port D and place the opposite end in drain area.

IMPORTANT: Ensure the Control Valve is set to the Closed function.

IMPORTANT: Make certain both of the pool's connection valves are fully submerged by water before operating the sand filter.



Section III: Backwash and Rinsing

Backwash and Rinsing must be performed to prepare the pump for its first use and to wash the sand.

CAUTION: DO NOT DRY RUN THE SAND FILTER

1. Press down on the Control Valve handle and rotate to the Backwash function.
2. Insert the plug into a residual current device, then switch on the sand filter and run the sand filter for 3-5 minutes, or until the water runs clear.
3. Switch off the sand filter and set the Control Valve to the Rinse function.
4. Switch on the sand filter and run the sand filter for 1 min. This circulates water backwards through the sand filter and drains water out Port D.
5. Switch off the sand filter. Set the Control Valve to the Closed function.
6. Top up pool water.

IMPORTANT: This procedure removes water from the pool, which you'll need to replace. Switch off the sand filter immediately if water levels near the pool's Inlet and Outlet valves. **DO NOT DRY RUN THE SAND FILTER.**

Section IV: Complete Sand Filter Installation

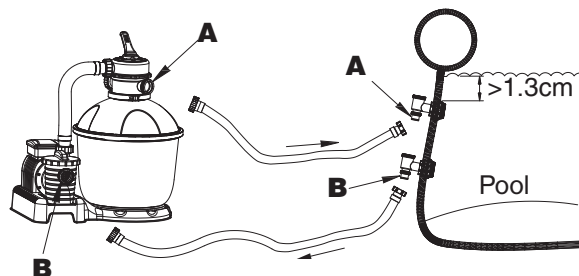
Connect the Second Hose

NOTE: It is imperative to check that the hydraulic connectors are not obturated.

NOTE: Ensure the Control Valve is set to the Closed function.

1. Detach the Hose from Port D.
2. Attach the Hose to the Control Valve's Port A; screw the threaded locking ring into position.
3. Connect the other end of Hose to the pool's Inlet A.
4. Open the connection valve. This allows water to flow to the sand filter.

NOTE: You can refer to pool manual for connection valve's installation instructions.



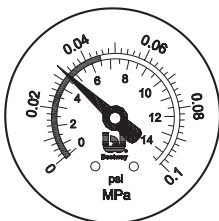
Sand Filter Operation

1. Now the sand filter is ready for use. Set the Control Valve to the Filter function.

NOTE: To prevent the risk of electrical shock dry any excess water from yourself and the sand filter.

2. Switch on the sand filter to run it.

NOTE: The sand filter has now started its filtering cycle. Check that water is returning to the pool and take note of the filter pressure on Pressure Gauge. Generally, the recommended sand filter pressure is less than 0.045MPa (6.5PSI) (in green area) when it is running.



Sand Filter Maintenance

CAUTION: You must ensure the sand filter is switched off and unplugged before any maintenance begins or severe risk of injury or death exists. Take action to avoid using pools if the filter has problem.

Check the suction if there is any blocking.

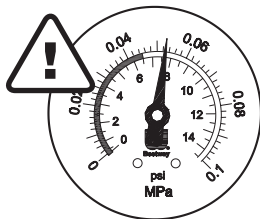
Replace all the damaged components.

As dirt builds up in the sand filter, the pressure reading on Pressure Gauge will increase. When the Pressure Gauge is 0.045MPa (6.5PSI) or higher, or water flow to the pool is too low, it is time to clean the sand.

To clean the sand bed, follow all instructions outlined previously in **Section III:**

Backwash and Rinsing.

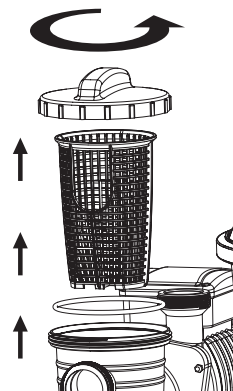
NOTE: We recommend you clean the sand bed once a month or less regularly depending on how often the pool is used. Do not clean the sand too frequently.



Cleaning the Strainer

1. Switch off the sand filter and set the Control Valve to the Closed function.
2. Close the connection valves.
3. Remove the Strainer Cover by unscrewing it.
4. Take out the Strainer, remove any debris.
5. Put the Strainer back into position. Ensure the hole in the strainer is aligned.
6. Ensure the Seal Ring is in place. Secure the Strainer Cover back.
7. Open the connection valves.

NOTE: The Strainer must be emptied and cleaned periodically. A dirty or blocked strainer will reduce the performance of the sand filter.



Lowering or Draining Pool Water

1. Switch off the sand filter and set Control Valve to the Drain function.
 2. Detach the Hose from the connection valve's Port A and sand filter Port A and attach to Port D.
 3. Switch on the sand filter to remove pool water.
- WARNING: DO NOT DRY RUN THE SAND FILTER.**

Winterizing

In areas that have freezing winter temperatures, pool equipment must be winterized to protect against damage. Allowing water to freeze will damage the sand filter and void warranty.

1. Backwash the sand filter as previously outlined.
2. Drain the pool according to the pool owner's manual.
3. Open the drain nut at the bottom of the tank and release the remaining water.
4. Disconnect the two Hoses from the pool and the sand filter.
5. Completely spill the sand out of the tank and dry all components.
6. Store the sand filter in a dry location out of child's reach.

TROUBLESHOOTING

| Problems | Probable Causes | Solutions |
|-----------------------------|--|--|
| Sand is flowing to the pool | - Sand is too small - Sand bed is calcified | - Recommend 0.45mm to 0.85mm #20 silica sand - Change sand |
| Excessive filter pressure | - Dirty filter - Calcified sand bed - Insufficient backwashing | - Backwash - Inspect sand and change if necessary - Backwash until effluent runs clear |
| Control Valve leaks | - Control Valve is set between two functions | - Set to one function |
| Connectors leaks | - Washer not in place - Loose Hoses | - Replace the washer - Tighten them |

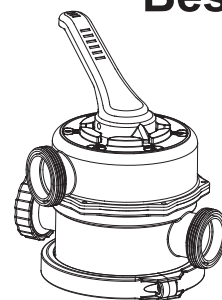
Limited BESTWAY® Manufacturer's Warranty 2013

The product you have purchased comes accompanied a limited warranty. Bestway stands behind our quality guarantee and assures, through a replacement warranty, your product will be free from manufacturer's defects that result in leaks.

To enact a claim, this warranty card must be filled out completely and returned along with:

- 1) Your purchase receipt
- 2) Control valve (P6536) to be sent by post to the address of the after -sales centre contacted, for details please refer to your country according to the information you find on the back cover. Before sending the control valve, please contact your after sales center for instructions.

Bestway is not responsible for economic loss due to water or chemical costs. With the exception of replacement product, the results of leak are not Bestway responsibility. Bestway will not place any products deemed to have been neglected or having been used outside of the owner's manual guidelines.



TO: BESTWAY SERVICE DEPARTMENT

DATE _____

Customer Code Number _____

FAX/E-MAIL/TEL: Please refer to your country according to the information you find on the back cover.

Please provide your address details in full. Note: Incomplete address details will result in delayed shipments.

REQUIRED INFORMATION -- PLEASE WRITE THE DELIVERY ADDRESS

Name: _____

Address: _____

Zipcode: _____

City: _____

Country: _____

Telephone: _____

Mobile: _____

E-MAIL: _____

Fax: _____

Select the product you have purchased:

- | | | |
|-------------------------------|-------------------------------|-------------------------------|
| 800GAL | 1000GAL | 1500GAL |
| <input type="radio"/> 58126NL | <input type="radio"/> 58257 | <input type="radio"/> 58199 |
| | <input type="radio"/> 58257GB | <input type="radio"/> 58199GB |
| | <input type="radio"/> 58258 | <input type="radio"/> 58256 |

Description of problem

- ☐ Water leaking ☐ Stopped working
- ☐ Item is incomplete, Which part is missing - Please put the code you find on the instruction manual

☐ Others, please describe _____

For request of spare parts consumer has to send us also the page of the manual with a cross near the missing or faulty part.

All the information given need to be complete in order to receive our assistance.
You have to send also a copy of your purchase receipt together with this fax.
YOU CAN ALSO VISIT OUR WEB SITE:
www.bestway-service.com



Bestway

*Inflate Your Fun*TM

Austria

Tel: (+43) 720 882434
Fax: (+43) 720 882435
E-mail: austria@bestway-service.com

Belgium & Luxembourg

Tel: 0 800 20 132
Fax: (+32) 02 6104411
E-mail: belgiumservice@bestway-europe.com

Denmark

Tel: (+45) 33 32 10 19
Fax: (+45) 33 32 10 36
E-mail: denmark@bestway-service.com

Finland

Tel: (+358) 2 4363 600
Fax: (+358) 2 4380 550
E-mail: finland@bestway-service.com

Bestway France

Tel: 08 92 707 709 (0.34 € TTC / Minute)
Fax: (+33) 04 89 069 991
E-mail: sav@bestway-france.com
www.bestway-france.fr

Bestway Germany

Tel: (+49) 069 4600 1281
Fax: (+49) 069 4600 1282
E-mail: kundendienst@bestway-europe.com

Greece

Tel: 00 800 391 275 300
Fax: (+39) 02 9139 0361
E-mail: aftersales@bestway-europe.com

Hungary

Tel: (+36) 06 40 204 624
Fax: (+36) 23 382 406
Email: hungary@bestway-service.com

Bestway Italy

Tel: (+39) 02 3626 5839
Fax: (+39) 02 9139 0361
E-mail: assistenza@bestway-europe.com

The Netherlands

Tel: 08002378929
Fax: (+31) 887878969
E-mail: dutchservice@bestway-europe.com

Norway

Tel: (+47) 22 65 01 22
Fax: (+47) 22 72 11 27
E-mail: norway@bestway-service.com

Poland

Tel: (+48) 322326040
Tel: (+48) 327505320
Fax: (+48) 327505330
E-mail: serwis@bestway-service.com

Portugal

Telefono: 900101402
(Só a partir de linha telefónica fixa)
: (+34) 902351045
Fax: (+34) 902451560
E-mail: sac@bestwayiberica.com

Spain

Telefono: (+34) 902351045
Fax: (+34) 902602705
E-mail: sac@bestwayiberica.com

Sweden

Tel: (+46) 8 506 691 90
Fax: (+46) 506 690 99
E-mail: sweden@bestway-service.com

Switzerland

Tel: (+41) 071 929 00 00
Fax: (+41) 071 929 00 90
E-mail: switzerland@bestway-service.com

United Kingdom

Tel: 0800 612 0457
Fax: (+44) 1626 835736
E-mail: aftersales@bestway-uk.com
www.bestway-uk.com

Bestway Central & South America Ltda

Salar de Ascotan 1282, Parque Enea,
Pudahuel, Santiago, Chile
Tel: (+56) 2 365 0315
Fax: (+56) 2 365 0323
E-mail: info@bestway-southamerica.com

Brasil

Tel: (+55) 11 5641 2193
Tel / Fax: (+55) 11 3522 7405
E-mail: sac@bestway-brazil.com

Chile

Tel: (+56) 2 365 0315
E-mail: info@bestway-southamerica.com

Mexico

Tel: (+52) 81 8346 3416
Fax: (+52) 81 8346 6581
E-mail: mexico@bestway-southamerica.com

Perú

Tel: (+51) 1 254 1119
E-mail: peru@bestway-southamerica.com

Bestway Inflatables & Material Corp.

No.3065 Cao An Road, Shanghai, 201812,
China.
Tel: (+86) 21 6913 5588
Fax: (+86) 21 5913 8383
E-mail: info@bestway-shanghai.com

Bestway (Europe) s.r.l.

Via Resistenza 5,
20098 San Giuliano M.se (Mi) - Italy
Tel: (+39) 02 3626 5839
Fax: (+39) 02 9139 0361
E-mail: aftersales@bestway-europe.com
www.bestway-service.com

www.bestway-service.com